

GARDEN CITY, KANSAS

AL-491 (FAA)

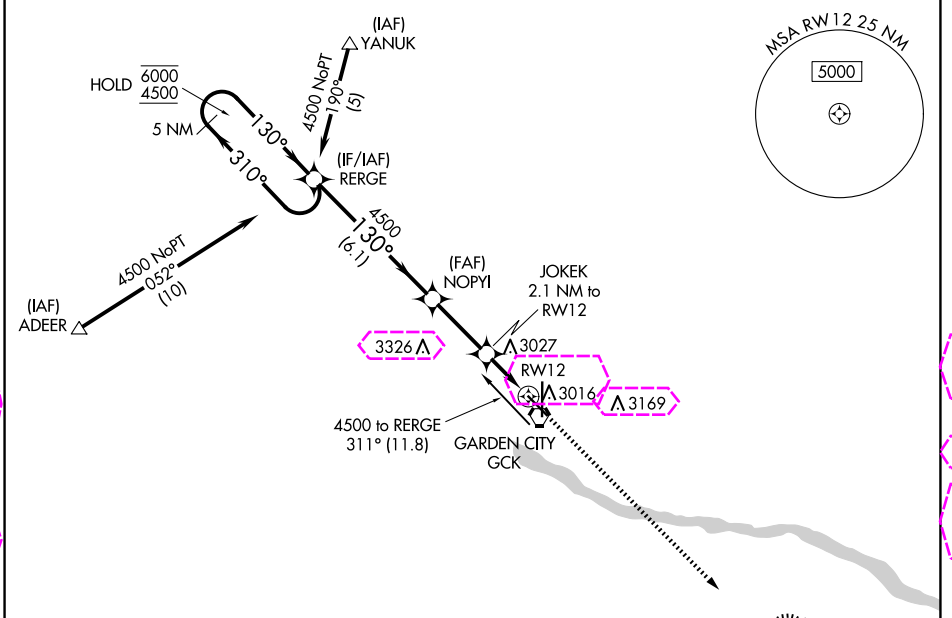
23110

WAAS CH 77803 W12A	APP CRS 130°	Rwy ldg 5700 TDZE 2891 Apt. Elev 2891
--	------------------------	--

RNAV (GPS) RWY 12

GARDEN CITY RGNL (GCK)

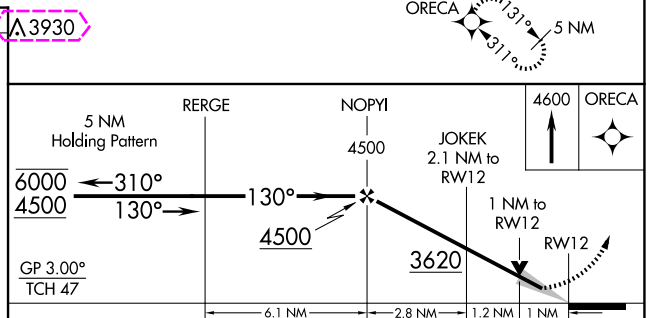
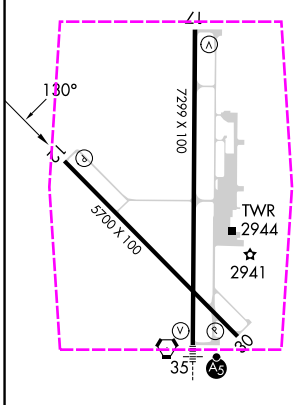
RNP APCH - GPS.		MISSED APPROACH: Climb to 4600 direct ORECA and hold.		
<p>▼ For uncompensated Baro-VNAV systems, procedure NA below -20°C or above 54°C.</p> <p>▲</p>				
ASOS 121,325	KANSAS CITY CENTER 125.2 285.425	GARDEN CITY TOWER* 118.15 (CTAF) 0 254.4	GND CON 119.0 254.4	UNICOM 122.95



NC-2 30 OCT 2025 to 27 NOV 2025

NC-2 30 OCT 2025 to 27 NOV 2025

ELEV 2891	D TDZE 2891	▲ 3930
-----------	-------------	--------



CATEGORY	A	B	C	D
LPV DA		3141-1	250 (300-1)	
LNAV/VNAV DA		3141-1	250 (300-1)	
LNAV MDA		3240-1	349 (400-1)	
CIRCLING	3320-1 429 (500-1)	3360-1 469 (500-1)	3480-1½ 589 (600-1½)	3480-2 589 (600-2)

REIL Rwy 12, 17 and 30
MIRL Rwy 12-30
HIRL Rwy 17-35

GARDEN CITY, KANSAS
Amdt 1 03NOV22

37°56'N-100°43'W

GARDEN CITY RGNL (GCK) RNAV (GPS) RWY 12

GARDEN CITY, KANSAS

AL-491 (FAA)

25331

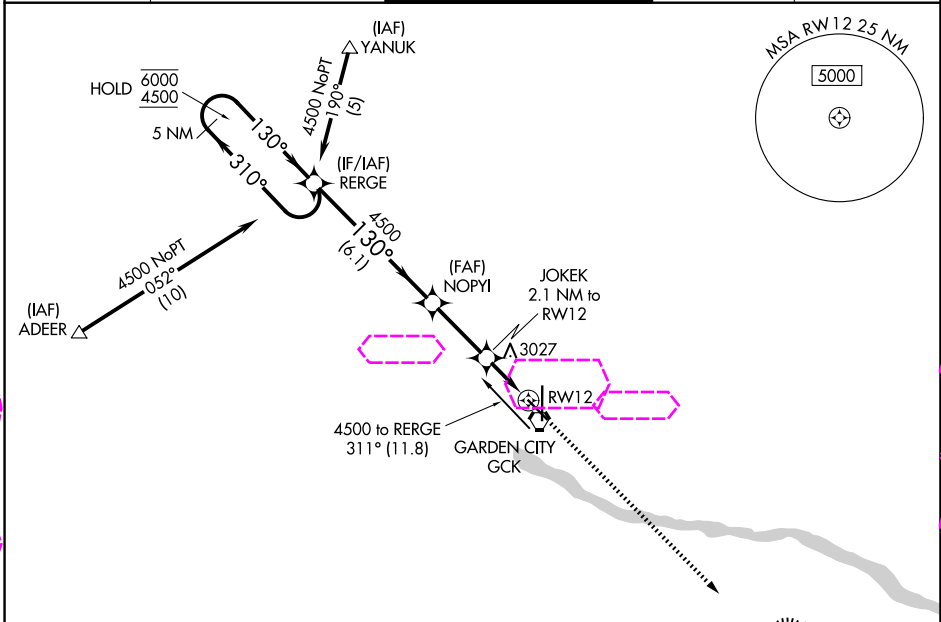
RNAV (GPS) RWY 12

GARDEN CITY RGNL (GCK)

WAAS CH 77803 W12A	APP CRS 130°	Rwy Ldg 5700
		TDZE 2891
		Apt. Elev 2891

RNP APCH - GPS.		MISSED APPROACH: Climb to 4600 direct ORECA and hold.		
<p>▼ For uncompensated Baro-VNAV systems, procedure NA below -20°C or above 54°C.</p> <p>▲</p>				

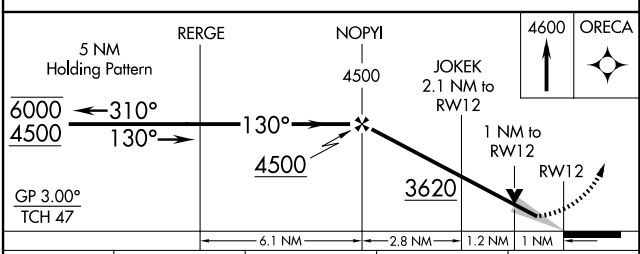
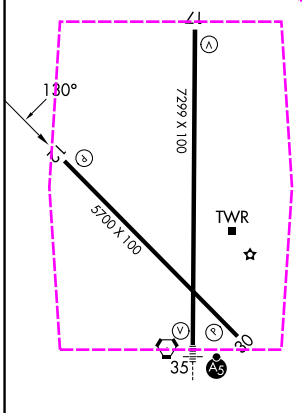
ASOS 121,325	KANSAS CITY CENTER 125.2 285.425	GARDEN CITY TOWER* 118.15 (CTAF) 0 254.4	GND CON 119.0 254.4	UNICOM 122.95
------------------------	--	--	-------------------------------	-------------------------



NC-2 27 NOV 2025 to 25 DEC 2025

NC-2 27 NOV 2025 to 25 DEC 2025

ELEV 2891	D	TDZE 2891
-----------	----------	-----------



CATEGORY	A	B	C	D
LPV DA		3141-1	250 (300-1)	
LNAV/VNAV DA		3141-1	250 (300-1)	
LNAV MDA		3240-1	349 (400-1)	
CIRCLING	3320-1 429 (500-1)	3360-1 469 (500-1)	3480-1½ 589 (600-1½)	3480-2 589 (600-2)

REIL Rwy 12, 17 and 30
MIRL Rwy 12-30
HIRL Rwy 17-35

GARDEN CITY, KANSAS
Amdt 1 03NOV22

37°56'N-100°43'W

GARDEN CITY RGNL (GCK) RNAV (GPS) RWY 12