

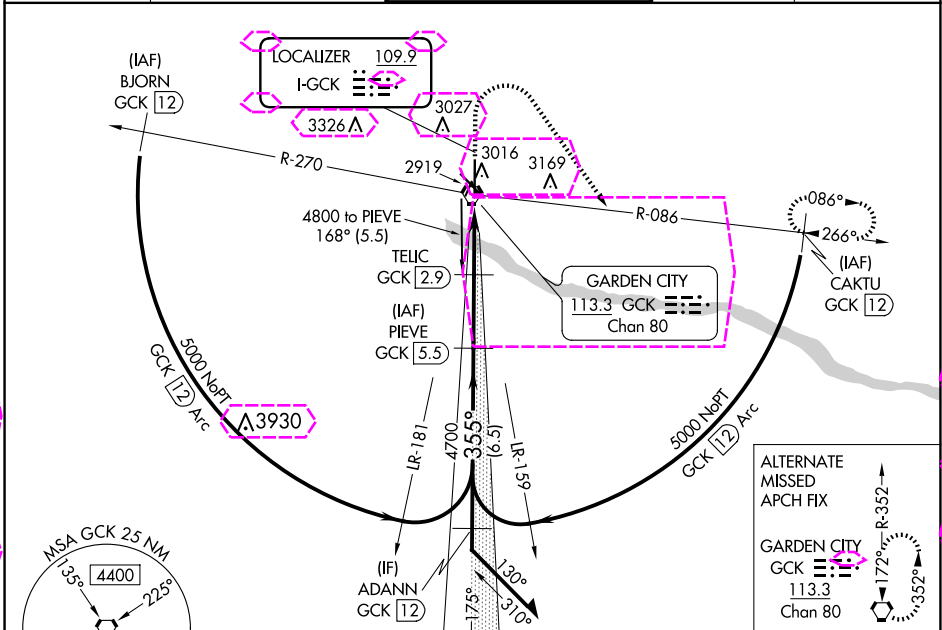
LOC I-GCK 109.9	APP CRS 355°	Rwy Idg 7299
		TDZE 2885
		App Elev 2891

ILS or LOC RWY 35

GARDEN CITY RGNL (GCK)

DME required.		MALSR	MISSED APPROACH: Climb to 4000 then climbing right turn to 5000 on GCK VORTAC R-086 to CAKTU/GCK VORTAC 12 DME and hold.
<p>▼ For inop ALS, increase S-LOC 35 Cats C/D visibility to 7/8 SM.</p> <p>▲</p>			

ASOS 121.325	KANSAS CITY CENTER 125.2 285.425	GARDEN CITY TOWER* 118.15 (CTAF) 0 254.4	GND CON 119.0 254.4	UNICOM 122.95
------------------------	--	--	-------------------------------	-------------------------



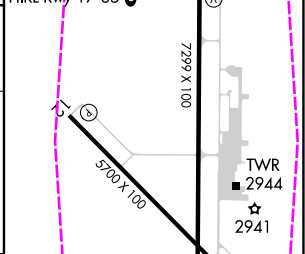
NC-2 30 OCT 2025 to 27 NOV 2025

NC-2 30 OCT 2025 to 27 NOV 2025



4800	4700	4000	5000	GCK R-086	CAKTU GCK 12
<p>VGSI and ILS glidepath not coincident (VGSI Angle 3.00/TCH 41). Remain within 10 NM</p>		<p>TELIC GCK 2.9</p> <p>GCK 0.8</p> <p>GCK 0.1</p>			
<p>GS 3.00° TCH 59</p>		<p>2.6 NM</p> <p>2.1 NM</p> <p>0.8</p>			

ELEV 2891	TDZE 2885
REIL Rwy 12, 17, and 30	
MIRL Rwy 12-30	
HIRL Rwy 17-35	



CATEGORY	A	B	C	D
S-ILS 35		3085-1/2	200 (200-1/2)	
S-LOC 35		3180-1/2	295 (300-1/2)	
CIRCLING	3320-1 429 (500-1)	3360-1 469 (500-1)	3480-1 1/2 589 (600-1 1/2)	3480-2 589 (600-2)

FAF to MAP 5.5 NM					
Knots	60	90	120	150	180
Min:Sec	5:30	3:40	2:45	2:12	1:50

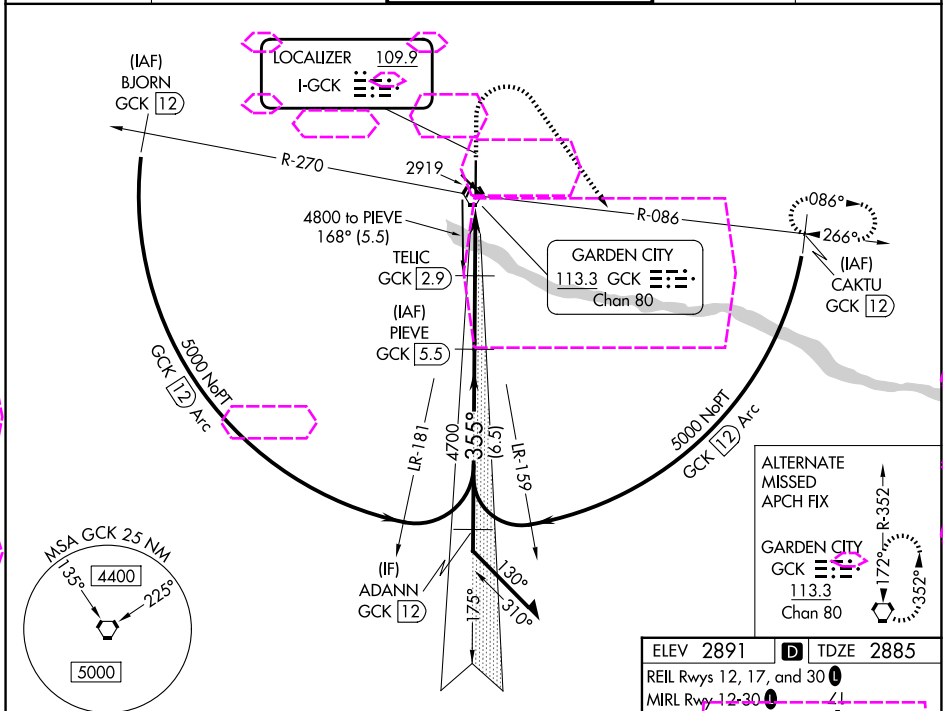
LOC I-GCK 109.9	APP CRS 355°	Rwy Ldg 7299	TDZE 2885
		TDZE 2885	App Elev 2891

ILS or LOC RWY 35

GARDEN CITY RGNL (GCK)

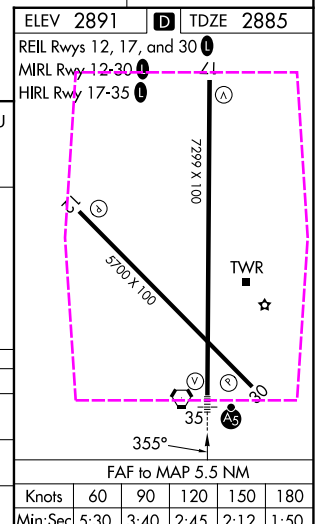
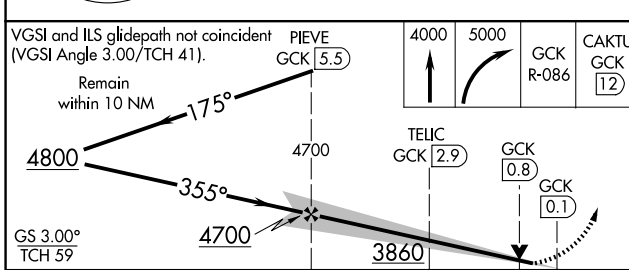
DME required.	MALSR	MISSED APPROACH: Climb to 4000 then climbing right turn to 5000 on GCK VORTAC R-086 to CAKTU/GCK VORTAC 12 DME and hold.
▼ For inop ALS, increase S-LOC 35 Cats C/D visibility to 7/8 SM.		

ASOS 121.325	KANSAS CITY CENTER 125.2 285.425	GARDEN CITY TOWER* 118.15 (CTAF) 0 254.4	GND CON 119.0 254.4	UNICOM 122.95
------------------------	--	--	-------------------------------	-------------------------



NC-2, 127 NOV 2025 to 25 DEC 2025

NC-2, 27 NOV 2025 to 25 DEC 2025



CATEGORY	A	B	C	D
S-ILS 35		3085-1/2	200 (200-1/2)	
S-LOC 35		3180-1/2	295 (300-1/2)	
CIRCLING	3320-1 429 (500-1)	3360-1 469 (500-1)	3480-1 1/2 589 (600-1 1/2)	3480-2 589 (600-2)