

PASCO, WASHINGTON

AL-474 (FAA)

25275

WAAS CH <b>86605</b> <b>W30A</b>	APP CRS <b>301°</b>	Rwy Ldg TDZE Apt Elev	<b>7504</b> <b>405</b> <b>410</b>
--	------------------------	-----------------------------	---

# RNAV (GPS) Y RWY 30

TRI-CITIES (PSC)

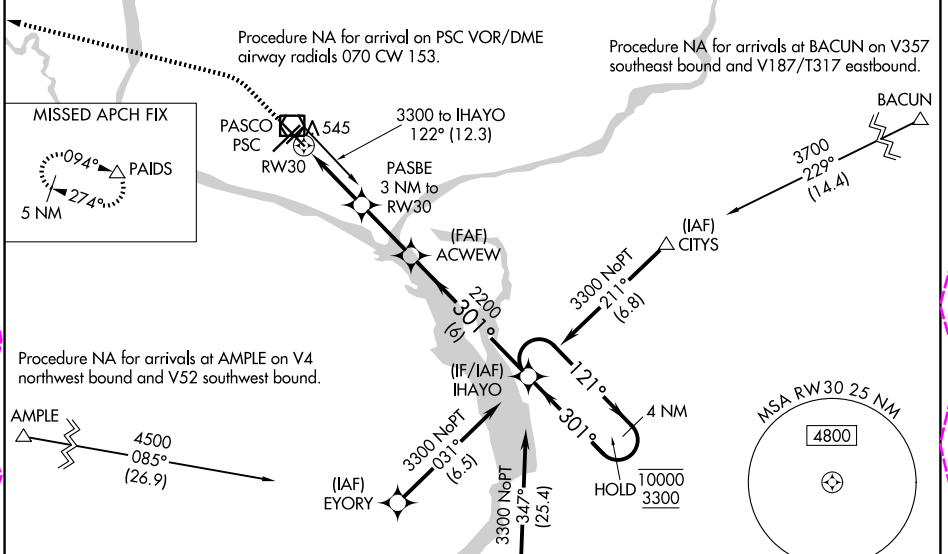
RNP APCH - GPS.

**⚠** Baro-VNAV and VDP NA when using HRI altimeter setting. Rwy 30 helicopter visibility reduction below 3/4 SM NA. For uncompensated Baro-VNAV systems, LNAV/VNAV NA below -14°C or above 54°C. When local altimeter setting not received, use HRI altimeter setting: increase LPV DA to 750 feet; increase LNAV/VNAV DA to 888 feet and all visibilities 1/4 SM, and increase all MDAs 100 feet and LNAV and Circling visibility Cats C and D 1/4 SM.

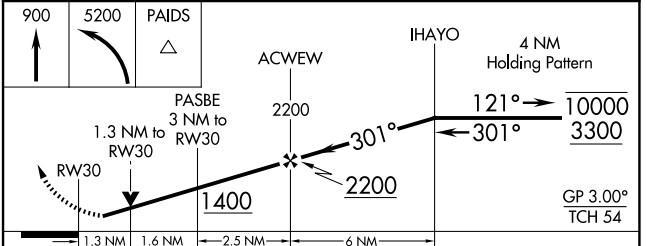
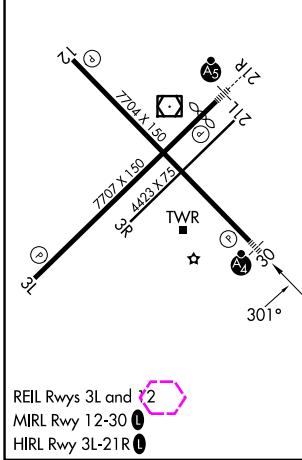
MALSF

MISSED APPROACH: Climb to 900 then climbing left turn to 5200 direct PAIDS and hold, continue climb-in-hold to 5200.

ATIS <b>125.65</b>	SPOKANE APP CON* <b>128.75 377.2</b>	TRI-CITIES TOWER* <b>135.3 (CTAF) 285.55</b>	GND CON <b>121.8</b>	UNICOM <b>122.95</b>
-----------------------	---	---	-------------------------	-------------------------



ELEV 410	<b>D</b>	TDZE 405
----------	----------	----------



CATEGORY	A	B	C	D
LPV DA		655-3/4	250 (300-3/4)	
LNAV/VNAV DA		793-7/8	388 (400-7/8)	
LNAV MDA	880-3/4	475 (500-3/4)	880-11/8	475 (500-11/8)
CIRCLING	900-1 490 (500-1)	940-1 530 (600-1)	1040-13/4 630 (700-13/4)	1100-21/4 690 (700-21/4)

PASCO, WASHINGTON  
Amdt 4 02OCT25

46°16'N-119°07'W

# RNAV (GPS) Y RWY 30

TRI-CITIES (PSC)

NW-1, 30 OCT 2025 to 27 NOV 2025

NW-1, 30 OCT 2025 to 27 NOV 2025

