

PASCO, WASHINGTON

AL-474 (FAA)

25275

WAAS CH 40303 W21A	APP CRS 211°	Rwy Ldg TDZE Apt Elev	7110 404 410
----------------------------------------	------------------------	-----------------------------	-----------------------------------------

RNAV (GPS) Y RWY 21R

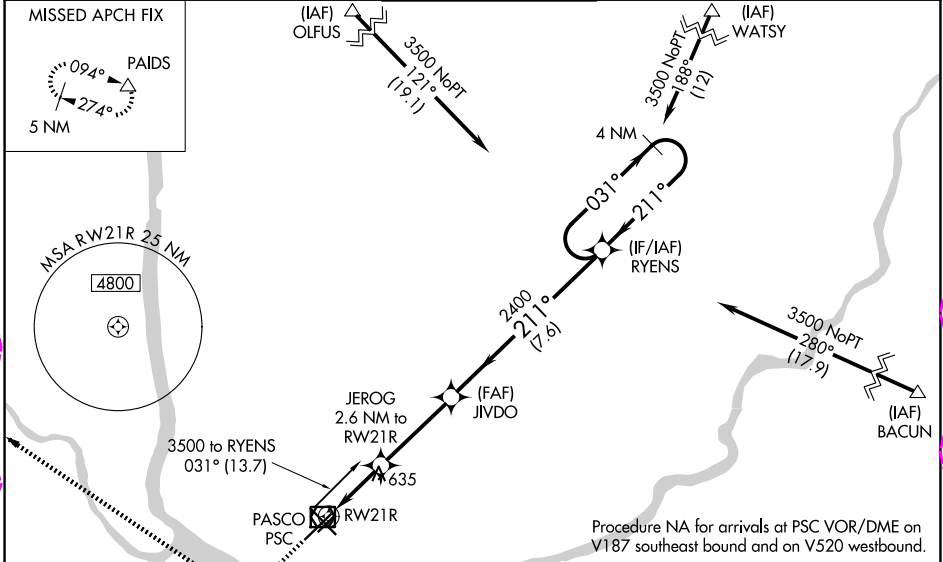
TRI-CITIES (PSC)

Baro-VNAV NA when using Hermiston altimeter setting. For uncompensated Baro-VNAV systems, LNAV/VNAV NA below -1.4°C (7°F) or above 54°C (130°F). DME/DME RNP-0.3 NA. VDP NA with Hermiston altimeter setting. When local altimeter setting not received, use Hermiston altimeter setting and increase all DA 95 feet and all MDA 100 feet; increase LNAV/VNAV all Cats visibility 3/8 mile; LNAV Cat C and D visibility 3/8 mile and Circling Cat C and D visibility 1/4 mile.
RVR 1800 authorized with use of FD or AP or HUD to DA, NA when using Hermiston altimeter setting.

MALSR

MISSED APPROACH:
Climb to 1100 then climbing right turn to 5200 direct PAIDS and hold, continue climb-in-hold to 5200.

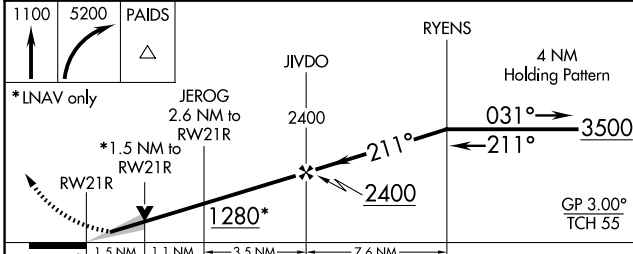
ATIS 125.65	SPOKANE APP CON * 128.75 377.2	TRI-CITIES TOWER * 135.3 (CTAF) 285.55	GND CON 121.8	UNICOM 122.95
------------------------------	-------------------------------------------------	---------------------------------------------------------	--------------------------------	--------------------------------



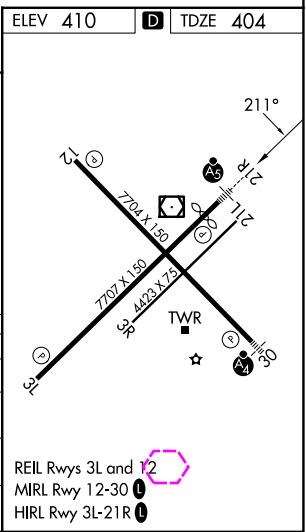
NW-1, 30 OCT 2025 to 27 NOV 2025

NW-1, 30 OCT 2025 to 27 NOV 2025

ELEV 410	D TDZE 404
----------	-------------------



CATEGORY	A	B	C	D
LPV DA#		604/24	200 (200-1/2)	
LNAV/VNAV DA		844/51	440 (500-1)	
LNAV MDA	940/24	536 (600-1/2)	940/55	536 (600-1)
CIRCLING	940-1	530 (600-1)	1040-1 3/4 630 (700-1 3/4)	1100-2 1/4 690 (700-2 1/4)



PASCO, WASHINGTON
Amdt 2B 07DEC17

46°16'N-119°07'W

RNAV (GPS) Y RWY 21R

TRI-CITIES (PSC)

PASCO, WASHINGTON

AL-474 (FAA)

25331

WAAS CH 40303 W21A	APP CRS 211°	Rwy Ldg TDZE Apt Elev	7110 404 410
----------------------------------------	------------------------	-----------------------------	-----------------------------------------

RNAV (GPS) Y RWY 21R

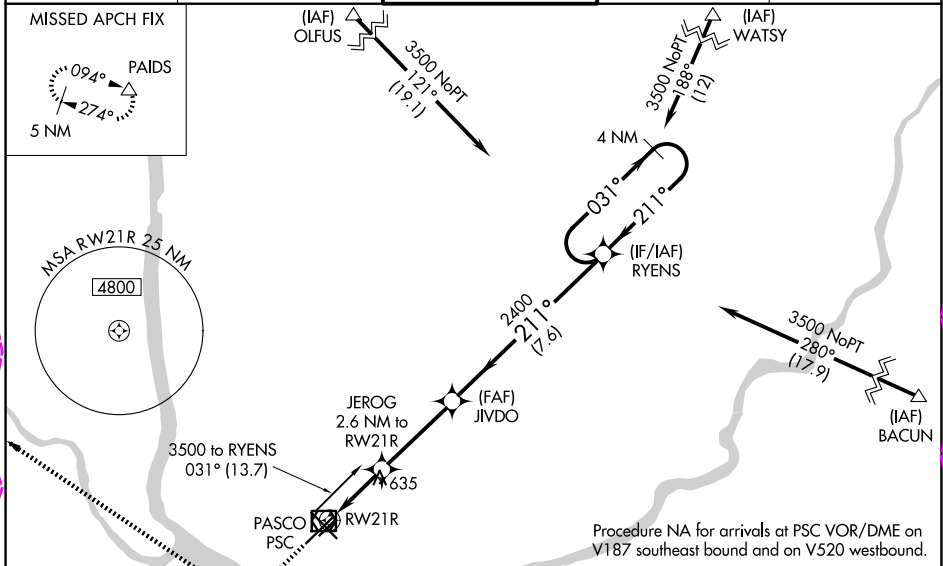
TRI-CITIES (PSC)

⚠ Baro-VNAV NA when using Hermiston altimeter setting. For uncompensated Baro-VNAV systems, LNAV/VNAV NA below -1.4°C (7°F) or above 54°C (130°F). DME/DME RNP-0.3 NA. VDP NA with Hermiston altimeter setting. When local altimeter setting not received, use Hermiston altimeter setting and increase all DA 95 feet and all MDA 100 feet; increase LNAV/VNAV all Cats visibility 3/8 mile; LNAV Cat C and D visibility 3/8 mile and Circling Cat C and D visibility 1/4 mile.
RVR 1800 authorized with use of FD or AP or HUD to DA, NA when using Hermiston altimeter setting.

MALSR

MISSED APPROACH:
Climb to 1100 then climbing right turn to 5200 direct PAIDS and hold, continue climb-in-hold to 5200.

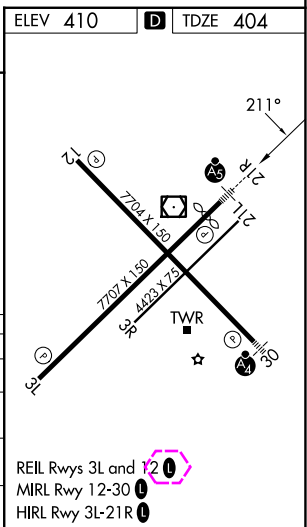
ATIS 125.65	SPOKANE APP CON * 128.75 377.2	TRI-CITIES TOWER * 135.3 (CTAF) 285.55	GND CON 121.8	UNICOM 122.95
-----------------------	------------------------------------------	--------------------------------------------------	-------------------------	-------------------------



NW-1, 127 NOV 2025 to 25 DEC 2025

NW-1, 127 NOV 2025 to 25 DEC 2025

ELEV 410		D TDZE 404	
1100	5200	PAIDS	
*LNAV only			
RW21R		JEROG 2.6 NM to RW21R	JIVDO 2400
1.5 NM		1.1 NM	3.5 NM
1280*		7.6 NM	
RW21R		RYENS 4 NM Holding Pattern	
211°		031° 3500	
211°		GP 3.00° TCH 55	
CATEGORY	A	B	C
LPV DA#		604/24	200 (200-1/2)
LNAV/VNAV DA		844/51	440 (500-1)
LNAV MDA	940/24	536 (600-1/2)	940/55 536 (600-1)
CIRCLING	940-1	530 (600-1)	1040-1 3/4 630 (700-1 3/4) 1100-2 1/4 690 (700-2 1/4)



PASCO, WASHINGTON
Amdt 2B 07DEC17

46°16'N-119°07'W

RNAV (GPS) Y RWY 21R

TRI-CITIES (PSC)