

PASCO, WASHINGTON

AL-474 (FAA)

25275

WAAS CH 58006 W12A	APP CRS 121°	Rwy Ldg TDZE Apt Elev	7504 401 410
---------------------------------	------------------------	-----------------------------	---

RNAV (GPS) Y RWY 12

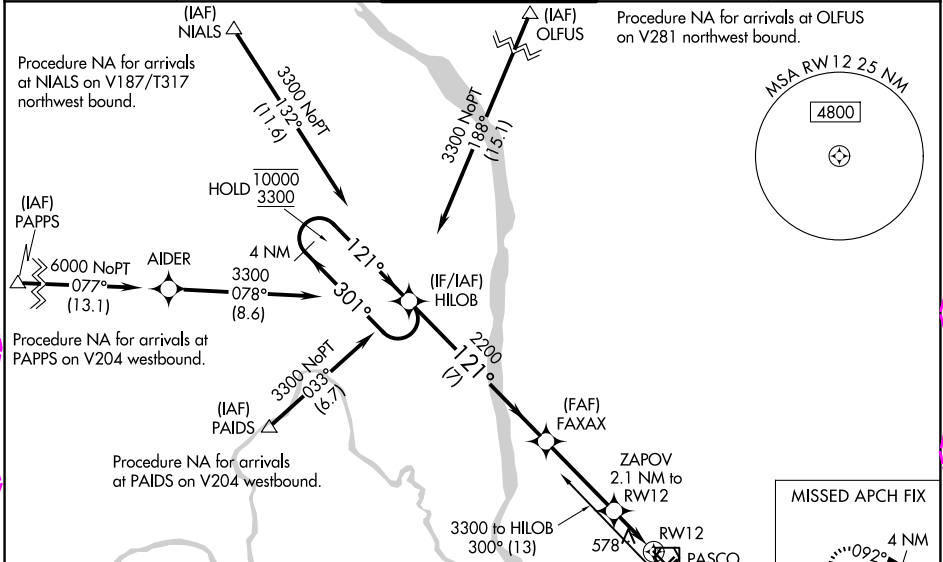
TRI-CITIES (PSC)

RNP APCH - GPS.

⚠ For uncompensated Baro-VNAV systems, LNAV/VNAV NA below -14°C or above 54°C. Rwy 12 helicopter visibility reduction below 3/4 SM NA. Baro-VNAV and VDP NA when using HRI altimeter setting. When local altimeter setting not received, use HRI altimeter setting: increase LPV DA to 696 feet and all visibilities 1/8 SM, and increase LNAV/VNAV DA to 935 feet and all visibilities 1/4 SM. Increase all MDAs 100 feet and LNAV and Circling Cats C and D visibility 1/4 SM.

MISSED APPROACH: Climb to 900 then climbing left turn to 3200 direct CITYS and hold.

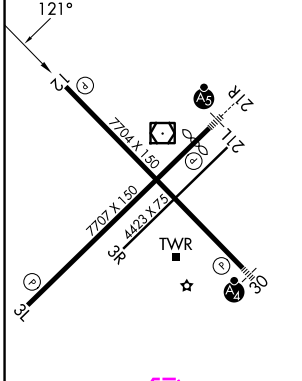
ATIS 125.65	SPOKANE APP CON * 128.75 377.2	TRI-CITIES TOWER * 135.3 (CTAF) 285.55	GND CON 121.8	UNICOM 122.95
-----------------------	--	--	-------------------------	-------------------------



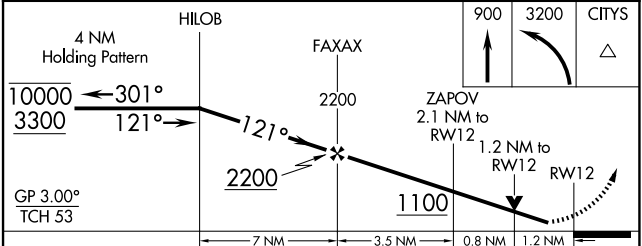
NW-1, 30 OCT 2025 to 27 NOV 2025

NW-1, 30 OCT 2025 to 27 NOV 2025

ELEV 410	D	TDZE 401
----------	----------	----------



Procedure NA for arrival on PSC VOR/DME airway radials 234 CW 020.



CATEGORY	A	B	C	D
LPV DA		601-3/4	200 (200-3/4)	
LNAV/VNAV DA		840-1 1/4	439 (500-1 1/4)	
LNAV MDA	840-1	439 (500-1)	840-1 1/4	439 (500-1 1/4)
CIRCLING	900-1	940-1	1040-1 3/4	1100-2 1/4
	490 (500-1)	530 (600-1)	630 (700-1 3/4)	690 (700-2 1/4)

REIL Rwy 3L and 12
MIRL Rwy 12-30
HIRL Rwy 3L-21R

PASCO, WASHINGTON
Amdt 3 02OCT25

46°16'N-119°07'W

TRI-CITIES (PSC)

RNAV (GPS) Y RWY 12

PASCO, WASHINGTON

AL-474 (FAA)

25331

WAAS CH 58006 W12A	APP CRS 121°	Rwy Ldg TDZE Apt Elev	7704 401 410
---------------------------------	------------------------	-----------------------------	---

RNAV (GPS) Y RWY 12

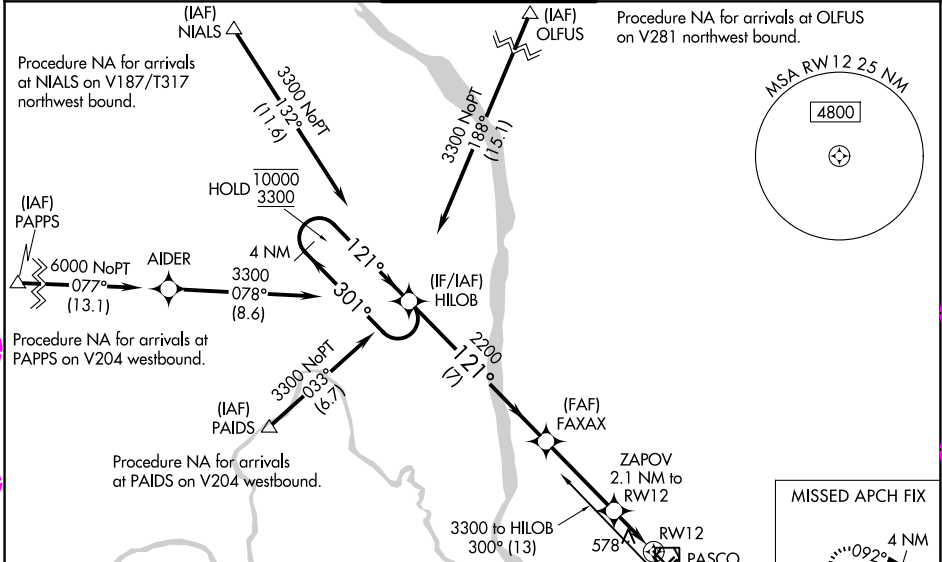
TRI-CITIES (PSC)

RNP APCH - GPS.

⚠ For uncompensated Baro-VNAV systems, LNAV/VNAV NA below -14°C or above 54°C. Rwy 12 helicopter visibility reduction below 3/4 SM NA. Baro-VNAV and VDP NA when using HRI altimeter setting. When local altimeter setting not received, use HRI altimeter setting: increase LPV DA to 696 feet and all visibilities 1/8 SM, and increase LNAV/VNAV DA to 935 feet and all visibilities 1/4 SM. Increase all MDAs 100 feet and LNAV and Circling Cats C and D visibility 1/4 SM.

MISSED APPROACH: Climb to 900 then climbing left turn to 3200 direct CITYS and hold.

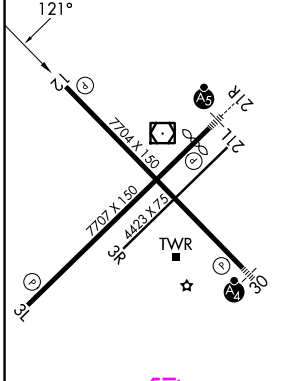
ATIS 125.65	SPOKANE APP CON * 128.75 377.2	TRI-CITIES TOWER * 135.3 (CTAF) 285.55	GND CON 121.8	UNICOM 122.95
-----------------------	--	--	-------------------------	-------------------------



NW-1, 127 NOV 2025 to 25 DEC 2025

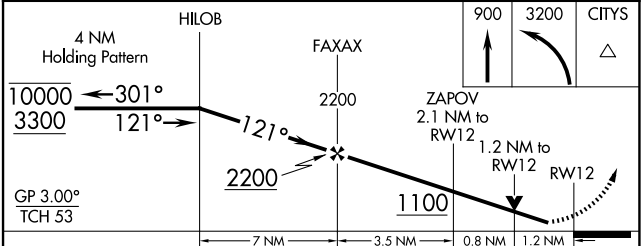
NW-1, 127 NOV 2025 to 25 DEC 2025

ELEV 410	D	TDZE 401
----------	----------	----------



REIL Rwys 3L and 12 **1**
MIRL Rwy 12-30 **1**
HIRL Rwy 3L-21R **1**

Procedure NA for arrival on PSC VOR/DME airway radials 234 CW 020.



CATEGORY	A	B	C	D
LPV DA		601-3/4	200 (200-3/4)	
LNAV/VNAV DA		840-1 1/4	439 (500-1 1/4)	
LNAV MDA	840-1	439 (500-1)	840-1 1/4	439 (500-1 1/4)
CIRCLING	900-1	940-1	1040-1 3/4	1100-2 1/4
	490 (500-1)	530 (600-1)	630 (700-1 3/4)	690 (700-2 1/4)

PASCO, WASHINGTON
Amdt 3 02OCT25

46°16'N-119°07'W

TRI-CITIES (PSC)

RNAV (GPS) Y RWY 12