

# RNAV (RNP) Z RWY 3L

TRI-CITIES (PSC)

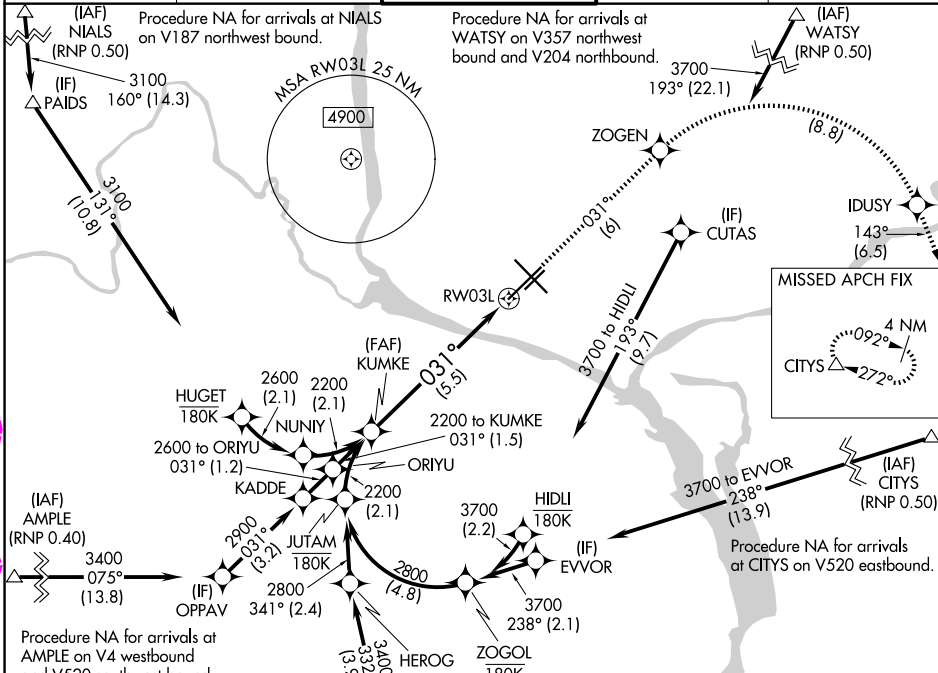
APP CRS <b>031°</b>	Rwy Ldg TDZE Apt Elev	<b>7707</b> <b>410</b> <b>410</b>
------------------------	-----------------------------	---

RNP AR APCH. RF required.

▼ For uncompensated Baro-VNAV systems, procedure NA below -14°C or above 54°C.

MISSED APPROACH: Climb to 3200 on track 031° to ZOGEN, right turn to IDUSY, and on track 143° to CITYS and hold.

ATIS <b>125.65</b>	SPOKANE APP CON * <b>128.75 377.2</b>	TRI-CITIES TOWER * <b>135.3 (CTAF) 285.55</b>	GND CON <b>121.8</b>	UNICOM <b>122.95</b>
-----------------------	--	--	-------------------------	-------------------------

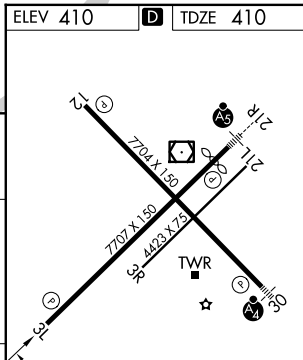
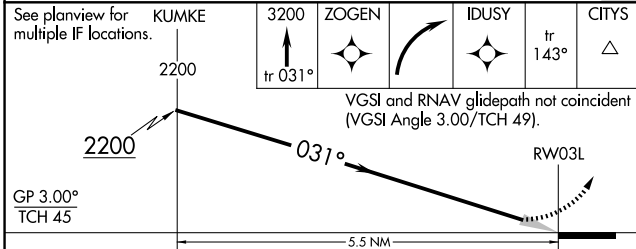


NW-1, 30 OCT 2025 to 27 NOV 2025

NW-1, 30 OCT 2025 to 27 NOV 2025



ELEV 410	D	TDZE 410
----------	---	----------



CATEGORY	A	B	C	D
RNP 0.11 DA		729-1	319 (400-1)	
RNP 0.30 DA		849-1½	439 (500-1½)	

## AUTHORIZATION REQUIRED

REIL Rwy 3L and T2

MIRL Rwy 12-30

HIRL Rwy 3L-21R

PASCO, WASHINGTON

# RNAV (RNP) Z RWY 3L

TRI-CITIES (PSC)

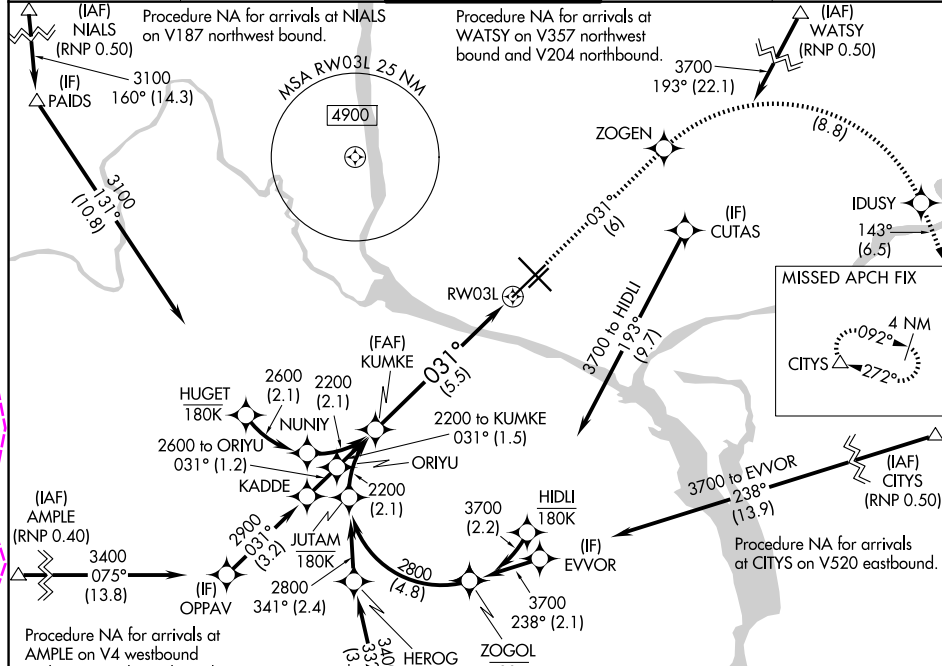
APP CRS	Rwy Ldg	<b>7707</b>
<b>031°</b>	TDZE	<b>410</b>
	Apt Elev	<b>410</b>

RNP AR APCH. RF required.

▼ For uncompensated Baro-VNAV systems, procedure NA below -14°C or above 54°C.

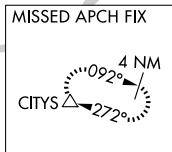
MISSED APPROACH: Climb to 3200 on track 031° to ZOGEN, right turn to IDUSY, and on track 143° to CITYS and hold.

ATIS <b>125.65</b>	SPOKANE APP CON * <b>128.75 377.2</b>	TRI-CITIES TOWER * <b>135.3 (CTAF) 285.55</b>	GND CON <b>121.8</b>	UNICOM <b>122.95</b>
-----------------------	--	--	-------------------------	-------------------------



NW-1, 127 NOV 2025 to 25 DEC 2025

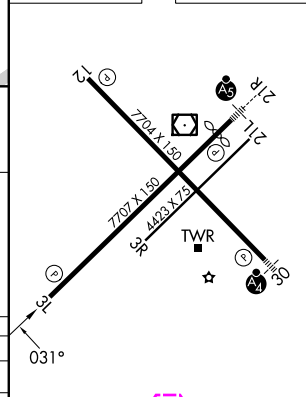
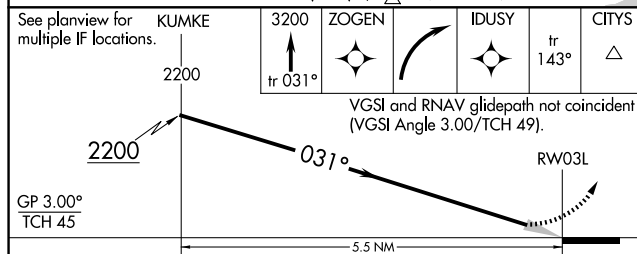
NW-1, 127 NOV 2025 to 25 DEC 2025



Procedure NA for arrivals at AMPLE on V4 westbound and V520 southwest bound.

Procedure NA for arrivals at CORDO on V4 eastbound.

ELEV 410	D	TDZE 410
----------	---	----------



CATEGORY	A	B	C	D
RNP 0.11 DA		729-1	319 (400-1)	
RNP 0.30 DA		849-1½	439 (500-1½)	

## AUTHORIZATION REQUIRED

- REIL Rwy 3L and T2
- MIRL Rwy 12-30
- HIRL Rwy 3L-21R