

PASCO, WASHINGTON

AL-474 (FAA)

25275

RNAV (RNP) Z RWY 21R

TRI-CITIES (PSC)

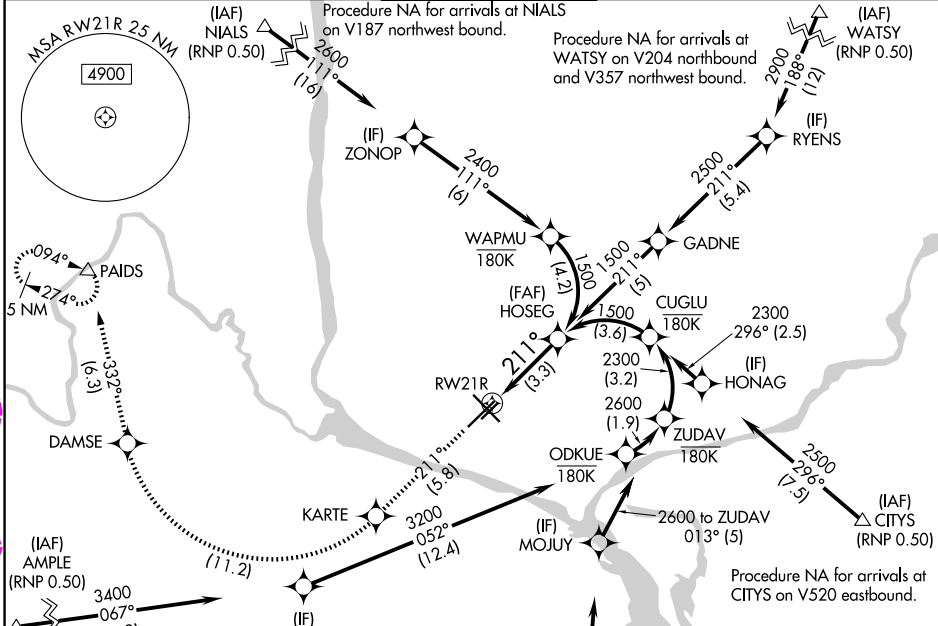
APP CRS	Rwy Ldg	7110
211°	TDZE	404
	Apt Elev	410

For uncompensated Baro-VNAV systems, procedure NA below -14°C (7°F) or above 54°C (130°F). GPS required. RF required. For inoperative MALSR, increase RNP 0.11 all Cats visibility to RVR 5700 and RNP 0.30 all Cats visibility to 1 3/8 mile.

MALSR

MISSED APPROACH: Climb to 5200 on track 211° to KARTE, right turn to DAMSE, and on track 332° to PAIDS and hold.

ATIS 125.65	SPOKANE APP CON * 128.75 377.2	TRI-CITIES TOWER * 135.3 (CTAF) 0 285.55	GND CON 121.8	UNICOM 122.95
-----------------------	--	--	-------------------------	-------------------------



NW-1, 30 OCT 2025 to 27 NOV 2025

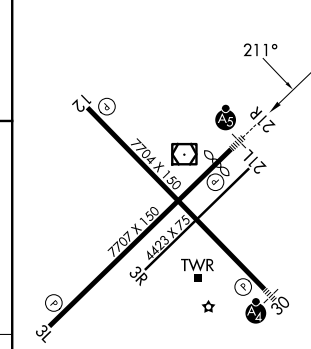
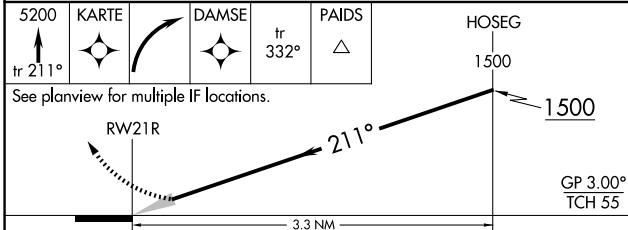
NW-1, 30 OCT 2025 to 27 NOV 2025

ELEV 410	D	TDZE 404
----------	----------	----------

Procedure NA for arrivals at AMPL on V4 westbound and V520 southwest bound.

Procedure NA for arrivals at GINLE on V298 southeast bound.

(IAF) GINLE (RNP 0.50)



CATEGORY	A	B	C	D
RNP 0.11 DA		754/33	350 (400-5/8)	
RNP 0.30 DA		832/48	428 (500-1)	

AUTHORIZATION REQUIRED

REIL Rwy 3L and Y2
 MIRL Rwy 12-30
 HIRL Rwy 3L-21R

PASCO, WASHINGTON
Amdt 1 13NOV14

46°16'N-119°07'W

RNAV (RNP) Z RWY 21R

TRI-CITIES (PSC)

APP CRS	Rwy Ldg	7110
211°	TDZE	404
	Apt Elev	410

RNAV (RNP) Z RWY 21R

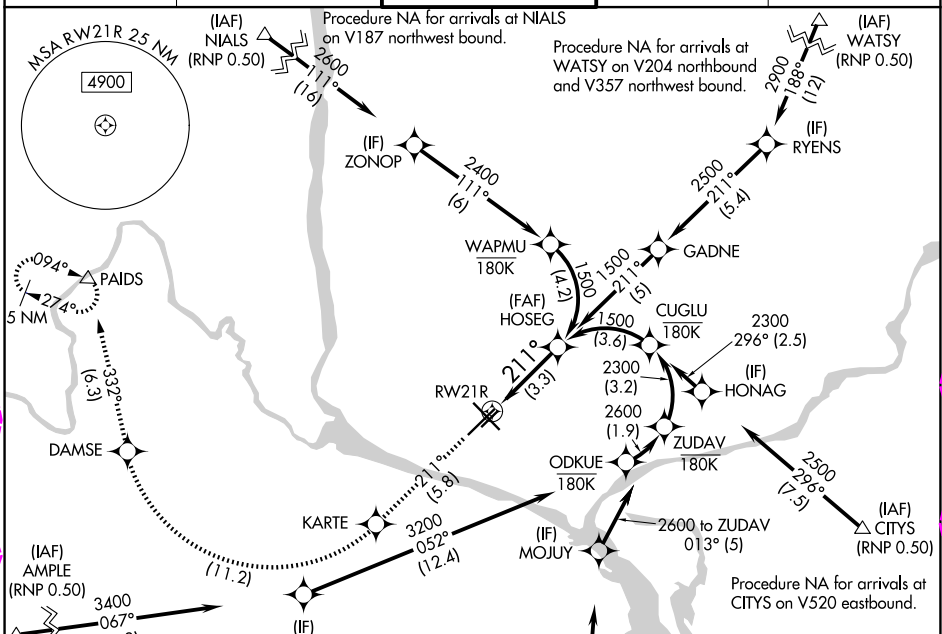
TRI-CITIES (PSC)

For uncompensated Baro-VNAV systems, procedure NA below -14°C (7°F) or above 54°C (130°F). GPS required. RF required. For inoperative MALSR, increase RNP 0.11 all Cats visibility to RVR 5700 and RNP 0.30 all Cats visibility to 1 3/8 mile.



MISSED APPROACH: Climb to 5200 on track 211° to KARTE, right turn to DAMSE, and on track 332° to PAIDS and hold.

ATIS 125.65	SPOKANE APP CON * 128.75 377.2	TRI-CITIES TOWER * 135.3 (CTAF) 0 285.55	GND CON 121.8	UNICOM 122.95
-----------------------	--	--	-------------------------	-------------------------



NW-1, 127 NOV 2025 to 25 DEC 2025

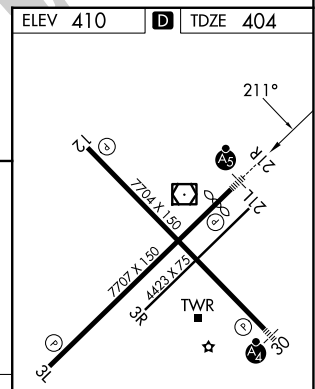
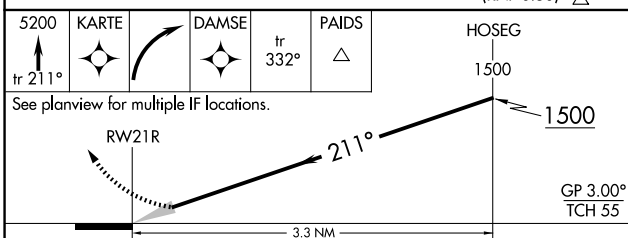
NW-1, 127 NOV 2025 to 25 DEC 2025

ELEV 410 TDZE 404

Procedure NA for arrivals at AMPL on V4 westbound and V520 southwest bound.

Procedure NA for arrivals at KADDE on V211 southeast bound.

Procedure NA for arrivals at GINLE on V298 southeast bound.



CATEGORY	A	B	C	D
RNP 0.11 DA		754/33	350 (400-5/8)	
RNP 0.30 DA		832/48	428 (500-1)	

AUTHORIZATION REQUIRED

REIL Rwy 3L and 12
MIRL Rwy 12-30
HIRL Rwy 3L-21R