

PASCO, WASHINGTON

AL-474 (FAA)

25331


LOC/DME I-PSC 108.7 Chan 24	APP CRS 211°	Rwy Ldg TDZE Apt Elev	7110 403 410
--	------------------------	-----------------------------	---

ILS or LOC RWY 21R

TRI-CITIES (PSC)

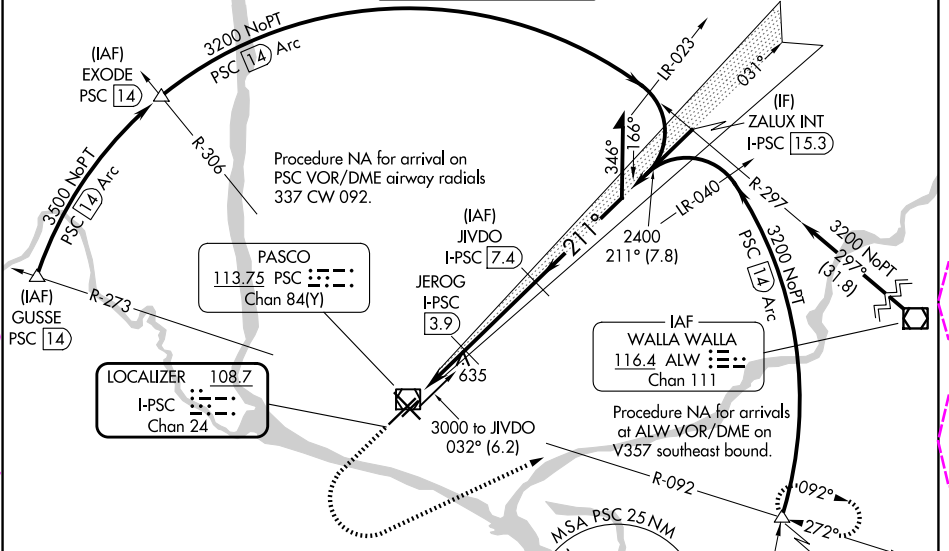
DME required for LOC only.
DME required for procedure entry at GUSSE, EXODE, CITYS, PSC VOR/DME.

▼ VDP NA when using Hermiston altimeter setting. For inop ALS when using Hermiston altimeter setting, increase S-ILS 21R all Cats visibility to RVR 4500, increase S-LOC 21R Cats C and D visibility to 1¼ SM. When local altimeter setting not received, use Hermiston altimeter setting: increase DA to 698 feet and all MDAs 100 feet; increase S-LOC 21R Cat C and D visibility ¾ SM and Circling Cat C and D visibility ¼ SM. *RVR 1800 authorized with use of FD or AP or HUD to DA (NA when using Hermiston altimeter setting).

MALSR 

MISSED APPROACH:
Climb to 1200 then
Climbing left turn to 3200
on heading 050° and
PSC VOR/DME R-092 to
CITYS INT/PSC VOR/DME
1.4 DME and hold.

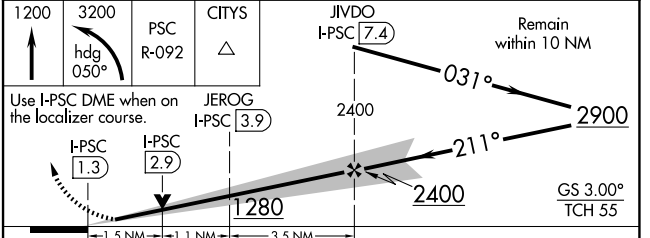
ATIS 125.65	SPOKANE APP CON * 128.75 377.2	TRI-CITIES TOWER * 135.3 (CTAF) 285.55	GND CON 121.8	UNICOM 122.95
-----------------------	--	--	-------------------------	-------------------------



NW-1, 127 NOV 2025 to 25 DEC 2025

NW-1, 127 NOV 2025 to 25 DEC 2025

ELEV 410	D	TDZE 403
----------	----------	----------



CATEGORY	A	B	C	D
S-ILS 21R*	603/24 200 (200-½)			
S-LOC 21R	940/24	537 (600-½)	940/55	537 (600-1)
CIRCLING	940-1	530 (600-1)	1040-1¾ 630 (700-1¾)	1100-2¼ 690 (700-2¼)

PASCO, WASHINGTON
Amdt 13C 08SEP22

46°16'N-119°07'W

TRI-CITIES (PSC)

ILS or LOC RWY 21R

NW-1, 127 NOV 2025 to 25 DEC 2025

NW-1, 127 NOV 2025 to 25 DEC 2025