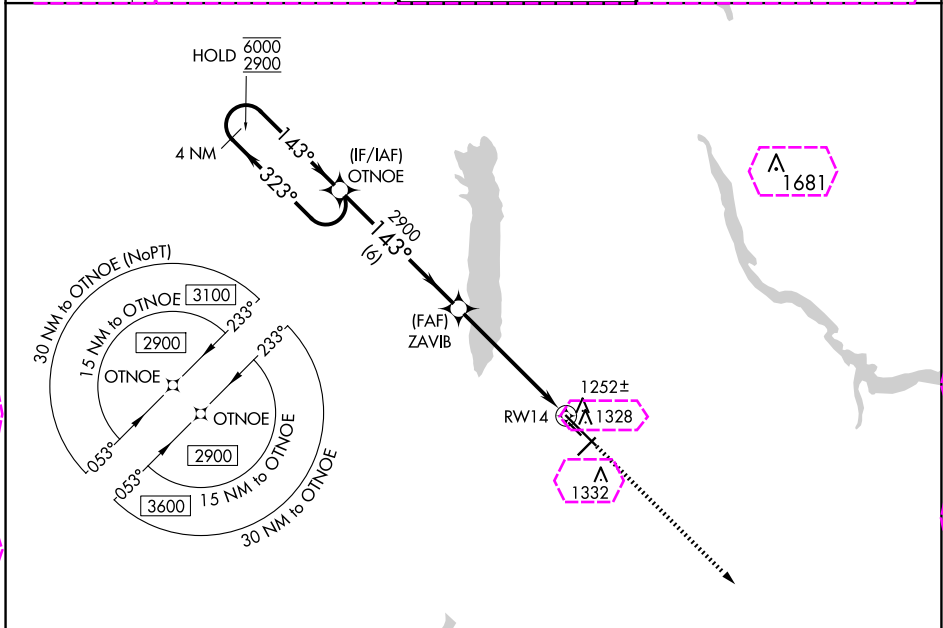


WAAS CH 49205 W14A	APP CRS 143°	Rwy Idg 9003 TDZE 1134 Apt Elev 1192
--------------------------	-----------------	--

# RNAV (GPS) RWY 14

YOUNGSTOWN/WARREN RGNL (YNG)

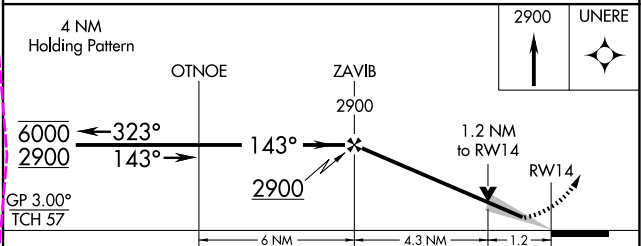
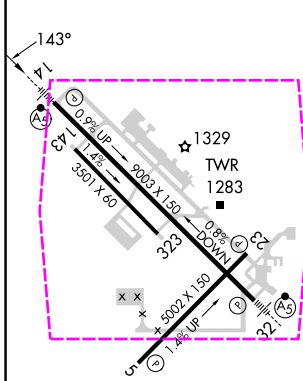
RNP APCH - GPS.		MALSR	MISSED APPROACH: Climb to 2900 direct UNERE and hold.	
For uncompensated Baro-VNAV systems, LNAV/VNAV NA below -18°C or above 54°C. Circling Rwy 5 and 23 NA at night. For inop ALS, increase LNAV/VNAV all Cats visibility to ½ SM.				
ATIS 123.75	YOUNGSTOWN APP CON * 133.95 322.3	YOUNGSTOWN TOWER 119.5 263.0	GND CON 121.9 275.8	CLNC DEL 118.25



EC-2, 30 OCT 2025 to 27 NOV 2025

EC-2, 30 OCT 2025 to 27 NOV 2025

ELEV 1192	<b>D</b>	TDZE 1134
-----------	----------	-----------



GP 3.00° TCH 57				
CATEGORY	A	B	C	D
LPV DA		1334-½	200 (200-½)	
LNAV/VNAV DA		1421-½	287 (300-½)	
LNAV MDA	1540-½	406 (400-½)	1540-⅝	406 (400-⅝)
<b>CIRCLING</b>	1640-1 448 (500-1)	1660-1 468 (500-1)	1740-1½ 548 (600-1½)	1760-2 568 (600-2)

HIRL Rwy 14-32  
MIRL Rwy 5-23  
REIL Rwy 5 and 23

YOUNGSTOWN/WARREN, OHIO  
Amdt 1 05SEP24

YOUNGSTOWN/WARREN RGNL (YNG)  
RNAV (GPS) RWY 14

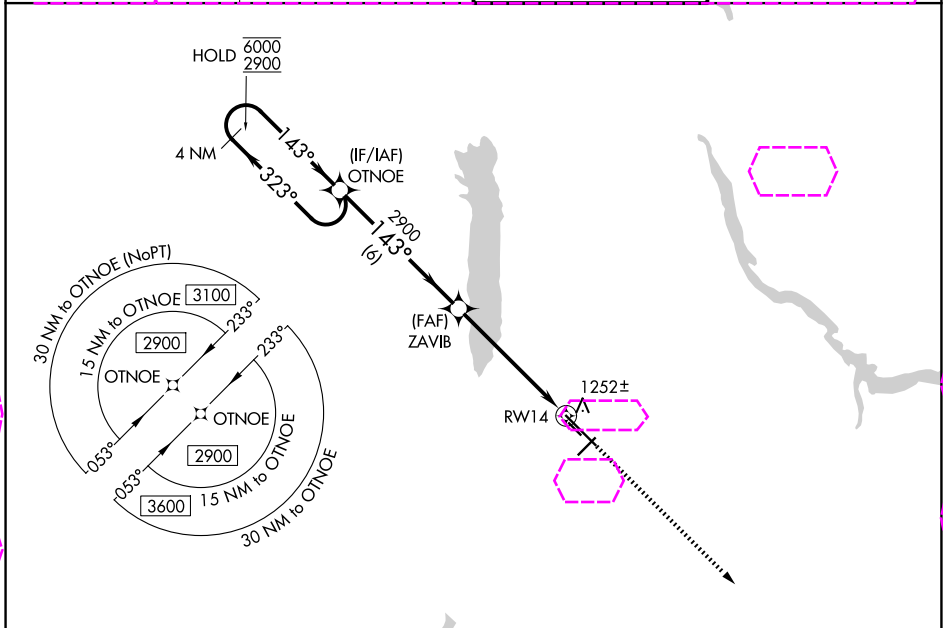
41°16'N-80°41'W

WAAS CH <b>49205</b> <b>W14A</b>	APP CRS <b>143°</b>	Rwy Ldg <b>9003</b> TDZE <b>1134</b> Apt Elev <b>1192</b>
--	------------------------	---

# RNAV (GPS) RWY 14

YOUNGSTOWN/WARREN RGNL (YNG)

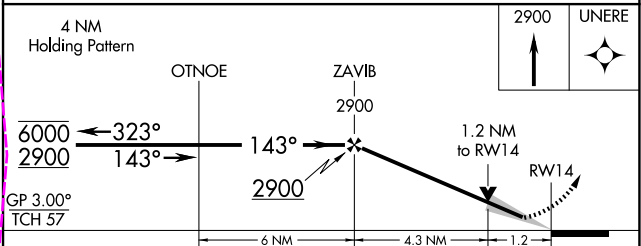
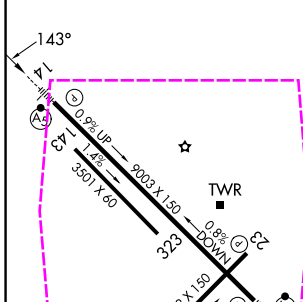
RNP APCH - GPS.		MALSR	MISSED APPROACH: Climb to 2900 direct UNERE and hold.
⚠ For uncompensated Baro-VNAV systems, LNAV/VNAV NA below -18°C or above 54°C. Circling Rwy 5 and 23 NA at night. For inop ALS, increase LNAV/VNAV all Cats visibility to ½ SM.			
ATIS <b>123.75</b>	YOUNGSTOWN APP CON * <b>133.95 322.3</b>	YOUNGSTOWN TOWER <b>119.5 263.0</b>	GND CON <b>121.9 275.8</b>



EC-2, 127 NOV 2025 to 25 DEC 2025

EC-2, 27 NOV 2025 to 25 DEC 2025

ELEV 1192	<b>D</b>	TDZE 1134
-----------	----------	-----------



CATEGORY	A	B	C	D
LPV DA		1334-½	200 (200-½)	
LNAV/VNAV DA		1421-½	287 (300-½)	
LNAV MDA	1540-½	406 (400-½)	1540-⅝	406 (400-⅝)
<b>CIRCLING</b>	1640-1 448 (500-1)	1660-1 468 (500-1)	1740-1½ 548 (600-1½)	1760-2 568 (600-2)

HIRL Rwy 14-32  
MIRL Rwy 5-23  
REIL Rwy 5 and 23