

WATERTOWN, SOUTH DAKOTA

AL-444 (FAA)

23222

LOC/DME I-ATY 111.9 Chan 56	APP CRS 354°	Rwy Idg 6893 TDZE 1745 Apt Elev 1749
---	------------------------	---

ILS or LOC RWY 35

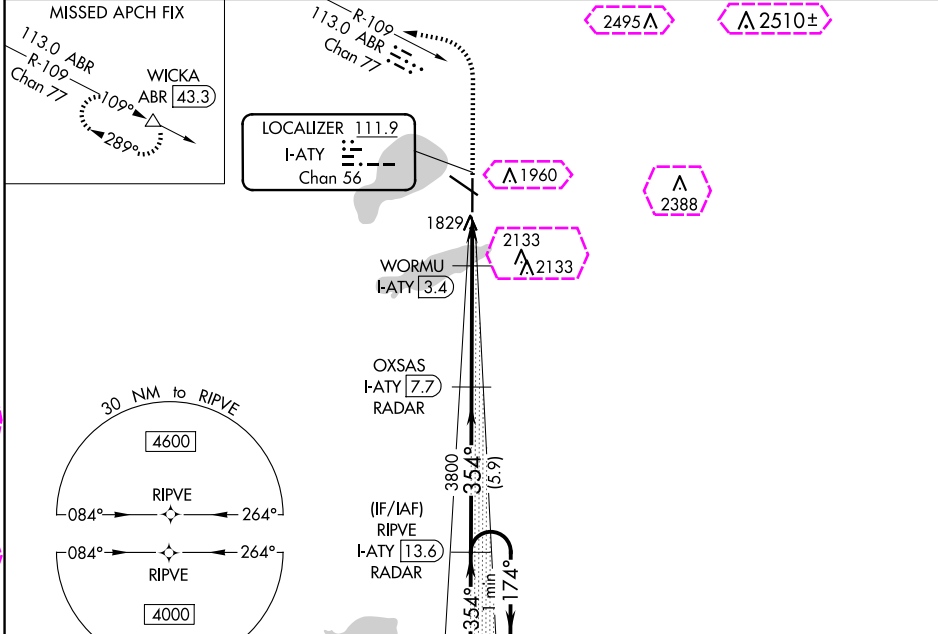
WATERTOWN RGNL (ATY)

RNAV 1-GPS or RADAR required for procedure entry. DME required.

MALSR

MISSED APPROACH: Climb to 3600 then climbing left turn to 4500 on heading 275° and ABR R-109 to WICKA/ABR 43.3 DME and hold.

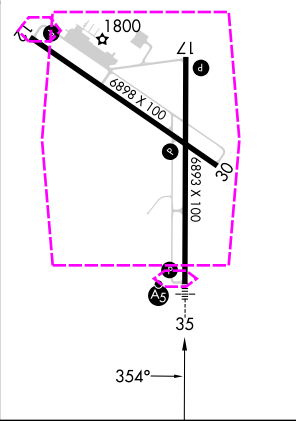
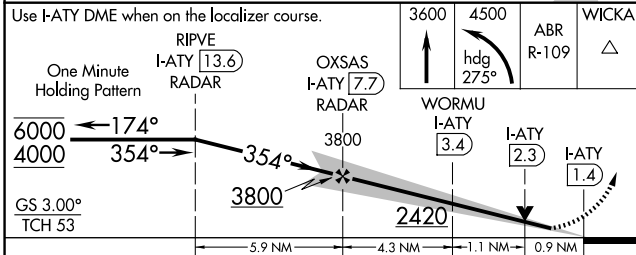
ASOS 126.625	MINNEAPOLIS CENTER 128.5 306.2	UNICOM 123.05 (CTAF)
------------------------	--	--------------------------------



NC-1, 30 OCT 2025 to 27 NOV 2025

NC-1, 30 OCT 2025 to 27 NOV 2025

ELEV 1749	TDZE 1745
REIL Rwy 12, 17 and 30	
HIRL Rwy 17-35	
MIRL Rwy 12-30	



CATEGORY	A	B	C	D
S-ILS 35		1945-1/2	200 (200-1/2)	
S-LOC 35		2080-1/2	335 (400-1/2)	
CIRCLING	2260-1	511 (600-1)	2500-2 1/4 751 (800-2 1/4)	2500-2 1/2 751 (800-2 1/2)

WATERTOWN, SOUTH DAKOTA
Amdt 12 29DEC22

44°55'N-97°09'W

WATERTOWN RGNL (ATY) ILS or LOC RWY 35

WATERTOWN, SOUTH DAKOTA

AL-444 (FAA)

25331

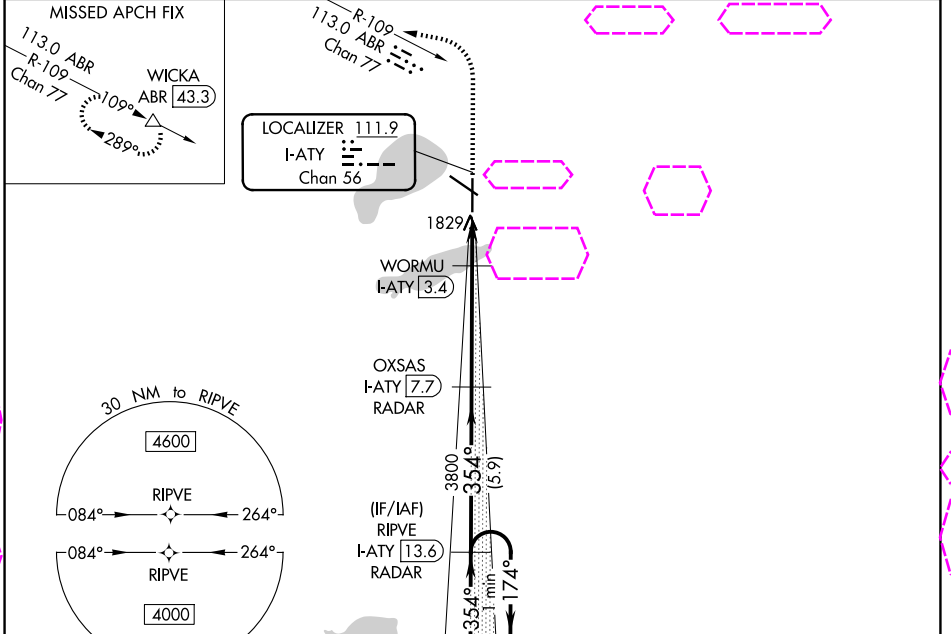
LOC/DME I-ATY 111.9 Chan 56	APP CRS 354°	Rwy Ldg 6893 TDZE 1745 Apt Elev 1749
---	------------------------	---

ILS or LOC RWY 35

WATERTOWN RGNL (ATY)

RNAV 1-GPS or RADAR required for procedure entry. DME required.	MALSR AS	MISSED APPROACH: Climb to 3600 then climbing left turn to 4500 on heading 275° and ABR R-109 to WICKA/ABR 43.3 DME and hold.
---	-------------	--

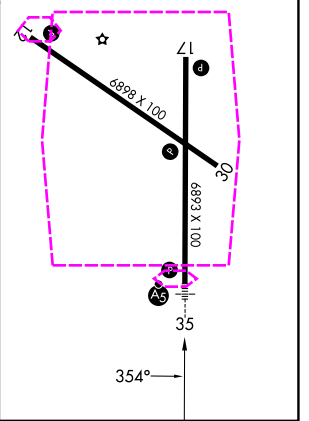
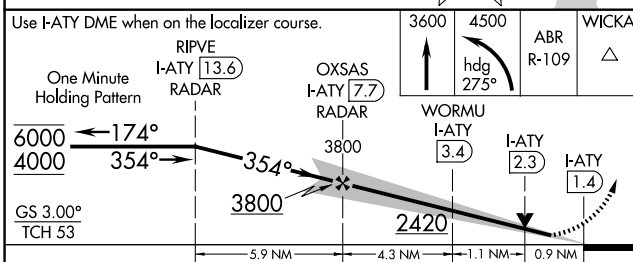
ASOS 126.625	MINNEAPOLIS CENTER 128.5 306.2	UNICOM 123.05 (CTAF) 0
------------------------	--	----------------------------------



NC-1, 27 NOV 2025 to 25 DEC 2025

NC-1, 27 NOV 2025 to 25 DEC 2025

ELEV 1749	TDZE 1745
REIL Rwy 12, 17 and 30	
HIRL Rwy 17-35	
MIRL Rwy 12-30	



CATEGORY	A	B	C	D
S-ILS 35		1945-1/2	200 (200-1/2)	
S-LOC 35		2080-1/2	335 (400-1/2)	
CIRCLING	2260-1	511 (600-1)	2500-2 1/4 751 (800-2 1/4)	2500-2 1/2 751 (800-2 1/2)

WATERTOWN, SOUTH DAKOTA
Amdt 12 29DEC22

44°55'N-97°09'W

WATERTOWN RGNL (ATY) ILS or LOC RWY 35