

APP CRS	Rwy Idg	<b>4321</b>
<b>096°</b>	TDZE	<b>1519</b>
	Apt Elev	<b>1519</b>

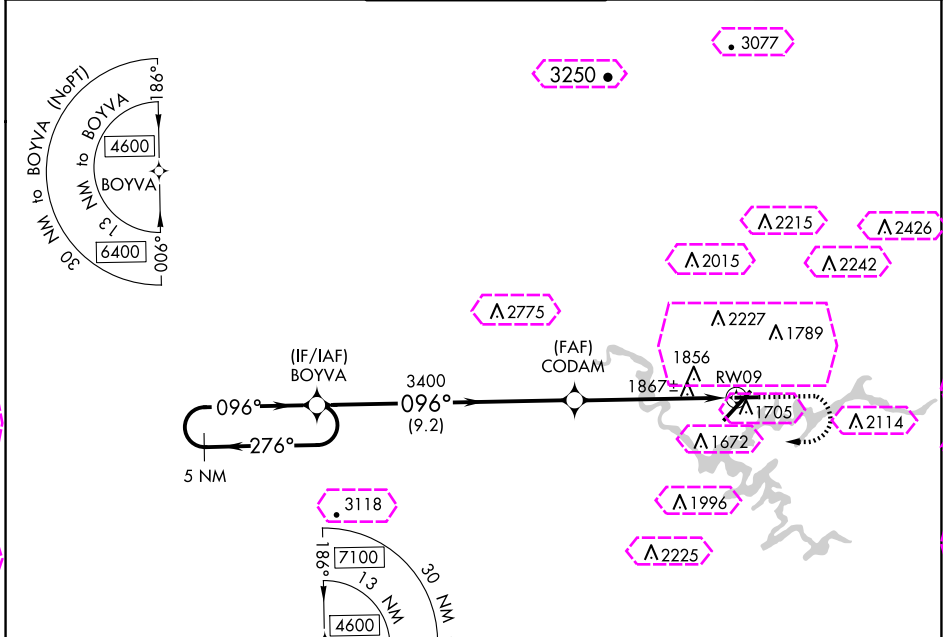
# RNAV (GPS) RWY 9

TRI-CITIES (TRI)

**⚠** Circling NA NW of Rws 9 and 23. Rwy 9 helicopter visibility reduction below 1 SM NA. DME/DME RNP-0.3 NA. Straight-in Rwy 9 NA at night, Circling Rwy 9 NA at night.

**⚠** MISSED APPROACH: Climb to 2000 then climbing right turn to 4600 direct BOYVA and hold.

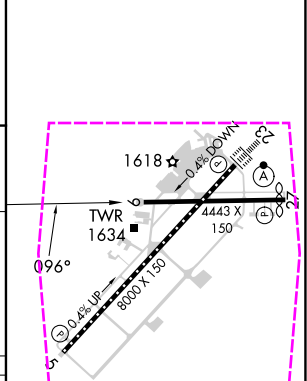
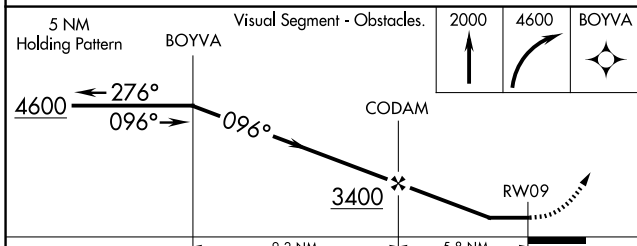
ATIS <b>118.25</b>	TRI-CITY APP CON ★ <b>134.425 349.0</b>	TRI-CITY TOWER ★ <b>119.5 (CTAF) 257.8</b>	GND CON <b>121.7 348.6</b>	UNICOM <b>122.95</b>
-----------------------	--	---	-------------------------------	-------------------------



SE-1, 30 OCT 2025 to 27 NOV 2025

SE-1, 30 OCT 2025 to 27 NOV 2025

ELEV 1519	<b>D</b>	TDZE 1519
-----------	----------	-----------



CATEGORY	A	B	C	D
LNVA MDA	2120-1	601 (700-1)	2120-1¾	601 (700-1¾)
<b>CIRCLING</b>	2120-1 601 (700-1)	2180-1 661 (700-1)	2300-2¼ 781 (800-2¼)	2500-3 981 (1000-3)

REIL Rws 5 and 27  
HIRL Rwy 5-23  
MIRL Rwy 9-27  
TDZ/CL Rwy 23

APP CRS	Rwy Ldg	<b>4321</b>
<b>096°</b>	TDZE	<b>1519</b>
	Apt Elev	<b>1519</b>

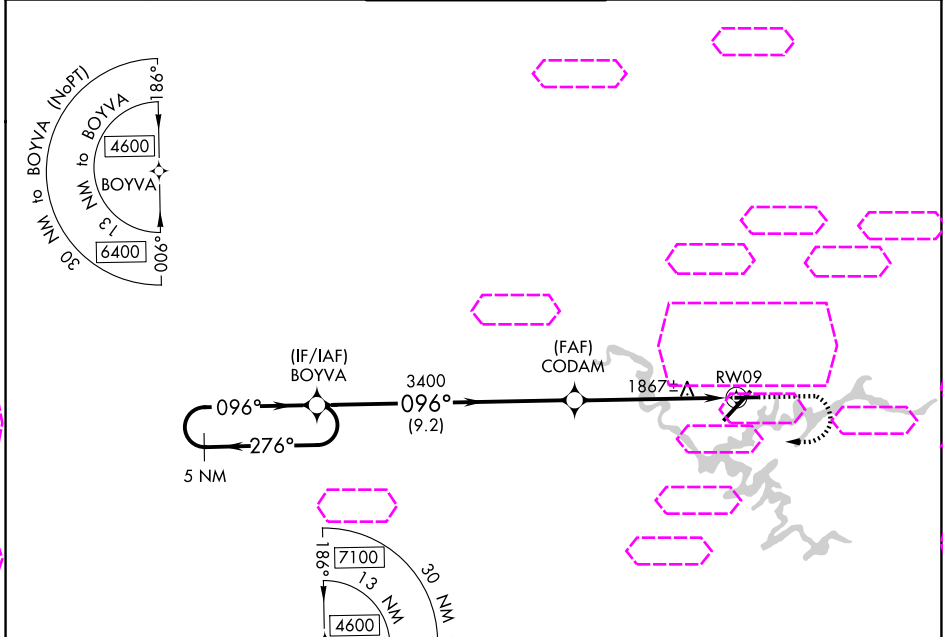
# RNAV (GPS) RWY 9

TRI-CITIES (TRI)

**⚠** Circling NA NW of Rws 9 and 23. Rwy 9 helicopter visibility reduction below 1 SM NA. DME/DME RNP-0.3 NA. Straight-in Rwy 9 NA at night, Circling Rwy 9 NA at night.

MISSED APPROACH: Climb to 2000 then climbing right turn to 4600 direct BOYVA and hold.

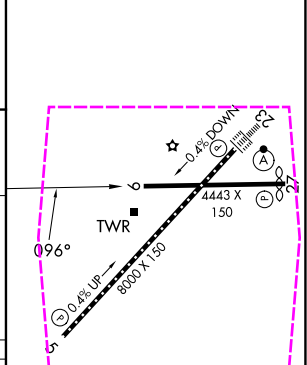
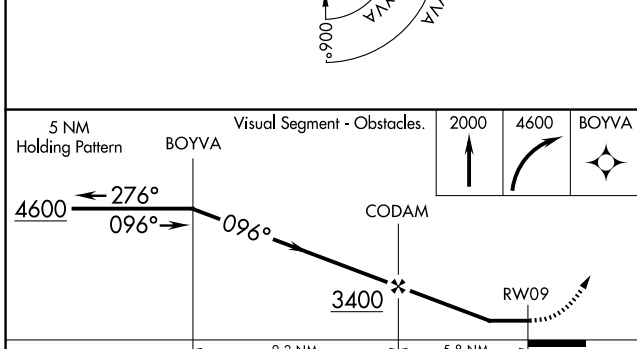
ATIS <b>118.25</b>	TRI-CITY APP CON ★ <b>134.425 349.0</b>	TRI-CITY TOWER ★ <b>119.5 (CTAF) 257.8</b>	GND CON <b>121.7 348.6</b>	UNICOM <b>122.95</b>
-----------------------	--	---	-------------------------------	-------------------------



SE-1, 27 NOV 2025 to 25 DEC 2025

SE-1, 27 NOV 2025 to 25 DEC 2025

ELEV 1519	<b>D</b> TDZE 1519
-----------	--------------------



CATEGORY	A	B	C	D
LNVA MDA	2120-1	601 (700-1)	2120-1¾	601 (700-1¾)
<b>CIRCLING</b>	2120-1 601 (700-1)	2180-1 661 (700-1)	2300-2¼ 781 (800-2¼)	2500-3 981 (1000-3)

REIL Rws 5 and 27  
HIRL Rwy 5-23  
MIRL Rwy 9-27  
TDZL/RCLS Rwy 23