

WAAS CH 63140 W27A	APP CRS 276°	Rwy Idg TDZE Apt Elev	4057 1518 1519
--	------------------------	-----------------------------	---

RNAV (GPS) RWY 27

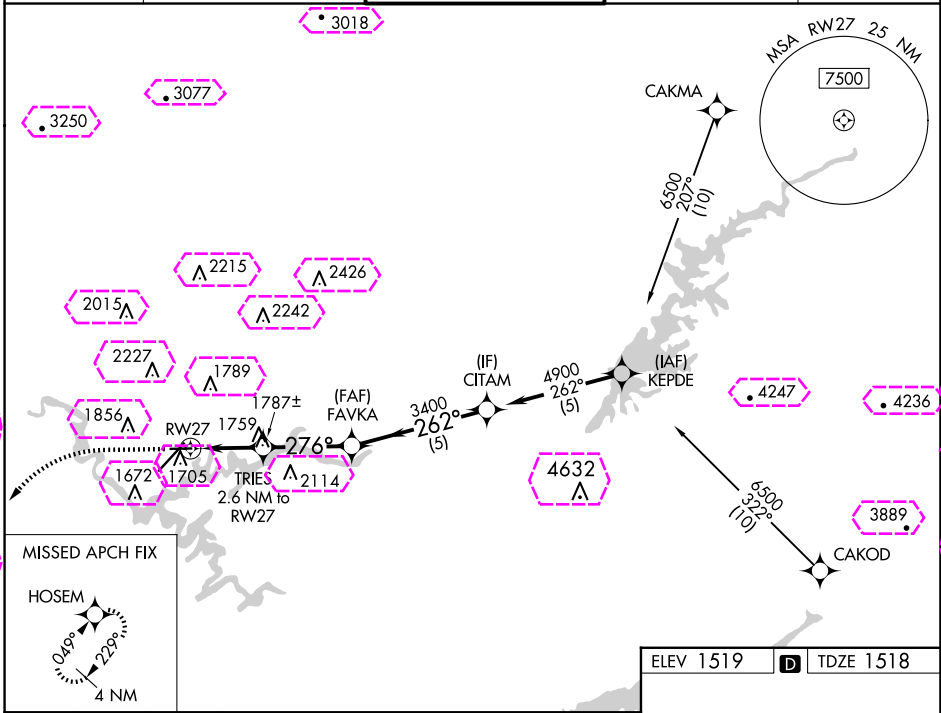
TRI-CITIES (TRI)

RNP APCH.

⚠ Circling to Rwy 9 NA at night. Circling NA northwest of Rwy 9 and 23.
⚠ Rwy 27 helicopter visibility reduction below 3/4 SM NA. For uncompensated Baro-VNAV systems, LNAV/VNAV NA below -14°C or above 54°C.

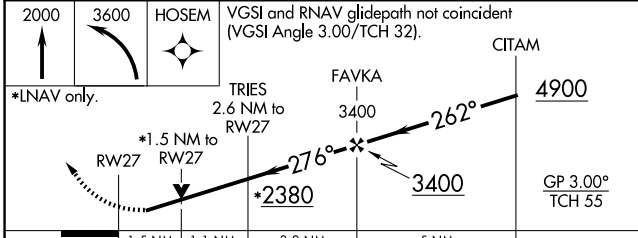
MISSED APPROACH: Climb to 2000 then climbing left turn to 3600 direct HOSEM and hold.

ATIS 118.25	TRI-CITY APP CON ★ 134.425 349.0	TRI-CITY TOWER ★ 119.5 (CTAF) 257.8	GND CON 121.7 348.6	UNICOM 122.95
-----------------------	--	---	-------------------------------	-------------------------

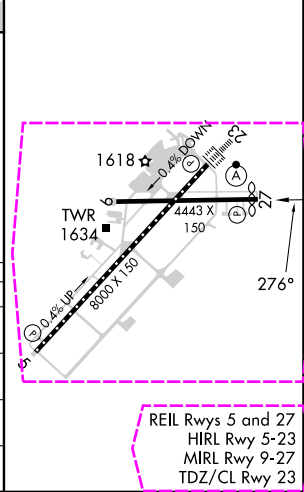


SE-1, 30 OCT 2025 to 27 NOV 2025

SE-1, 30 OCT 2025 to 27 NOV 2025



ELEV 1519	TDZE 1518
-----------	-----------



CATEGORY	A	B	C	D
LPV DA		1788-7/8	270 (300-7/8)	
LNAV/VNAV DA		2034-13/4	516 (600-13/4)	
LNAV MDA	2020-1	502 (600-1)	2020-13/8	502 (600-13/8)
C CIRCLING	2120-1 601 (700-1)	2180-1 661 (700-1)	2320-2 1/4 801 (900-2 1/4)	2500-3 981 (1000-3)

REIL Rwy 5 and 27
 HIRL Rwy 5-23
 MIRL Rwy 9-27
 TDZ/CL Rwy 23

WAAS CH 63140 W27A	APP CRS 276°	Rwy Ldg TDZE Apt Elev	4057 1518 1519
--	------------------------	-----------------------------	---

RNAV (GPS) RWY 27

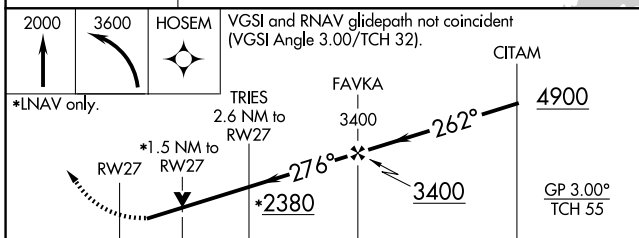
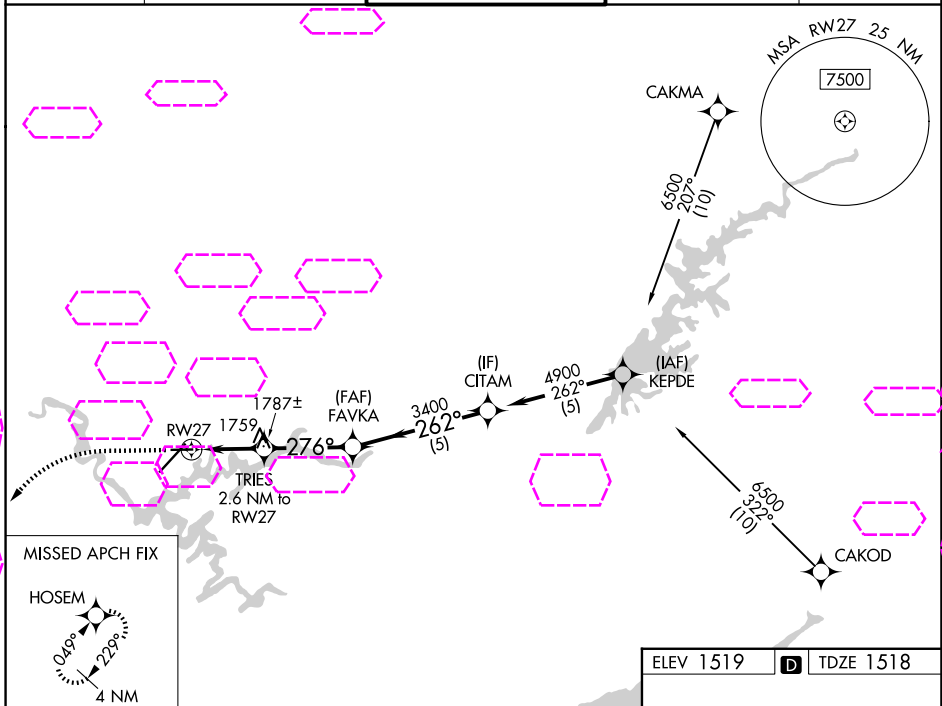
TRI-CITIES (TRI)

RNP APCH.

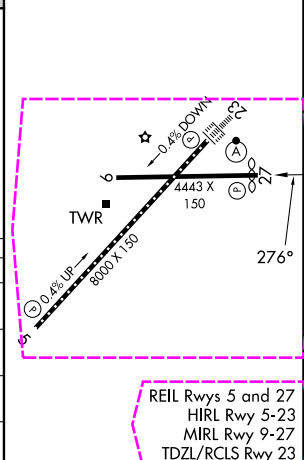
⚠ Circling to Rwy 9 NA at night. Circling NA northwest of Rwy 9 and 23.
⚠ Rwy 27 helicopter visibility reduction below 3/4 SM NA. For uncompensated Baro-VNAV systems, LNAV/VNAV NA below -14°C or above 54°C.

MISSED APPROACH: Climb to 2000 then climbing left turn to 3600 direct HOSEM and hold.

ATIS 118.25	TRI-CITY APP CON * 134.425 349.0	TRI-CITY TOWER * 119.5 (CTAF) 257.8	GND CON 121.7 348.6	UNICOM 122.95
-----------------------	--	---	-------------------------------	-------------------------



ELEV 1519	D	TDZE 1518
-----------	----------	-----------



CATEGORY	A	B	C	D
LPV DA		1788-7/8	270 (300-7/8)	
LNAV/VNAV DA		2034-13/4	516 (600-13/4)	
LNAV MDA	2020-1	502 (600-1)	2020-13/8	502 (600-13/8)
CIRCLING	2120-1 601 (700-1)	2180-1 661 (700-1)	2320-2 1/4 801 (900-2 1/4)	2500-3 981 (1000-3)

SE-1, 27 NOV 2025 to 25 DEC 2025

SE-1, 27 NOV 2025 to 25 DEC 2025