

25219

AIRPORT DIAGRAM

AL-424 (FAA)

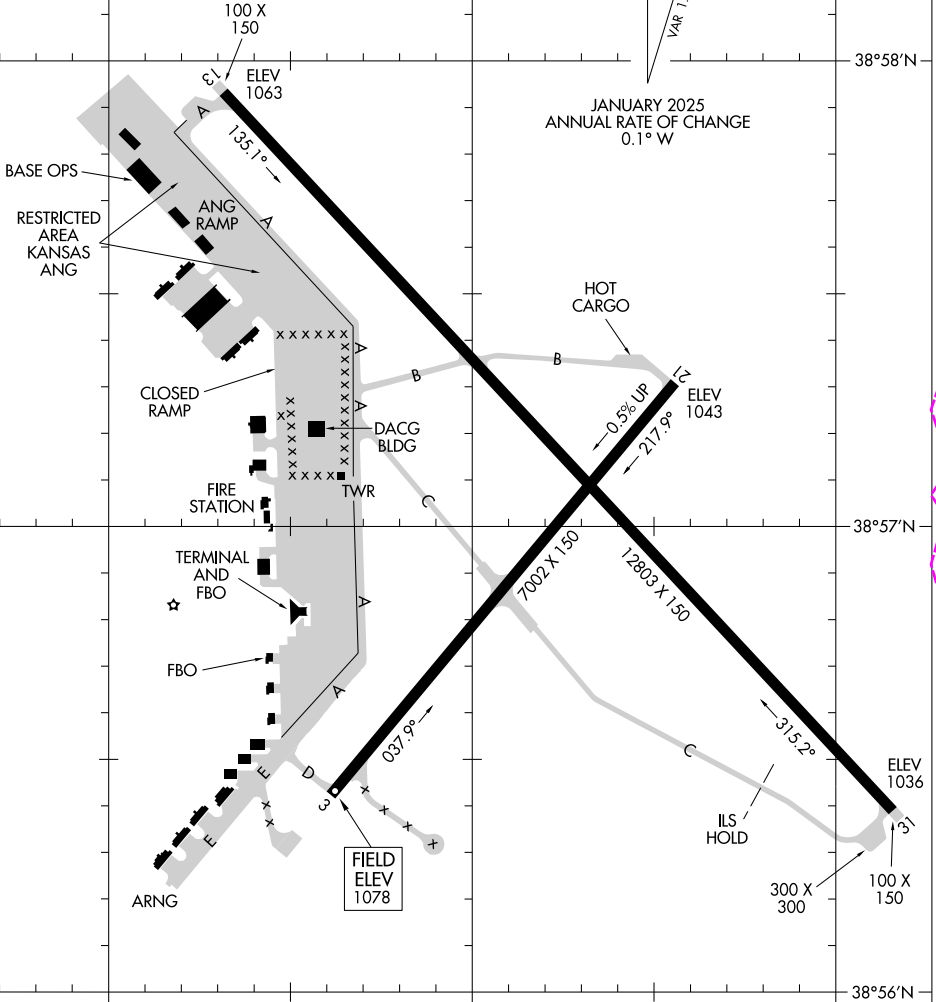
TOPEKA RGNL (F0E)
TOPEKA, KANSAS

ATIS
128.25
FORBES TOWER*
120.8 340.2
GND CON
118.425 275.8

D



JANUARY 2025
ANNUAL RATE OF CHANGE
0.1° W



NC-2 30 OCT 2025 to 27 NOV 2025

NC-2 30 OCT 2025 to 27 NOV 2025

CAUTION: BE ALERT TO RUNWAY CROSSING CLEARANCES. READBACK OF ALL RUNWAY HOLDING INSTRUCTIONS IS REQUIRED.

CAUTION: DO NOT CONFUSE TOPEKA RGNL AIRPORT WITH TOPEKA BILLARD AIRPORT LOCATED 7 MILES NORTH.

RWY 03-21
PCN 46 R/C/X/T
S-75, D-140, 2D-220, 2D/2D2-620

RWY 13-31
PCN 89 R/C/X/T
S-75, D-200, 2D-280, 2D/2D2-760

95°41'W 95°40'W 95°39'W

AIRPORT DIAGRAM

25219

TOPEKA, KANSAS
TOPEKA RGNL (F0E)

25331

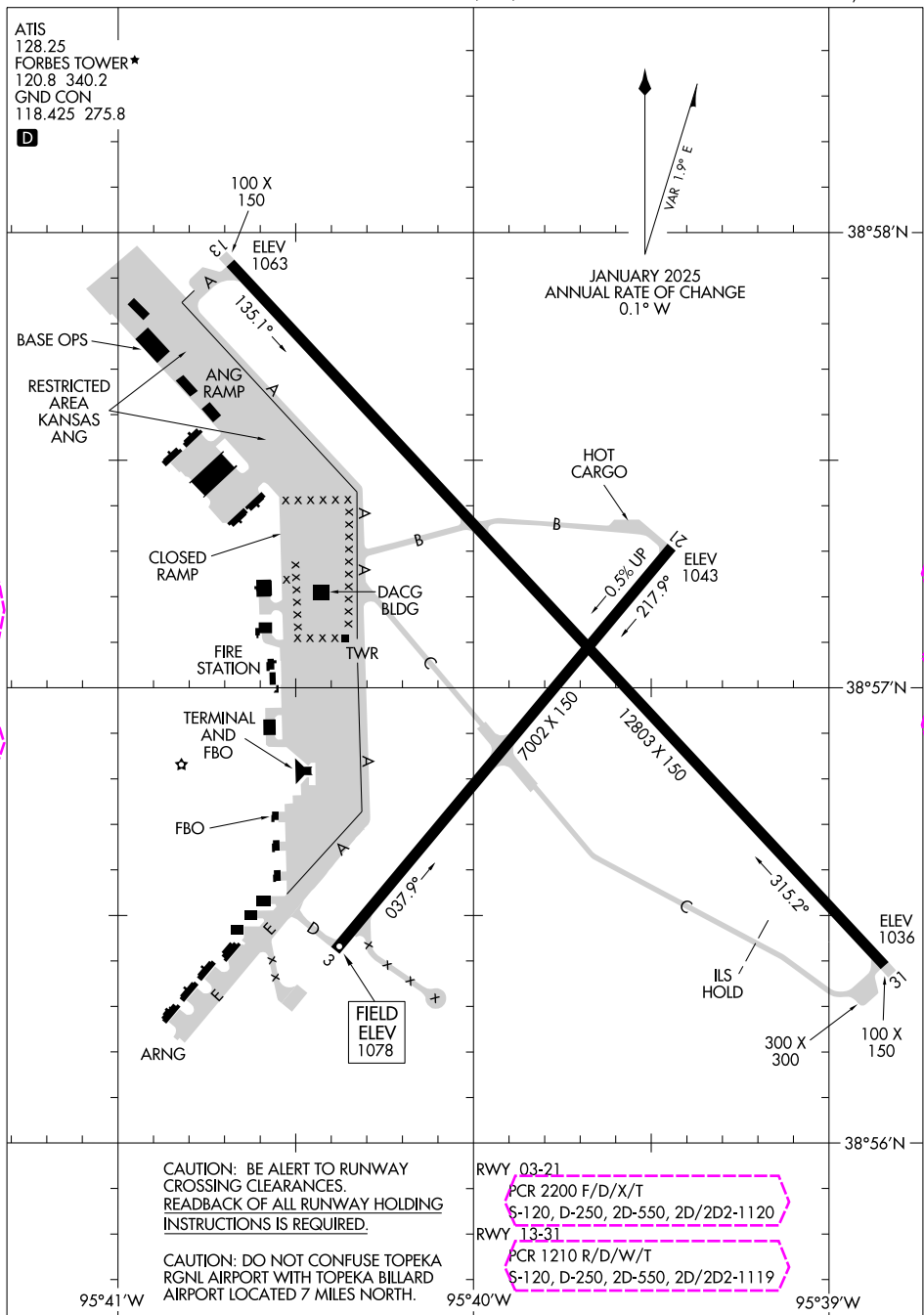
AIRPORT DIAGRAM

AL-424 (FAA)

TOPEKA RGNL (F0E)
TOPEKA, KANSAS

ATIS
128.25
FORBES TOWER*
120.8 340.2
GND CON
118.425 275.8

D



JANUARY 2025
ANNUAL RATE OF CHANGE
0.1° W

NC-2 27 NOV 2025 to 25 DEC 2025

NC-2 27 NOV 2025 to 25 DEC 2025

CAUTION: BE ALERT TO RUNWAY CROSSING CLEARANCES.
READBACK OF ALL RUNWAY HOLDING INSTRUCTIONS IS REQUIRED.

CAUTION: DO NOT CONFUSE TOPEKA RGNL AIRPORT WITH TOPEKA BILLARD AIRPORT LOCATED 7 MILES NORTH.

RWY 03-21
PCR 2200 F/D/X/T
S-120, D-250, 2D-550, 2D/2D2-1120

RWY 13-31
PCR 1210 R/D/W/T
S-120, D-250, 2D-550, 2D/2D2-1119

AIRPORT DIAGRAM

25331

TOPEKA, KANSAS
TOPEKA RGNL (F0E)