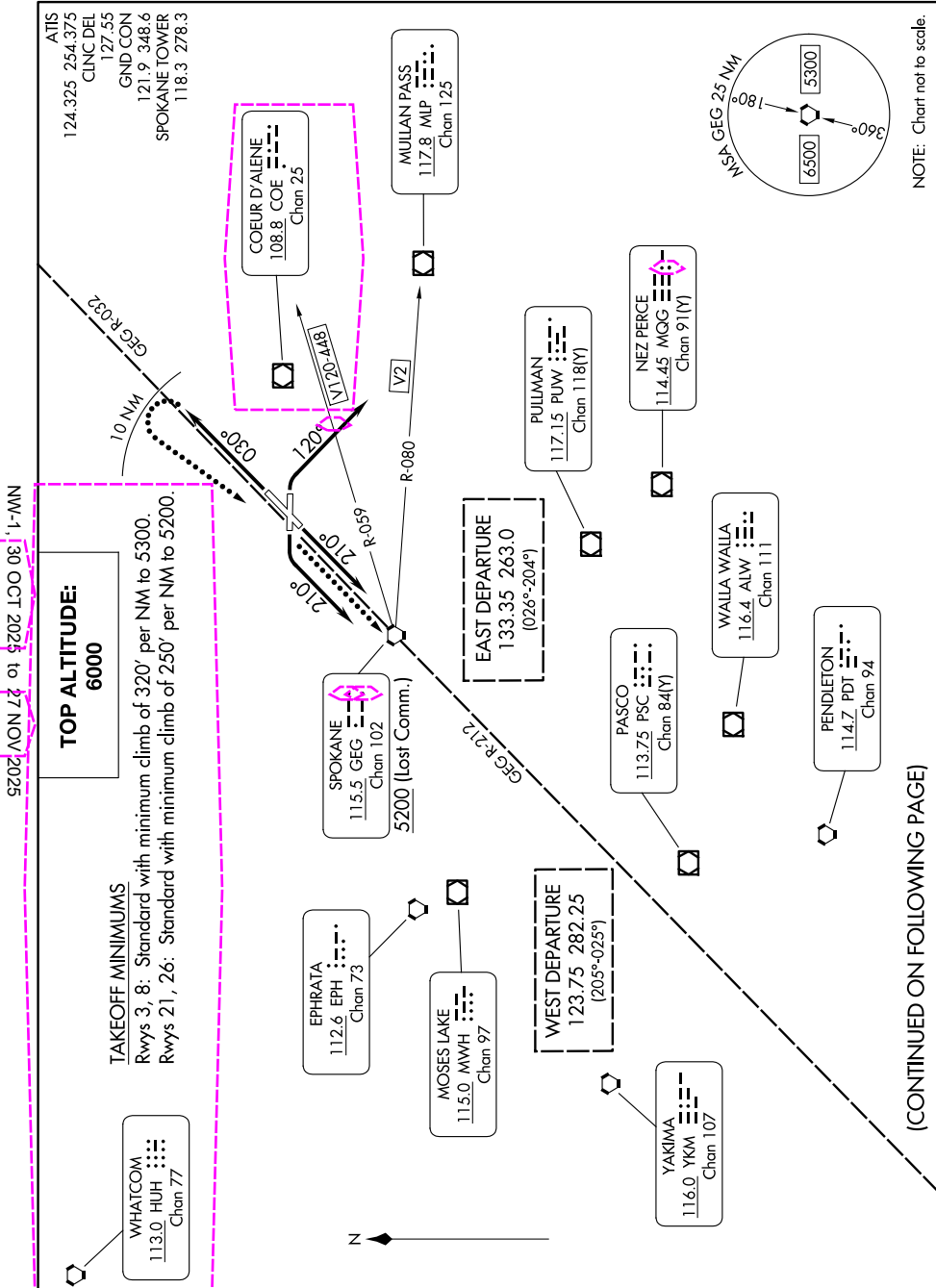


23334

SPOKANE SEVEN DEPARTURE

AL-403 (FAA)

SPOKANE INTL (GEG)
SPOKANE, WASHINGTON



NW-1, 30 OCT 2025 to 27 NOV 2025

NW-1, 30 OCT 2025 to 27 NOV 2025

(CONTINUED ON FOLLOWING PAGE)

SPOKANE SEVEN DEPARTURE

SPOKANE, WASHINGTON
SPOKANE INTL (GEG)

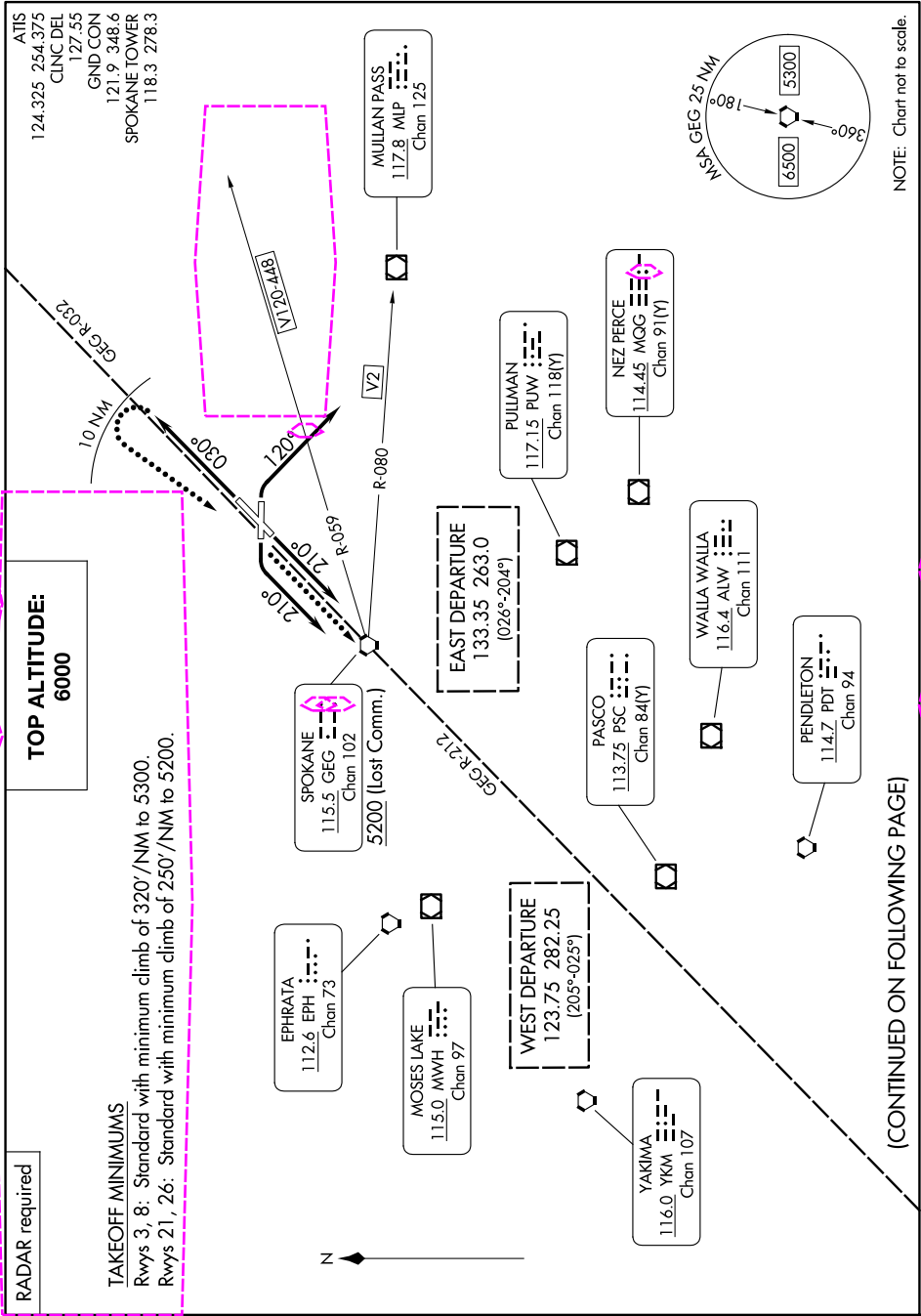
15JUN23

25331

SPOKANE EIGHT DEPARTURE

AL-403 (FAA)

SPOKANE INTL (GEG)
SPOKANE, WASHINGTON



NOTE: Chart not to scale.

(CONTINUED ON FOLLOWING PAGE)

SPOKANE EIGHT DEPARTURE

SPOKANE, WASHINGTON
SPOKANE INTL (GEG)

27NOV25

NW-1, 27 NOV 2025 to 25 DEC 2025

NW-1, 27 NOV 2025 to 25 DEC 2025

TOP ALTITUDE:
6000

TAKEOFF MINIMUMS
Rwys 3, 8: Standard with minimum climb of 320'/NM to 5300.
Rwys 21, 26: Standard with minimum climb of 250'/NM to 5200.

RADAR required