

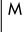
WAAS CH 42722 W04A	APP CRS 040°	Rwy Idg TDZE Apf Elev	7001 338 378
--	------------------------	-----------------------------	---

RNAV (GPS) RWY 4

SCHENECTADY COUNTY (SCH)

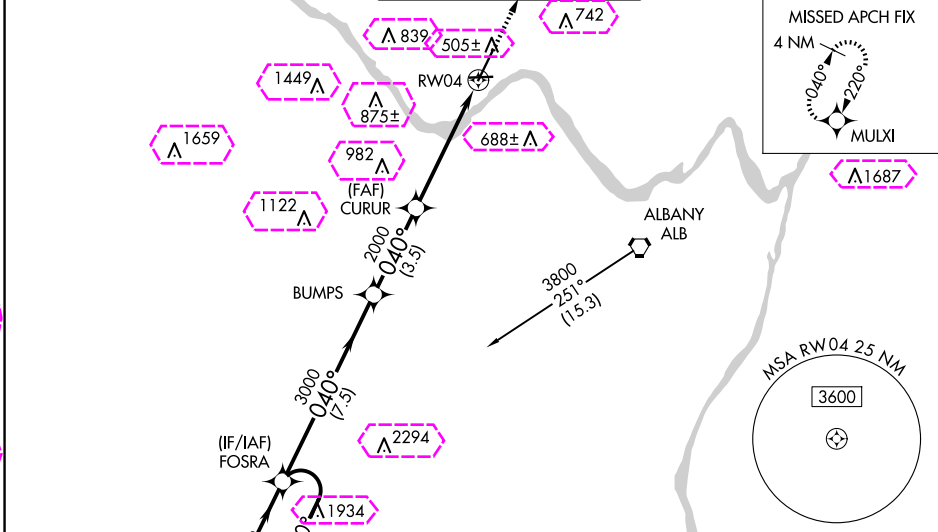
RNP APCH - GPS

▼ Circling Rwy 10 NA at night. Baro-VNAV and VDP NA when using Albany altimeter setting.
▲ Rwy 4 helicopter visibility reduction below ¾ SM NA. Inop table does not apply to LPV.
 For uncompensated Baro-VNAV systems, LNAV/VNAV NA below -15°C or above 54°C.
 When local altimeter setting not received, use Albany altimeter setting and increase LPV DA to 621 feet, LNAV/VNAV DA to 638 feet, and increase all MDAs 40 feet. For inop ALS, increase LNAV/VNAV all Cats visibility to ¾ SM and LNAV Cats A/B to 1 SM and Cats C/D to 1 ½ SM. For inop ALS when using Albany altimeter setting, increase LPV all Cats visibility to ¾ SM, increase LNAV/VNAV all Cats to ¾ SM, increase LNAV Cats A/B visibility to 1 SM, and Cats C/D to 1 ½ SM.

MALSR 

MISSED APPROACH:
Climb to 3000 direct MULXI and hold.

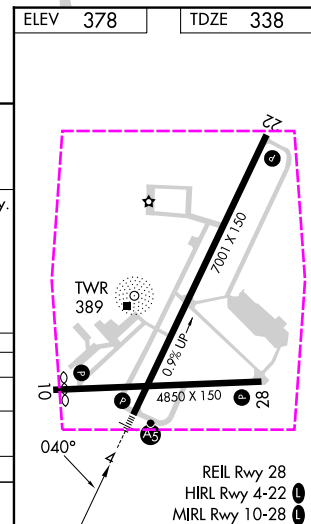
AWOS-3 119.275	ALBANY APP CON 132.825 263.075	SCHENECTADY TOWER * 121.3 (CTAF) 321.1	GND CON 121.9	UNICOM 122.95
--------------------------	--	--	-------------------------	-------------------------



NE-2, 30 OCT 2025 to 27 NOV 2025

NE-2, 30 OCT 2025 to 27 NOV 2025

4 NM Holding Pattern		VGSI and RNAV glidepath not coincident (VGSI Angle 3.00/TCH 51).		3000	MULXI
FOSRA		BUMPS	CURUR	* LNAV only.	
6000 ← 220°	3700 → 040°	3000	2000	* 1.3 NM to RW04	RW04
GP 3.00°	TCH 55	2000			
7.5 NM		3.5 NM	3.8 NM	1.3	
CATEGORY	A	B	C	D	
LPV DA		588-¾	250 (300-¾)		
LNAV/VNAV DA		605-¾	267 (300-¾)		
LNAV MDA	800-¾	462 (500-¾)	800-1	462 (500-1)	
CIRCLING	880-1 502 (600-1)	940-1 562 (600-1)	1120-2¼ 742 (800-2¼)	1320-3 942 (1000-3)	



REIL Rwy 28
HIRL Rwy 4-22
MIRL Rwy 10-28

WAAS CH 42722 W04A	APP CRS 040°	Rwy Ldg TDZE Apf Elev	7001 338 378
--	------------------------	-----------------------------	---

RNAV (GPS) RWY 4

SCHENECTADY COUNTY (SCH)

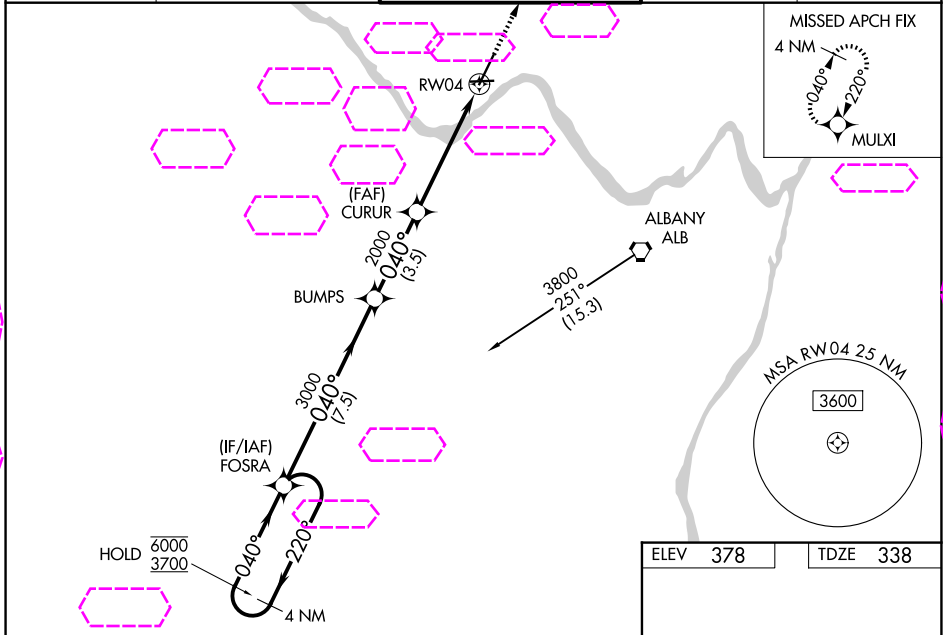
RNP APCH - GPS

▼ Circling Rwy 10 NA at night. Baro-VNAV and VDP NA when using Albany altimeter setting.
▲ Rwy 4 helicopter visibility reduction below ¾ SM NA. Inop table does not apply to LPV.
 For uncompensated Baro-VNAV systems, LNAV/VNAV NA below -15°C or above 54°C.
 When local altimeter setting not received, use Albany altimeter setting and increase LPV DA to 621 feet, LNAV/VNAV DA to 638 feet, and increase all MDAs 40 feet. For inop ALS, increase LNAV/VNAV all Cats visibility to ¾ SM and LNAV Cats A/B to 1 SM and Cats C/D to 1 ½ SM. For inop ALS when using Albany altimeter setting, increase LPV all Cats visibility to ¾ SM, increase LNAV/VNAV all Cats to ¾ SM, increase LNAV Cats A/B visibility to 1 SM, and Cats C/D to 1 ½ SM.



MISSED APPROACH:
Climb to 3000 direct
MULXI and hold.

AWOS-3 119.275	ALBANY APP CON 132.825 263.075	SCHENECTADY TOWER * 121.3 (CTAF) 0 321.1	GND CON 121.9	UNICOM 122.95
--------------------------	--	--	-------------------------	-------------------------



NE-2, 127 NOV 2025 to 25 DEC 2025

NE-2, 27 NOV 2025 to 25 DEC 2025

4 NM Holding Pattern		VGSI and RNAV glidepath not coincident (VGSI Angle 3.00/TCH 51).		3000	MULXI
FOSRA		BUMPS	CURUR	* LNAV only.	
6000 ← 220°	3700 → 040°	3000	2000	*1.3 NM to RWY 4	RWY 4
GP 3.00°	TCH 55	7.5 NM	3.5 NM	3.8 NM	1.3
CATEGORY	A	B	C	D	
LPV DA		588-¾	250 (300-¾)		
LNAV/VNAV DA		605-¾	267 (300-¾)		
LNAV MDA	800-¾	462 (500-¾)	800-1	462 (500-1)	
CIRCLING	880-1 502 (600-1)	940-1 562 (600-1)	1120-2¼ 742 (800-2¼)	1320-3 942 (1000-3)	

