

SALINA, KANSAS

AL-362 (FAA)

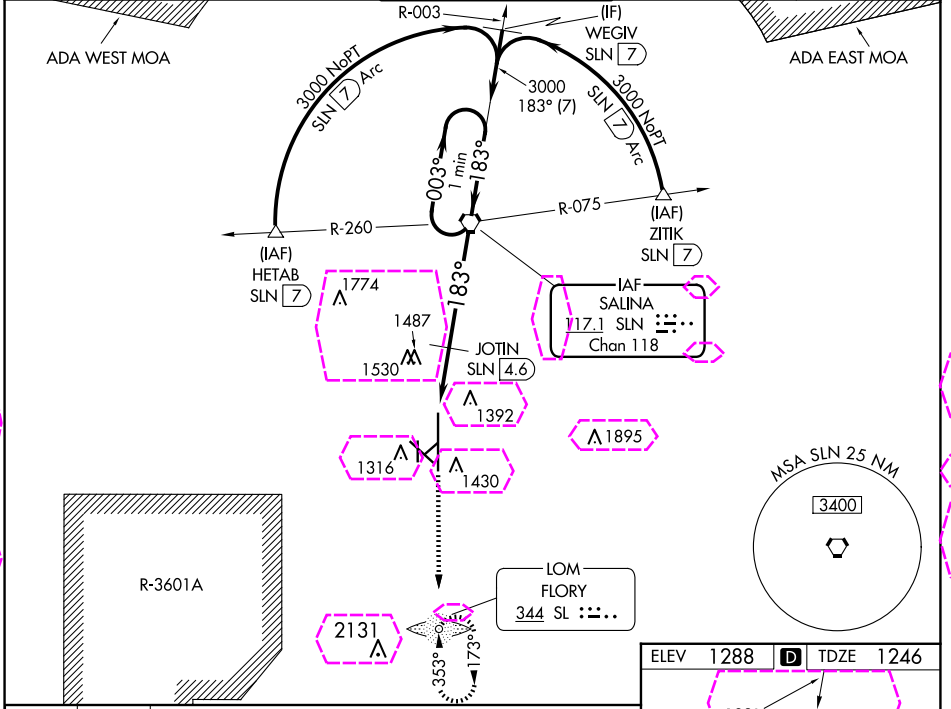
25163

VORTAC SLN	APP CRS	Rwy Ldg	<b>12300</b>
<b>117.1</b>	<b>183°</b>	TDZE	<b>1246</b>
Chan <b>118</b>		Apt Elev	<b>1288</b>

# VOR RWY 17

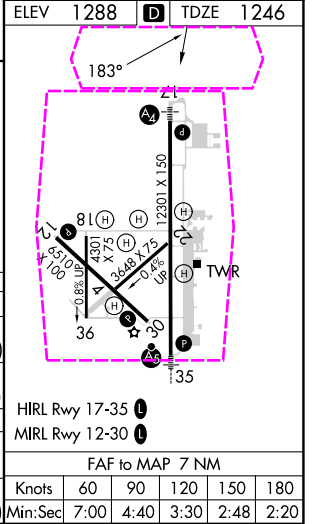
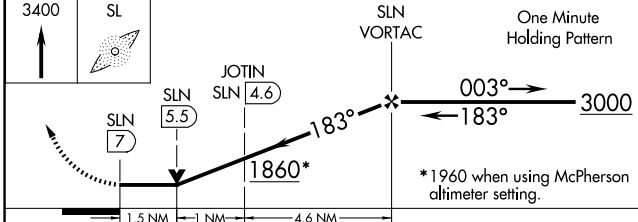
SALINA RGNL (SLN)

<p><b>▽</b> Inoperative table does not apply to Cat C/D/E.  <b>▲</b> Circling NA for Cat D/E southwest of Rwy 12-30.                  ADF required.</p>	MALS	MISSED APPROACH: Climb to 3400 direct SL LOM and hold.		
	<p>ATIS <b>120.15</b></p>	<p>KANSAS CITY CENTER <b>134.9 363.2</b></p>	<p>SALINA TOWER * <b>119.3 (CTAF) 0 257.7</b></p>	<p>GND CON <b>121.9 360.8</b></p>



NC-2 30 OCT 2025 to 27 NOV 2025

NC-2 30 OCT 2025 to 27 NOV 2025



CATEGORY	A	B	C	D	E
S-17	1860-3/4 614 (600-3/4)		1860-1 3/4 614 (600-1 3/4)	1860-2 614 (600-2)	1860-2 1/4 614 (600-2 1/4)
CIRCLING	1860-1 572 (600-1)		1860-1 3/4 572 (600-1 3/4)	1860-2 572 (600-2)	1920-2 1/4 632 (700-2 1/4)
JOTIN FIX MINIMUMS					
S-17	1760-3/4 514 (500-3/4)		1760-1 1/2 514 (500-1 1/2)	1760-1 3/4 514 (500-1 3/4)	
CIRCLING	1820-1 532 (600-1)	1840-1 552 (600-1)	1860-1 1/2 572 (600-1 1/2)	1860-2 572 (600-2)	1920-2 1/4 632 (700-2 1/4)

SALINA, KANSAS  
Amdt 2A 20MAY21

38°47'N-97°39'W

# SALINA RGNL (SLN) VOR RWY 17

FAF to MAP 7 NM					
Knots	60	90	120	150	180
Min:Sec	7:00	4:40	3:30	2:48	2:20

SALINA, KANSAS

AL-362 (FAA)

25331

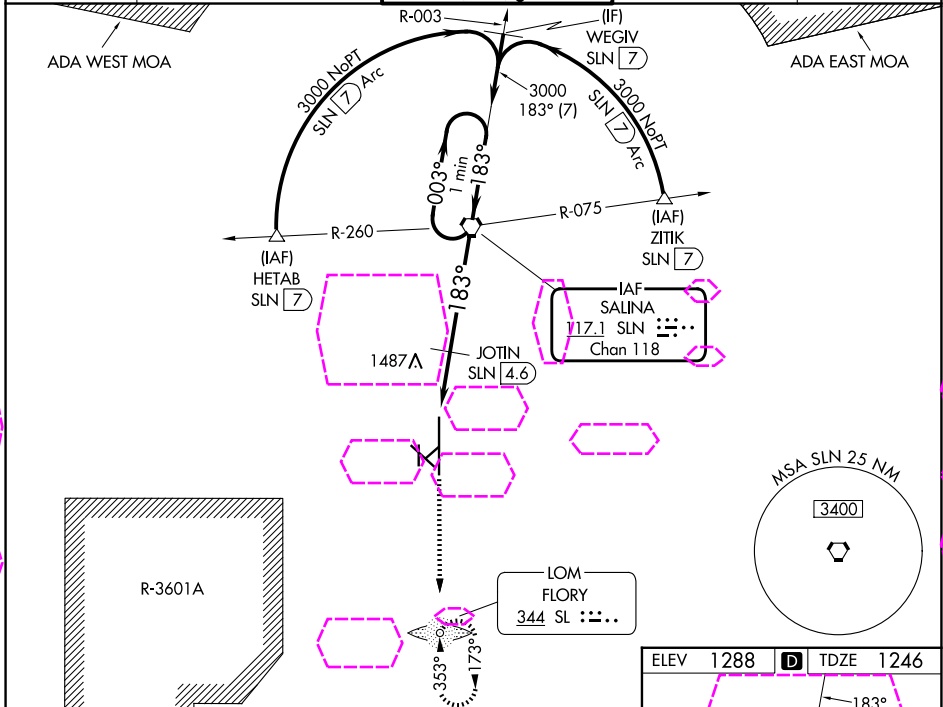
VORTAC SLN	APP CRS	Rwy Ldg	<b>12300</b>
<b>117.1</b>	<b>183°</b>	TDZE	<b>1246</b>
Chan <b>118</b>		Apt Elev	<b>1288</b>

# VOR RWY 17

SALINA RGNL (SLN)

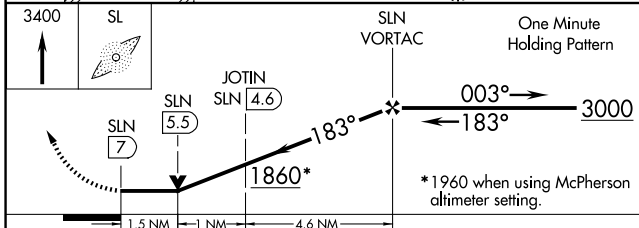
<p><b>▼</b> Inoperative table does not apply to Cat C/D/E.  <b>▲</b> Circling NA for Cat D/E southwest of Rwy 12-30.                  ADF required.</p>	<p>MALS</p>	<p>MISSED APPROACH: Climb to 3400 direct SL LOM and hold.</p>

ATIS	KANSAS CITY CENTER	SALINA TOWER *	GND CON	UNICOM
<b>120.15</b>	<b>134.9 363.2</b>	<b>119.3 (CTAF) 0 257.7</b>	<b>121.9 360.8</b>	<b>122.95</b>



NC-2, 127 NOV 2025 to 25 DEC 2025

NC-2, 27 NOV 2025 to 25 DEC 2025



CATEGORY	A	B	C	D	E
S-17	1860-¾ 614 (600-¾)		1860-1¾ 614 (600-1¾)	1860-2 614 (600-2)	1860-2¼ 614 (600-2¼)
CIRCLING	1860-1 572 (600-1)		1860-1¾ 572 (600-1¾)	1860-2 572 (600-2)	1920-2¼ 632 (700-2¼)
JOTIN FIX MINIMUMS					
S-17	1760-¾ 514 (500-¾)		1760-1½ 514 (500-1½)	1760-1¾ 514 (500-1¾)	
CIRCLING	1820-1 532 (600-1)	1840-1 552 (600-1)	1860-1½ 572 (600-1½)	1860-2 572 (600-2)	1920-2¼ 632 (700-2¼)

ELEV	1288	D	TDZE	1246
------	------	---	------	------

SALINA, KANSAS  
Amdt 2A 20MAY21

38°47'N-97°39'W

# SALINA RGNL (SLN)

## VOR RWY 17

FAF to MAP 7 NM					
Knots	60	90	120	150	180
Min:Sec	7:00	4:40	3:30	2:48	2:20