

SALINA, KANSAS

AL-362 (FAA)

25163

APP CRS 305°	Rwy Ldg TDZE Apt Elev	6510 1273 1288
------------------------	-----------------------------	---

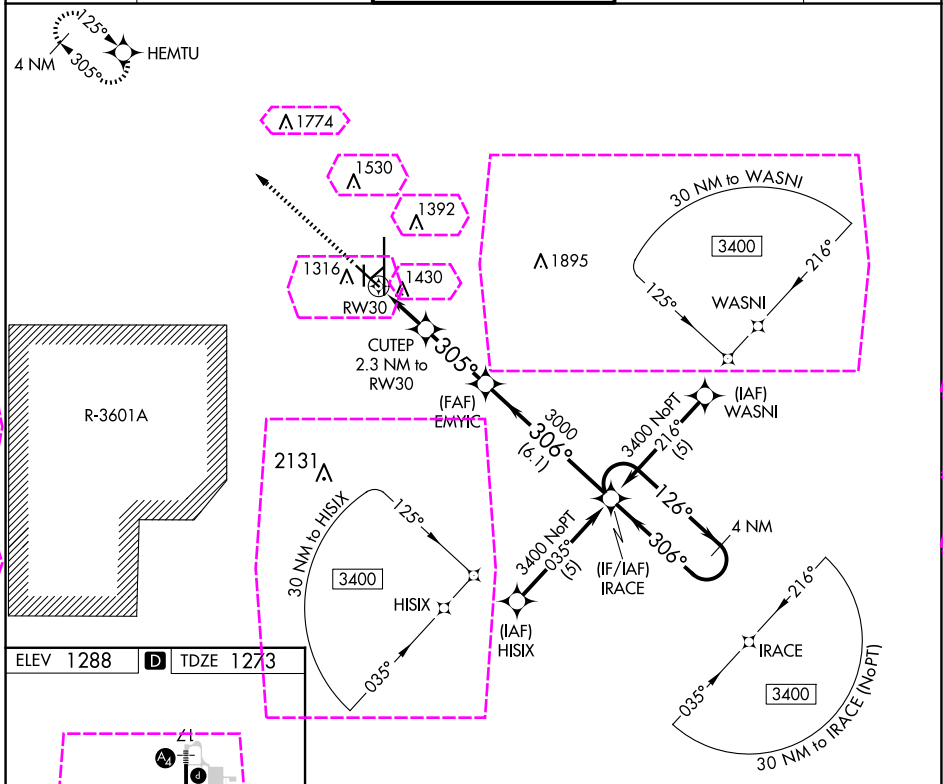
RNAV (GPS) RWY 30

SALINA RGNL (SLN)

⚠ Circling NA for Cat D southwest of runway 12-30.
⚠ DME/DME RNP-0.3 NA.

MISSED APPROACH: Climb to 3400 direct HEMTU and hold.

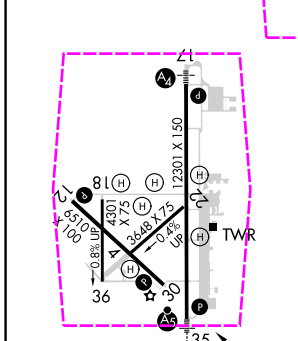
ATIS 120.15	KANSAS CITY CENTER 134.9 363.2	SALINA TOWER ★ 119.3 (CTAF) 0 257.7	GND CON 121.9 360.8	UNICOM 122.95
-----------------------	--	---	-------------------------------	-------------------------



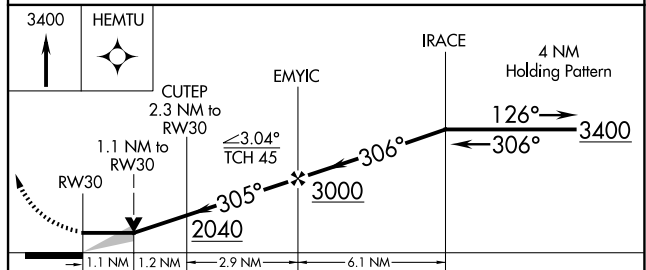
NC-2, 30 OCT 2025 to 27 NOV 2025

NC-2, 30 OCT 2025 to 27 NOV 2025

ELEV 1288	D TDZE 1273
-----------	--------------------



HIRL Rwy 17-35	MIRL Rwy 12-30
----------------	----------------



CATEGORY	A	B	C	D
LNAV MDA	1680-1	407 (400-1)	1680-1½	407 (400-1½)
CIRCLING	1820-1 532 (600-1)	1840-1 552 (600-1)	1860-1½ 572 (600-1½)	1860-2 572 (600-2)

SALINA, KANSAS
 Orig-A 20MAY21

38°47'N-97°39'W

RNAV (GPS) RWY 30

SALINA, KANSAS

AL-362 (FAA)

25331

APP CRS 305°	Rwy Ldg TDZE Apt Elev	6510 1273 1288
------------------------	-----------------------------	---

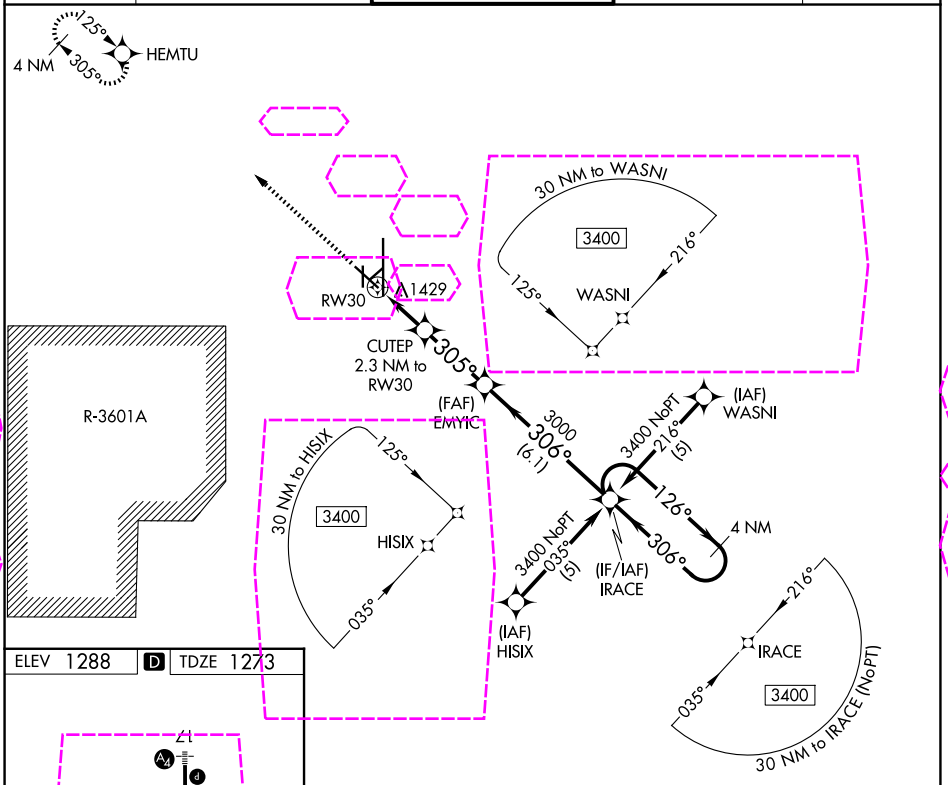
RNAV (GPS) RWY 30

SALINA RGNL (SLN)

⚠ Circling NA for Cat D southwest of runway 12-30.
⚠ DME/DME RNP-0.3 NA.

MISSED APPROACH: Climb to 3400 direct HEMTU and hold.

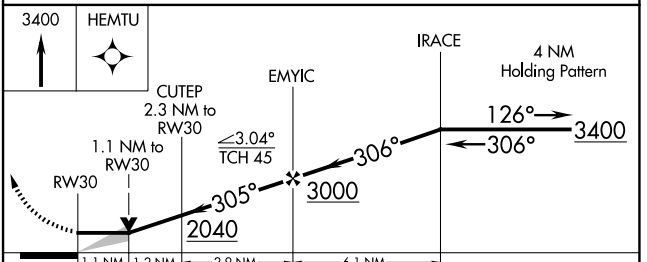
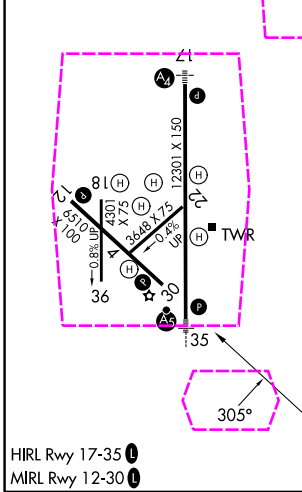
ATIS 120.15	KANSAS CITY CENTER 134.9 363.2	SALINA TOWER ★ 119.3 (CTAF) 0 257.7	GND CON 121.9 360.8	UNICOM 122.95
-----------------------	--	---	-------------------------------	-------------------------



NC-2, 27 NOV 2025 to 25 DEC 2025

NC-2, 27 NOV 2025 to 25 DEC 2025

ELEV 1288	D	TDZE 1273
-----------	----------	-----------



CATEGORY	A	B	C	D
LNAV MDA	1680-1	407 (400-1)	1680-1¼	407 (400-1¼)
CIRCLING	1820-1 532 (600-1)	1840-1 552 (600-1)	1860-1½ 572 (600-1½)	1860-2 572 (600-2)

SALINA, KANSAS
 Orig-A 20MAY21

38°47'N-97°39'W

RNAV (GPS) RWY 30

SALINA RGNL (SLN)