

SALINA, KANSAS

AL-362 (FAA)

25163

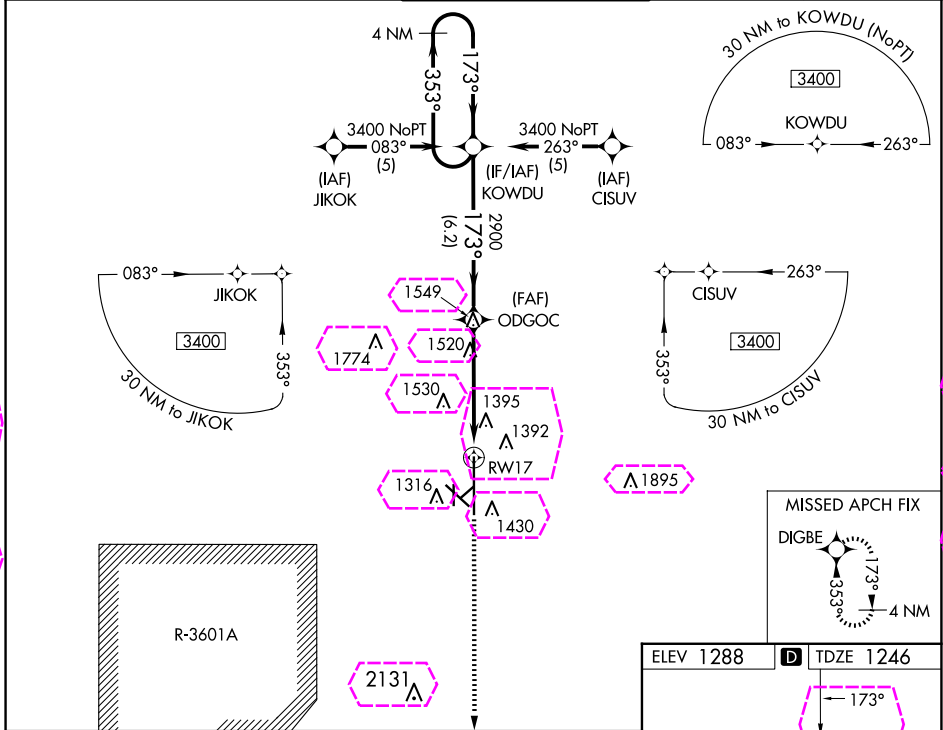
WAAS CH <b>70322</b> <b>W17A</b>	APP CRS <b>173°</b>	Rwy Ldg <b>12300</b> TDZE <b>1246</b> Apt Elev <b>1288</b>
--	------------------------	--

# RNAV (GPS) RWY 17

SALINA RGNL (SLN)

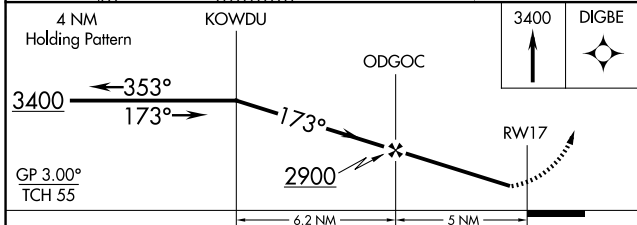
DME/DME RNP-0.3 NA. Baro-VNAV NA below -17°C (2°F). Circling NA for Cat D southwest of Rwy 12-30. Inoperative table does not apply.	MALS 	MISSED APPROACH: Climb to 3400 direct DIGBE and hold.
---	----------	---

ATIS <b>120.15</b>	KANSAS CITY CENTER <b>134.9 363.2</b>	SALINA TOWER ★ <b>119.3 (CTAF) 257.7</b>	GND CON <b>121.9 360.8</b>	UNICOM <b>122.95</b>
-----------------------	--	---	-------------------------------	-------------------------

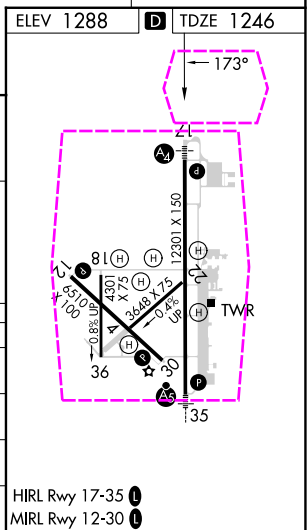


NC-2, 30 OCT 2025 to 27 NOV 2025

NC-2, 30 OCT 2025 to 27 NOV 2025



CATEGORY	A	B	C	D
LPV DA	1496-1		250 (300-1)	
LNAV/VNAV DA	1741-1¾		495 (500-1¾)	
LNAV MDA	1780-1	534 (500-1)	1780-1½ 534 (500-1½)	1780-1¾ 534 (500-1¾)
CIRCLING	1820-1¾ 532 (600-1¾)	1840-1¾ 552 (600-1¾)	1860-1¾ 572 (600-1¾)	1860-2 572 (600-2)



SALINA, KANSAS  
Orig-A 20MAY21

38°47'N-97°39'W

# RNAV (GPS) RWY 17

SALINA RGNL (SLN)

SALINA, KANSAS

AL-362 (FAA)

25331

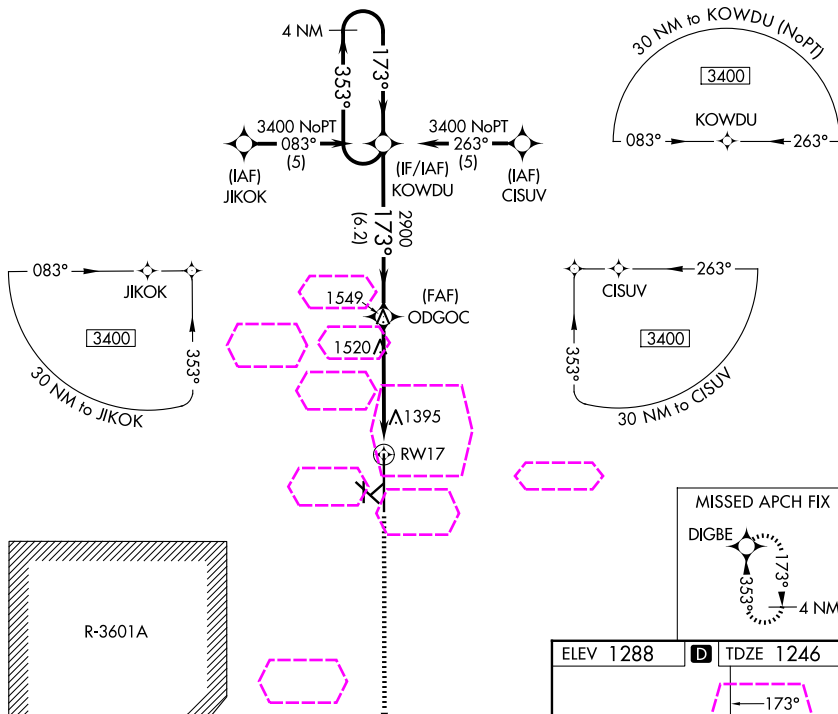
WAAS CH <b>70322</b> <b>W17A</b>	APP CRS <b>173°</b>	Rwy Ldg <b>12300</b> TDZE <b>1246</b> Apt Elev <b>1288</b>
--	------------------------	--

# RNAV (GPS) RWY 17

SALINA RGNL (SLN)

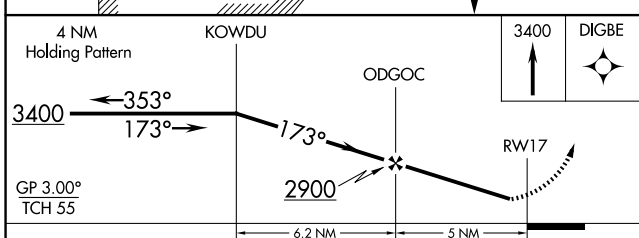
DME/DME RNP-0.3 NA. Baro-VNAV NA below -17°C (2°F). Circling NA for Cat D southwest of Rwy 12-30. Inoperative table does not apply.	MALS 	MISSED APPROACH: Climb to 3400 direct DIGBE and hold.
---	----------	---

ATIS <b>120.15</b>	KANSAS CITY CENTER <b>134.9 363.2</b>	SALINA TOWER ★ <b>119.3 (CTAF) 257.7</b>	GND CON <b>121.9 360.8</b>	UNICOM <b>122.95</b>
-----------------------	--	---	-------------------------------	-------------------------



NC-2, 27 NOV 2025 to 25 DEC 2025

NC-2, 27 NOV 2025 to 25 DEC 2025



ELEV 1288	<b>D</b> TDZE 1246
-----------	--------------------

CATEGORY	A	B	C	D
LPV DA	1496-1 250 (300-1)			
LNAV/VNAV DA	1741-1¼ 495 (500-1¼)			
LNAV MDA	1780-1 534 (500-1)	1780-1½ 534 (500-1½)	1780-1¾ 534 (500-1¾)	
CIRCLING	1820-1¼ 532 (600-1¼)	1840-1¼ 552 (600-1¼)	1860-1¼ 572 (600-1¼)	1860-2 572 (600-2)

HIRL Rwy 17-35   
MIRL Rwy 12-30

SALINA, KANSAS  
Orig-A 20MAY21

38°47'N-97°39'W

# RNAV (GPS) RWY 17

SALINA RGNL (SLN)