

SALINA, KANSAS

AL-362 (FAA)

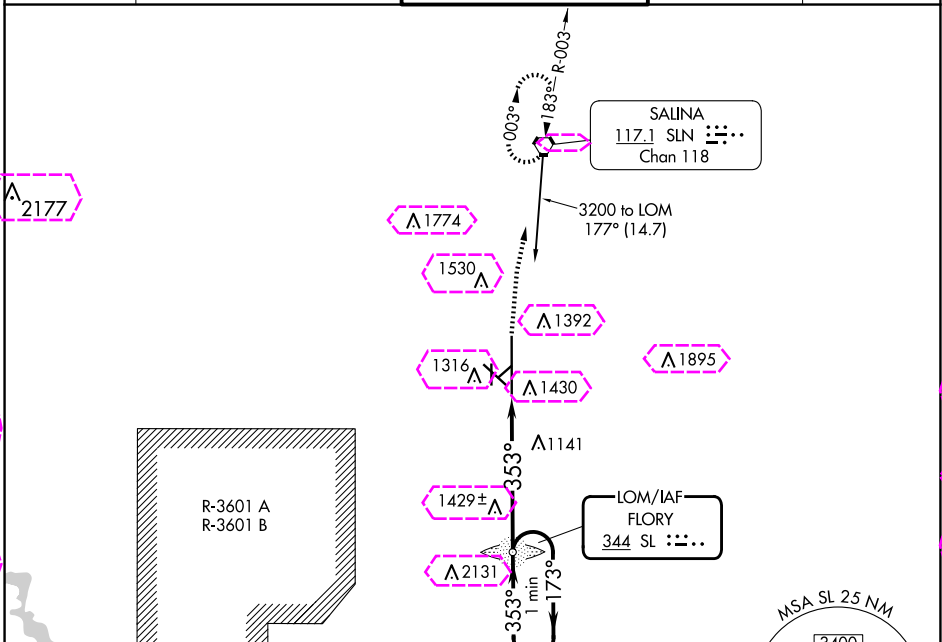
25163

LOM SL <b>344</b>	APP CRS <b>353°</b>	Rwy Ldg TDZE <b>12300</b> <b>1271</b>	Apt Elev <b>1288</b>
----------------------	------------------------	---	-------------------------

# NDB RWY 35

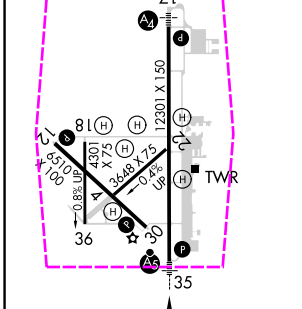
SALINA RGNL (SLN)

<p><b>▼</b> Cat D Circling NA southwest of runway 12-30. For inop ALS, increase S-35 Cats A/B visibility to 1 SM and Cats C/D to 1½ SM.</p>	MALSR	MISSED APPROACH: Climb to 3000 direct SLN VORTAC and hold.
	<p>ATIS <b>120.15</b></p>	<p>KANSAS CITY CENTER <b>134.9 363.2</b></p>
<p>GND CON <b>121.9 360.8</b></p>		<p>UNICOM <b>122.95</b></p>

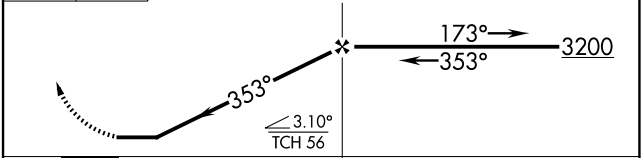


ELEV 1288	<b>D</b>	TDZE 1271
-----------	----------	-----------

HIRL Rwy 17-35  
MIRL Rwy 12-30



3000	SLN	VGSI and descent angles not coincident (VGSI Angle 3.00/TCH 48).
↑	⬡	



CATEGORY	A	B	C	D
S-35	1760-¾	489 (500-¾)	1760-1 489 (500-1)	1760-1¼ 489 (500-1¼)
CIRCLING	1820-1 532 (600-1)	1840-1 552 (600-1)	1860-1½ 572 (600-½)	1860-2 572 (600-2)

FAF to MAP 5.7 NM					
Knots	60	90	120	150	180
Min:Sec	5:42	3:48	2:51	2:17	1:54

SALINA, KANSAS  
Amdt 17C 20MAY21

38°47'N-97°39'W

SALINA RGNL (SLN)  
**NDB RWY 35**

NC-2. 30 OCT 2025 to 27 NOV 2025

NC-2. 30 OCT 2025 to 27 NOV 2025

SALINA, KANSAS

AL-362 (FAA)


25331

LOM SL <b>344</b>	APP CRS <b>353°</b>	Rwy Ldg TDZE <b>12300</b> <b>1271</b> Apt Elev <b>1288</b>
----------------------	------------------------	--

# NDB RWY 35

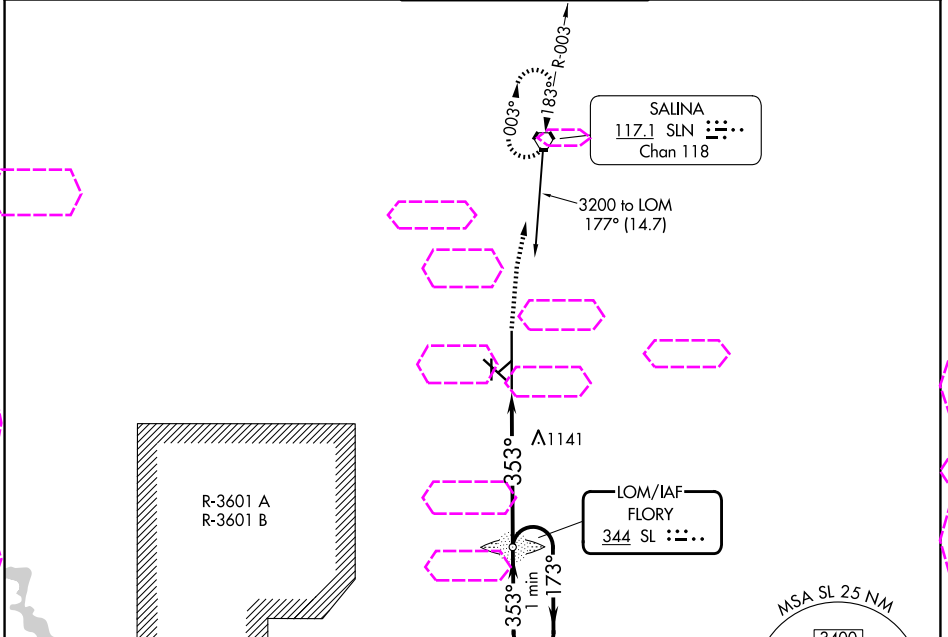
SALINA RGNL (SLN)

**⚠** Cat D Circling NA southwest of runway 12-30. For inop ALS, increase S-35 Cats A/B visibility to 1 SM and Cats C/D to 1½ SM.

**MALS** 

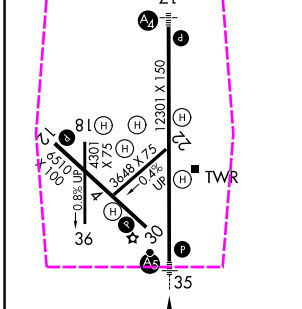
**MISSED APPROACH:** Climb to 3000 direct SLN VORTAC and hold.


ATIS <b>120.15</b>	KANSAS CITY CENTER <b>134.9 363.2</b>	SALINA TOWER ★ <b>119.3 (CTAF) 1257.7</b>	GND CON <b>121.9 360.8</b>	UNICOM <b>122.95</b>
-----------------------	--	--	-------------------------------	-------------------------



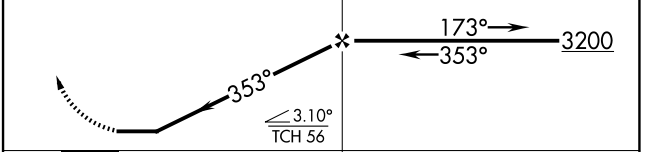
ELEV 1288	<b>D</b>	TDZE 1271
-----------	----------	-----------

HIRL Rwy 17-35   
MIRL Rwy 12-30 



3000 SLN  VGSI and descent angles not coincident (VGSI Angle 3.00/TCH 48).

One Minute Holding Pattern



CATEGORY	A	B	C	D
S-35	1760-¾	489 (500-¾)	1760-1 489 (500-1)	1760-1¼ 489 (500-1¼)
CIRCLING	1820-1 532 (600-1)	1840-1 552 (600-1)	1860-1½ 572 (600-1½)	1860-2 572 (600-2)

FAF to MAP 5.7 NM					
Knots	60	90	120	150	180
Min:Sec	5:42	3:48	2:51	2:17	1:54

SALINA, KANSAS

Amdt 17C 20MAY21

38°47'N-97°39'W

# NDB RWY 35

SALINA RGNL (SLN)

NC-2, 127 NOV 2025 to 25 DEC 2025

NC-2, 27 NOV 2025 to 25 DEC 2025