

SALINA, KANSAS

AL-362 (FAA)

25331

LOC I-SLN 108.9	APP CRS 353°	Rwy Ldg 12300
		TDZE 1271
		Apt Elev 1288

ILS or LOC RWY 35

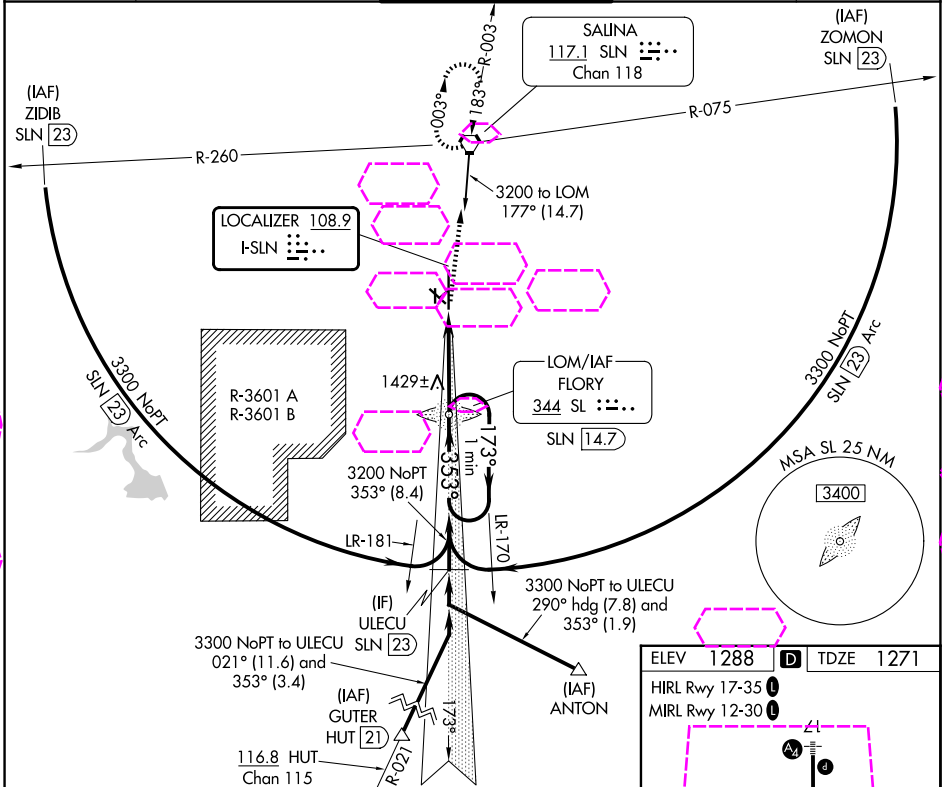
SALINA RGNL (SLN)

⚠ For inop ALS, increase S-LOC 35 Cat D visibility to 1 1/4 SM and Cat E visibility to 1 1/2 SM. For inop ALS, increase S-ILS 35 Cat E visibility to 3/4 SM. Circling NA for Cats D and E southwest of Rwy 12-30.



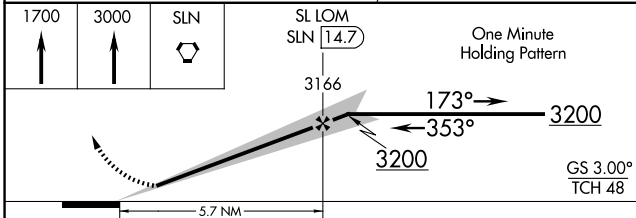
MISSED APPROACH: Climb to 1700 then climb to 3000 direct SLN VORTAC and hold.

ATIS 120.15	KANSAS CITY CENTER 134.9 363.2	SALINA TOWER ★ 119.3 (CTAF) 257.7	GND CON 121.9 360.8	UNICOM 122.95
-----------------------	--	---	-------------------------------	-------------------------



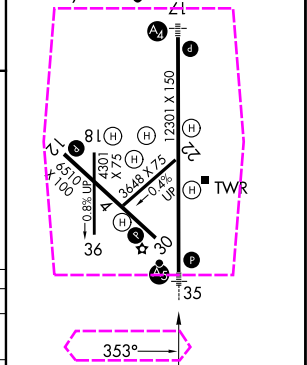
NC-2, 27 NOV 2025 to 25 DEC 2025

NC-2, 27 NOV 2025 to 25 DEC 2025



ELEV 1288	D	TDZE 1271
-----------	---	-----------

HIRL Rwy 17-35
MIRL Rwy 12-30



CATEGORY	A	B	C	D	E
S-ILS 35	1471-1/2 200 (200-1/2)				
S-LOC 35	1680-1/2 409 (400-1/2)				
CIRCLING	1820-1 532 (600-1)	1840-1 552 (600-1)	1860-1 1/2 572 (600-1 1/2)	1860-2 572 (600-2)	1920-2 1/4 632 (700-2 1/4)

FAF to MAP 5.7 NM					
Knots	60	90	120	150	180
Min:Sec	5:42	3:48	2:51	2:17	1:54

SALINA, KANSAS

Amdt 19C 20MAY21

38°47'N-97°39'W

SALINA RGNL (SLN)

ILS or LOC RWY 35