

PORTLAND, MAINE

AL-329 (FAA)

24305

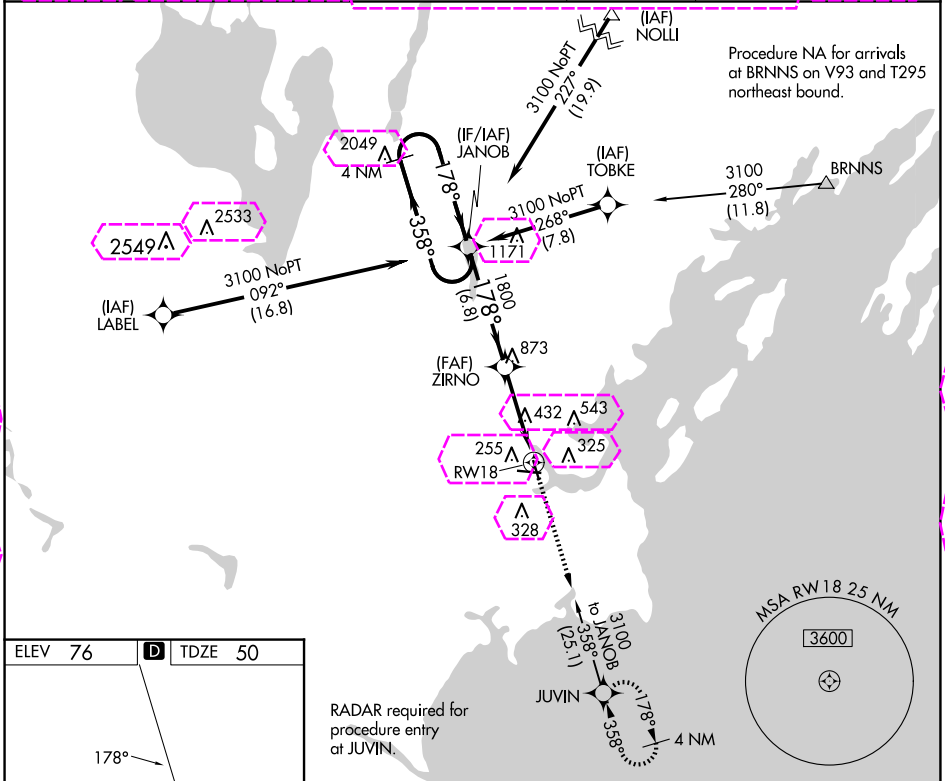
WAAS CH 77925 W18A	APP CRS 178°	Rwy Idg TDZE: 50 Apt Elev 76
--	------------------------	--

RNAV (GPS) RWY 18

PORTLAND INTL JETPORT (PWM)

RNP APCH.	MISSED APPROACH: Climb to 3100 direct JUVIN and hold, continue climb-in-hold to 3100.
<p>▼ For uncompensated Baro-VNAV systems, LNAV/VNAV NA below -19°C (-2°F) or above 54°C (130°F). Rwy 18 helicopter visibility reduction below ¾ SM NA.</p>	

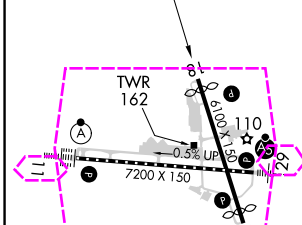
ATIS 119.05	PORTLAND APP CON ★ 119.75 269.35	PORTLAND TOWER ★ 120.9 (CTAF) 257.8	GND CON 121.9	CLNC DEL 121.9	UNICOM 122.95
-----------------------	--	--	-------------------------	--------------------------	-------------------------



NE-1, 30 OCT 2025 to 27 NOV 2025

NE-1, 30 OCT 2025 to 27 NOV 2025

ELEV 76	D	TDZE 50
---------	----------	---------

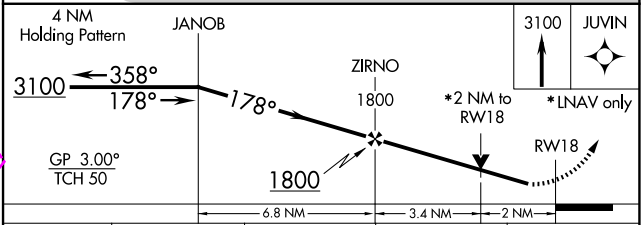


TDZ/CL Rwy 11 (1)

MIRL Rwy 18-36 (1)

HIRL Rwy 11-29 (1)

REIL Rwy 18 and 36 (1)



CATEGORY	A	B	C	D
LPV DA		300-¾	250 (300-¾)	
LNAV/VNAV DA		477-1⅓	427 (500-1⅓)	
LNAV MDA	740-1	690 (700-1)	740-2	690 (700-2)
CIRCLING	740-1	664 (700-1)	740-2	860-2½ 784 (800-2½)

PORTLAND, MAINE
Amdt 2A 16JUL20

43°39'N-70°19'W

PORTLAND INTL JETPORT (PWM)
RNAV (GPS) RWY 18

PORTLAND, MAINE

AL-329 (FAA)

25331

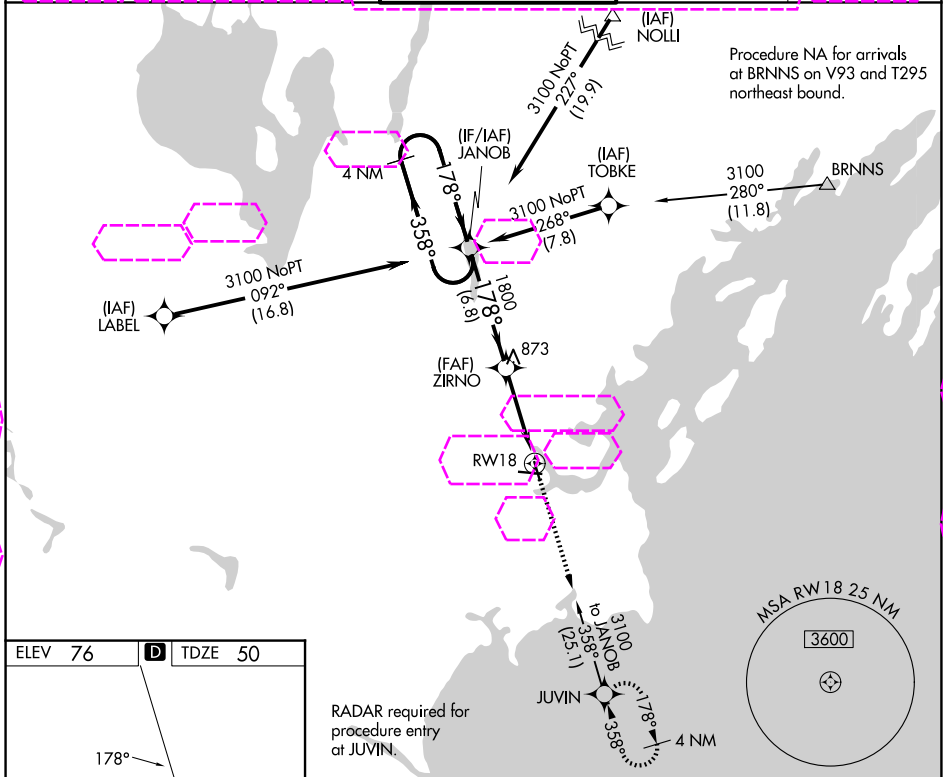
WAAS CH 77925 W18A	APP CRS 178°	Rwy Ldg TDZE Apt Elev	5150 50 76
--	------------------------	-----------------------------	---------------------------------------

RNAV (GPS) RWY 18

PORTLAND INTL JETPORT (PWM)

RNP APCH.	<p>▼ For uncompensated Baro-VNAV systems, LNAV/VNAV NA below -19°C (-2°F) or above 54°C (130°F). Rwy 18 helicopter visibility reduction below ¾ SM NA.</p>	<p>MISSED APPROACH: Climb to 3100 direct JUVIN and hold, continue climb-in-hold to 3100.</p>
-----------	--	--

<p>ATIS 119.05</p>	<p>PORTLAND APP CON ★ 119.75 269.35</p>	<p>PORTLAND TOWER ★ 120.9 (CTAF) 257.8</p>	<p>GND CON 121.9</p>	<p>UNICOM 122.95</p>
-------------------------------	--	--	---------------------------------	---------------------------------



ELEV 76	D	TDZE 50
---------	----------	---------

178°

3100

TWR

RCL

RCLS

0.5% UP

7200 X 150

36

TDZL/RCLS Rwy 11

MIRL Rwy 18-36

HIRL Rwy 11-29

REIL Rwy 18 and 36

RADAR required for procedure entry at JUVIN.

4 NM Holding Pattern	JANOB	ZIRNO	JUVIN
3100	178°	1800	3100
GP 3.00° TCH 50	178°	1800	3100
	6.8 NM	3.4 NM	2 NM
CATEGORY	A	B	C
LPV DA	300-¾	250 (300-¾)	
LNAV/VNAV DA	477-1⅓	427 (500-1⅓)	
LNAV MDA	740-1	690 (700-1)	740-2
			690 (700-2)
CIRCLING	740-1	664 (700-1)	740-2
			860-2½
			784 (800-2½)

*2 NM to RWY 18

*LNAV only

RWY 18

PORTLAND, MAINE
Amdt 2A 16JUL20

43°39'N-70°19'W

PORTLAND INTL JETPORT (PWM)
RNAV (GPS) RWY 18

NE-1, 27 NOV 2025 to 25 DEC 2025

NE-1, 27 NOV 2025 to 25 DEC 2025