

PORTLAND, MAINE

AL-329 (FAA)

24305

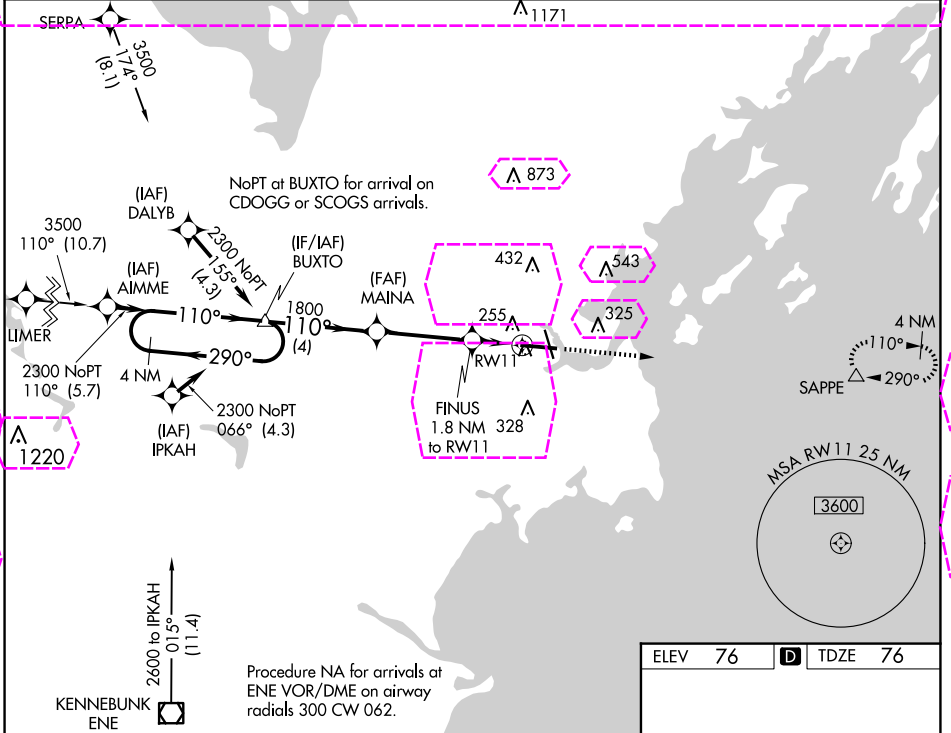
WAAS CH 70306 W11A	APP CRS 110°	Rwy Idg 7200	TDZE 76	Apt Elev 76
--	------------------------	------------------------	-------------------	-----------------------

RNAV (GPS) RWY 11

PORTLAND INTL JETPORT (PWM)

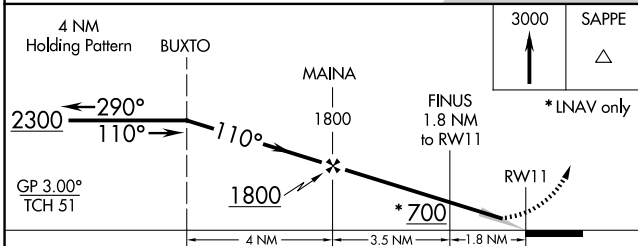
RNP APCH - GPS.	ALSF-2	MISSED APPROACH: Climb to 3000 direct SAPPE and hold, continue climb-in-hold to 3000.
▼ For uncompensated Baro-VNAV systems, LNAV/VNAV NA below -18°C or above 54°C.	⚠	

ATIS 119.05	PORTLAND APP CON ★ 119.75 269.35	PORTLAND TOWER ★ 120.9 0 (CTAF) 257.8	GND CON 121.9	CLNC DEL 121.9	UNICOM 122.95
-----------------------	--	---	-------------------------	--------------------------	-------------------------

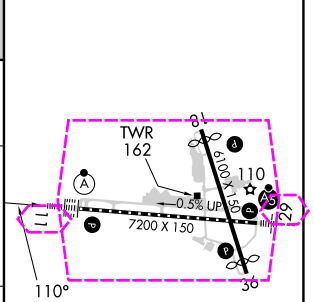


NE-1, 30 OCT 2025 to 27 NOV 2025

NE-1, 30 OCT 2025 to 27 NOV 2025



ELEV 76	D	TDZE 76
---------	---	---------



CATEGORY	A	B	C	D
LPV DA		276/18	200 (200-½)	
LNAV/VNAV DA		456/40	380 (400-¾)	
LNAV MDA	520/24	444 (500-½)	520/45	444 (500-¾)
CIRCLING	620-1 544 (600-1)	640-1 564 (600-1)	740-1¾ 664 (700-1¾)	860-2½ 784 (800-2½)

TDZ/CL Rwy 11	⓪
MIRL Rwy 18-36	⓪
HIRL Rwy 11-29	⓪
REIL Rwy 18 and 36	⓪

PORTLAND, MAINE
Amdt 4C 07SEP23

43°39'N-70°19'W

PORTLAND INTL JETPORT (PWM)
RNAV (GPS) RWY 11

PORTLAND, MAINE

AL-329 (FAA)

25331

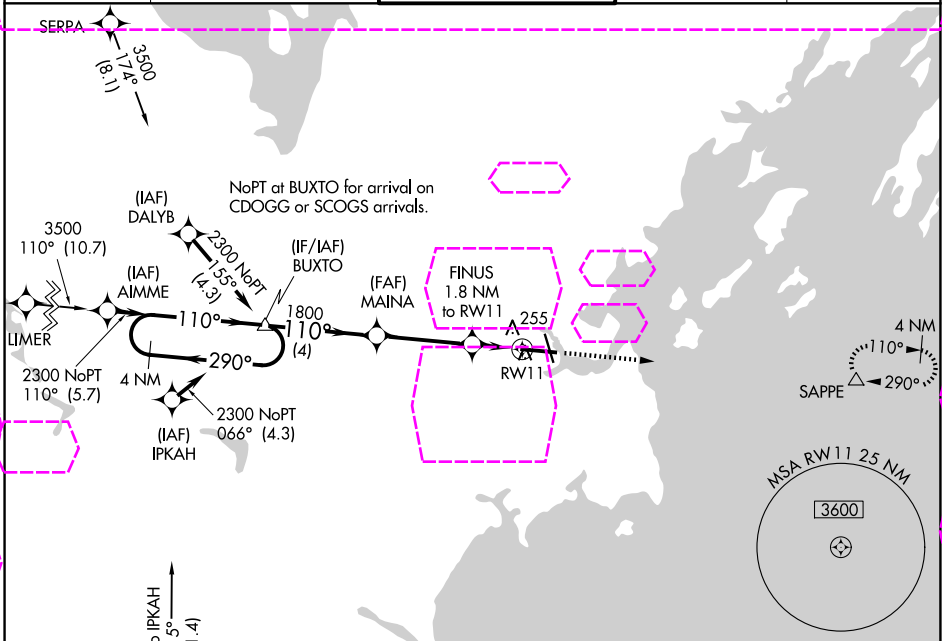
WAAS CH 70306 W11A	APP CRS 110°	Rwy Ldg TDZE Apt Elev	7200 76 76
--	------------------------	-----------------------------	---------------------------------------

RNAV (GPS) RWY 11

PORTLAND INTL JETPORT (PWM)

RNP APCH - GPS.	ALSF-2	MISSED APPROACH: Climb to 3000 direct SAPPE and hold, continue climb-in-hold to 3000.
▼ For uncompensated Baro-VNAV systems, LNAV/VNAV NA below -18°C or above 54°C.	Ⓜ	

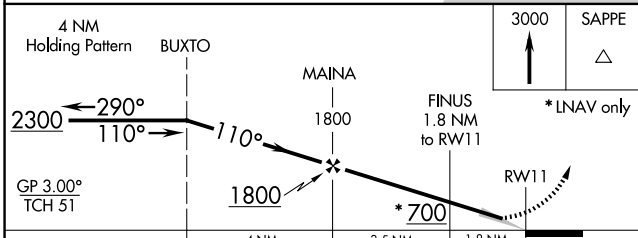
ATIS 119.05	PORTLAND APP CON * 119.75 269.35	PORTLAND TOWER * 120.9 (CTAF) 257.8	GND CON 121.9	UNICOM 122.95
-----------------------	--	--	-------------------------	-------------------------



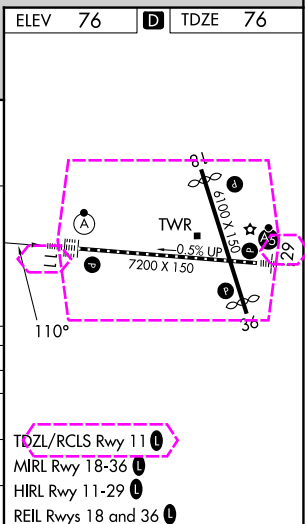
NE-1, 27 NOV 2025 to 25 DEC 2025

NE-1, 27 NOV 2025 to 25 DEC 2025

ELEV 76	D	TDZE 76
---------	---	---------



CATEGORY	A	B	C	D
LPV DA		276/18	200 (200-½)	
LNAV/VNAV DA		456/40	380 (400-¾)	
LNAV MDA	520/24	444 (500-½)	520/45	444 (500-¾)
CIRCLING	620-1 544 (600-1)	640-1 564 (600-1)	740-1¾ 664 (700-1¾)	860-2½ 784 (800-2½)



- TDZL/RCLS Rwy 11
- MRL Rwy 18-36
- HIRL Rwy 11-29
- REIL Rws 18 and 36

PORTLAND, MAINE
Amdt 4C 07SEP23

43°39'N-70°19'W

PORTLAND INTL JETPORT (PWM)
RNAV (GPS) RWY 11