

PORTLAND, MAINE

AL-329 (FAA)

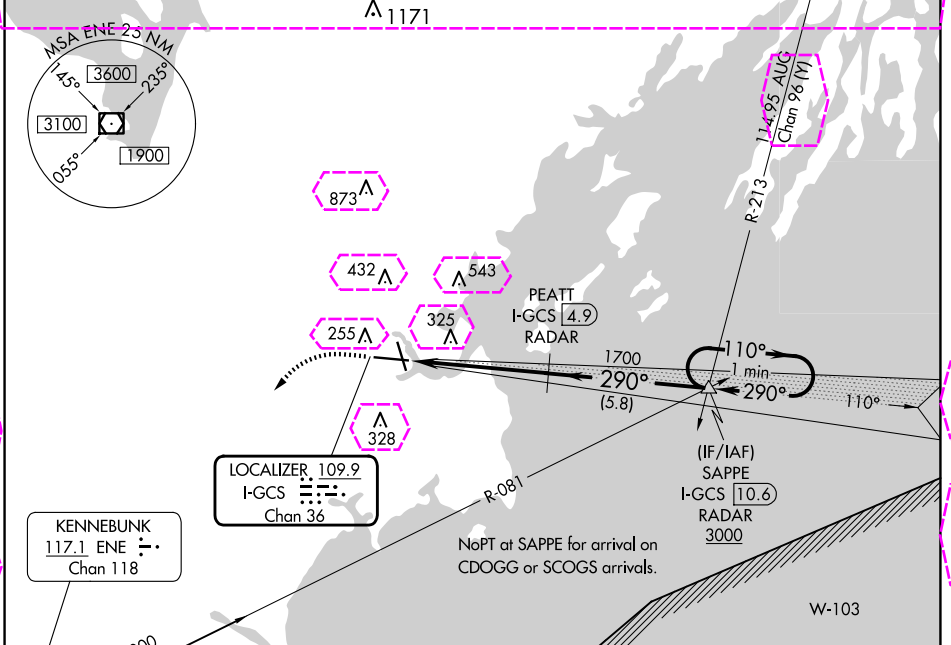
24305

LOC/DME I-GCS <b>109.9</b> Chan 36	APP CRS <b>290°</b>	Rwy Idg <b>7200</b> TDZE <b>56</b> Apt Elev <b>76</b>
--	------------------------	---

# ILS or LOC RWY 29

PORTLAND INTL JETPORT (P<sup>W</sup>M)

<b>⚠</b> **RVR 1800 authorized with use of FD or AP or HUD to DA. DME or RADAR required.			MALSR 	MISSED APPROACH: Climb to 700 then climbing left turn to 3000 direct ENE VOR/DME and hold.	
ATIS <b>119.05</b>	PORTLAND APP CON * <b>119.75 269.35</b>	PORTLAND TOWER * <b>120.9</b> (CTAF) <b>257.8</b>	GND CON <b>121.9</b>	CLNC DEL <b>121.9</b>	UNICOM <b>122.95</b>

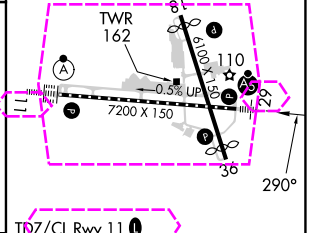
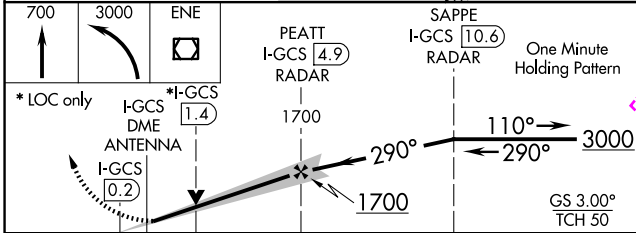


NE-1, 30 OCT 2025 to 27 NOV 2025

NE-1, 30 OCT 2025 to 27 NOV 2025



ELEV 76	<b>D</b>	TDZE 56
---------	----------	---------



CATEGORY	A	B	C	D
S-ILS 29**	256/24 200 (200-½)			
S-LOC 29	580/24 544 (600-1)	524 (600-½)	580/55 664 (700-1¾)	524 (600-1) 784 (800-2½)
<b>CIRCLING</b>	620-1 544 (600-1)	640-1 564 (600-1)	740-1¾ 664 (700-1¾)	860-2½ 784 (800-2½)

TDZ/CL Rwy 11	1
MIRL Rwy 18-36	1
HIRL Rwy 11-29	1
REIL Rws 18 and 36	1
FAF to MAP 5.1 NM	
Knots	60 90 120 150 180
Min:Sec	5:06 3:24 2:33 2:02 1:42

PORTLAND, MAINE  
Amdt 4A 16JUL20

43°39'N-70°19'W

PORTLAND INTL JETPORT (P<sup>W</sup>M)  
**ILS or LOC RWY 29**

PORTLAND, MAINE

AL-329 (FAA)

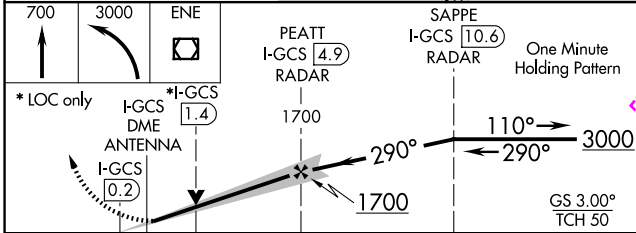
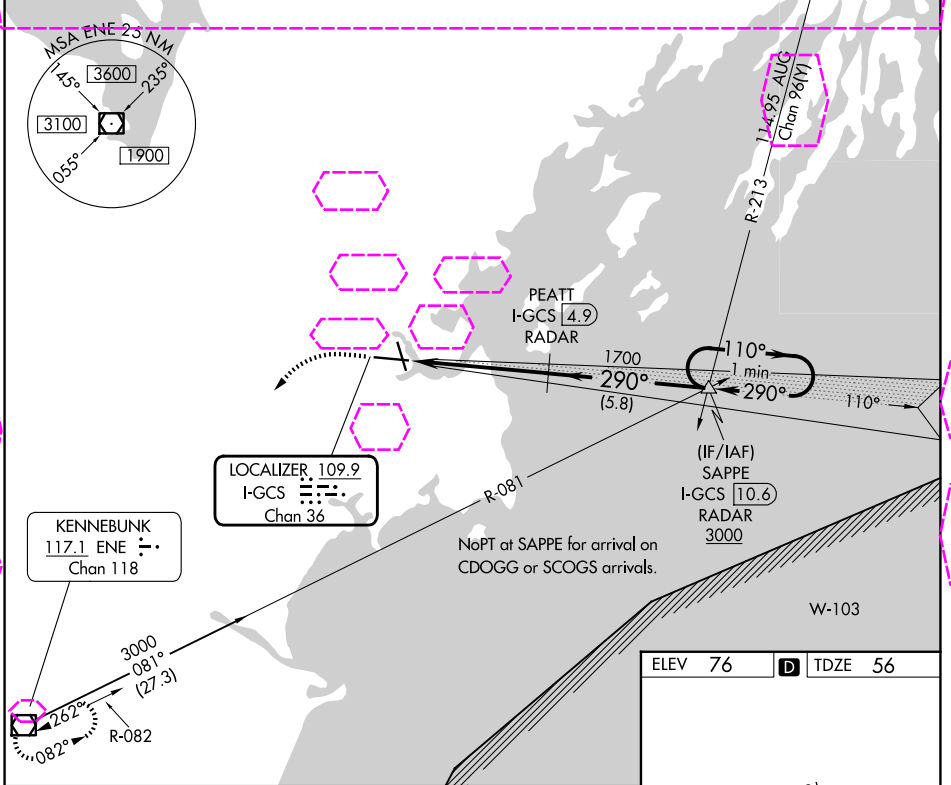
25331

LOC/DME I-GCS <b>109.9</b> Chan <b>36</b>	APP CRS <b>290°</b>	Rwy Ldg <b>7200</b> TDZE <b>56</b> Apt Elev <b>76</b>
---	------------------------	---

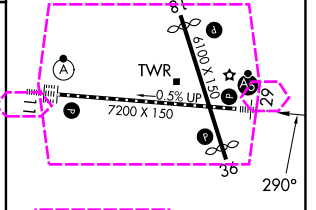
# ILS or LOC RWY 29

PORTLAND INTL JETPORT (P<sup>W</sup>M)

<b>⚠</b> **RVR 1800 authorized with use of FD or AP or HUD to DA. DME or RADAR required.	<b>MALSR</b> 	<b>MISSED APPROACH:</b> Climb to 700 then climbing left turn to 3000 direct ENE VOR/DME and hold.		
<b>ATIS</b> <b>119.05</b>	<b>PORTLAND APP CON *</b> <b>119.75 269.35</b>	<b>PORTLAND TOWER *</b> <b>120.9 (CTAF) 257.8</b>	<b>GND CON</b> <b>121.9</b>	<b>UNICOM</b> <b>122.95</b>



ELEV 76	<b>D</b>	TDZE 56
---------	----------	---------



CATEGORY	A	B	C	D
S-ILS 29**	256/24 200 (200-½)			
S-LOC 29	580/24 544 (600-½)	580/55 524 (600-1)		
<b>CIRCLING</b>	620-1 544 (600-1)	640-1 564 (600-1)	740-1¾ 664 (700-1¾)	860-2½ 784 (800-2½)
FAF to MAP 5.1 NM				
Knots	60	90	120	150 180
Min:Sec	5:06	3:24	2:33	2:02 1:42

PORTLAND, MAINE  
Amdt 4A 16JUL20

43°39'N-70°19'W

PORTLAND INTL JETPORT (P<sup>W</sup>M)  
**ILS or LOC RWY 29**

NE-1, 27 NOV 2025 to 25 DEC 2025

NE-1, 27 NOV 2025 to 25 DEC 2025