

PORTLAND, MAINE

AL-329 (FAA)

24305

LOC/DME I-PWM 109.9 Chan 36	APP CRS 110°	Rwy Idg 7200 TDZE 76 Apt Elev 76
---	------------------------	---

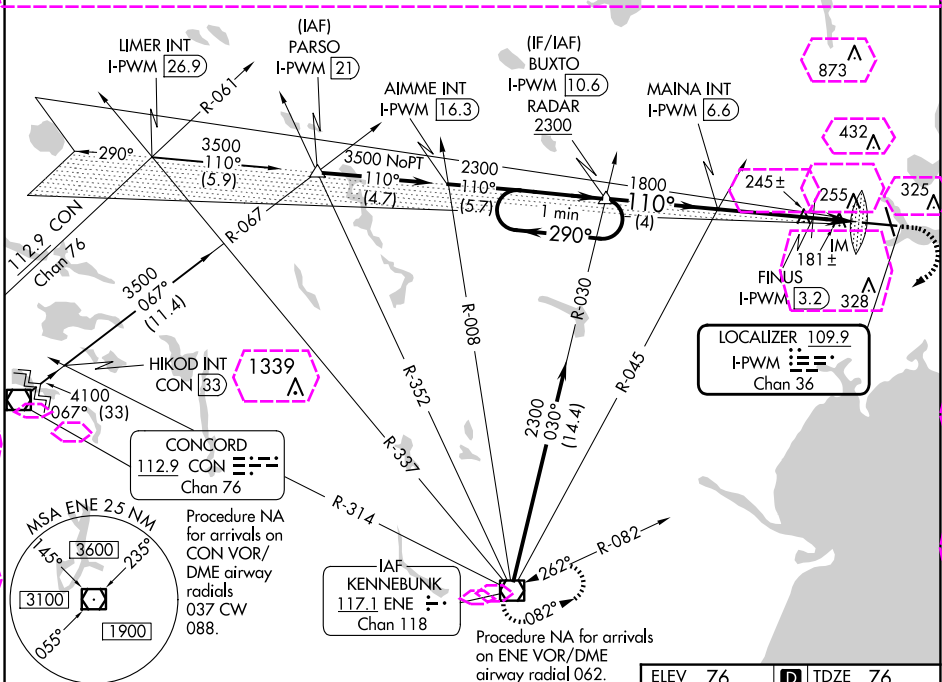
ILS or LOC RWY 11

PORTLAND INTL JETPORT (PWM)

⚠ For inoperative ALSF-2, increase S-LOC 11 Cat C/D visibility to 1 1/2 mile. Increase FINUS fix minimums S-LOC 11 Cat C/D visibility to RVR 5500.

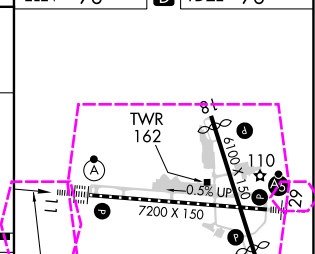
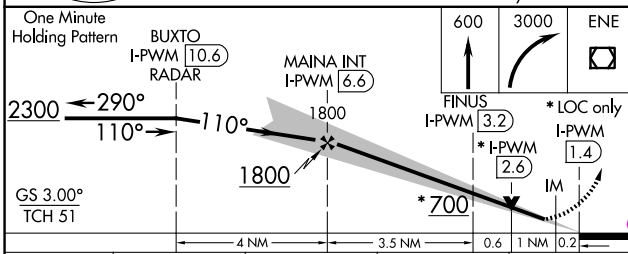
ALSF-2 **(A)** MISSED APPROACH: Climb to 600 then climbing right turn to 3000 direct ENE VOR/DME and hold.

ATIS 119.05	PORTLAND APP CON * 119.75 269.35	PORTLAND TOWER * 120.9 (CTAF) 257.8	GND CON 121.9	CLNC DEL 121.9	UNICOM 122.95
-----------------------	--	---	-------------------------	--------------------------	-------------------------



NE-1, 30 OCT 2025 to 27 NOV 2025

NE-1, 30 OCT 2025 to 27 NOV 2025



CATEGORY	A	B	C	D
S-ILS 11	276/18 200 (200-1/2)			
S-LOC 11	700/24	624 (700-1/2)	700-1 3/8	624 (700-1 3/8)
(C) CIRCLING	700-1	624 (700-1)	740-1 3/4	860-2 1/2
FINUS FIX MINIMUMS				
S-LOC 11	440/24	364 (400-1/2)	440/35	364 (400-3/8)
(C) CIRCLING	620-1 544 (600-1)	640-1 564 (600-1)	740-1 3/4 664 (700-1/4)	860-2 1/2 784 (800-2 1/2)

FAF to MAP 5.3 NM					
Knots	60	90	120	150	180
Min:Sec	5:18	3:32	2:39	2:07	1:46

TDZ/CL Rwy 11
MIRL Rwy 18-36
HIRL Rwy 11-29
REIL Rws 18 and 36

PORTLAND, MAINE
Amdt 4B 16JUL20

43°39'N-70°19'W

PORTLAND INTL JETPORT (PWM)

ILS or LOC RWY 11

PORTLAND, MAINE

AL-329 (FAA)

25331

LOC/DME I-PWM 109.9 Chan 36	APP CRS 110°	Rwy Ldg 7200 TDZE 76 Apt Elev 76
---	------------------------	---

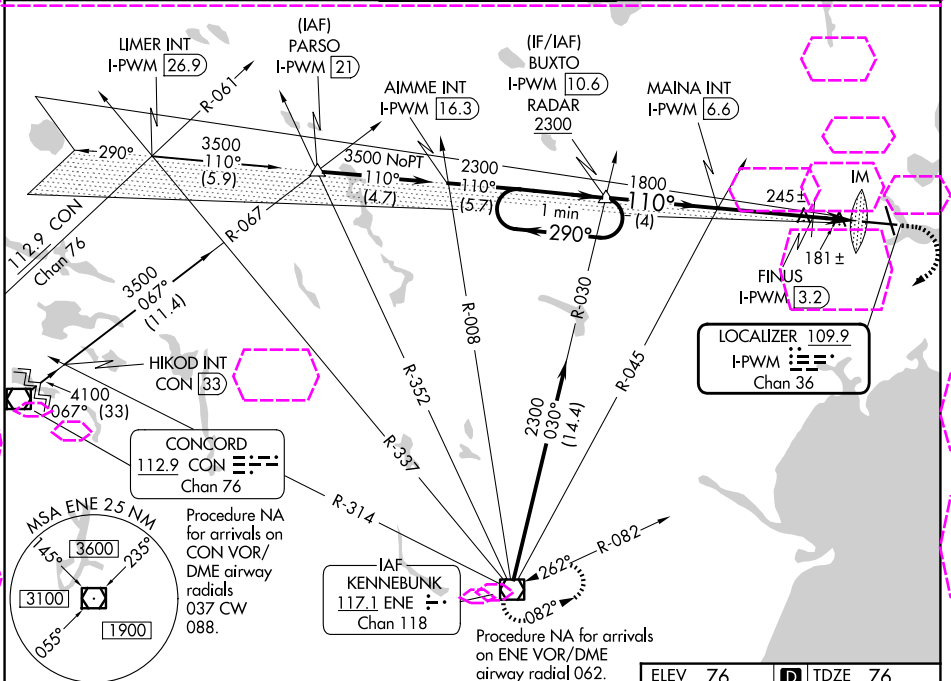
ILS or LOC RWY 11

PORTLAND INTL JETPORT (PWM)

⚠ For inoperative ALSF-2, increase S-LOC 11 Cat C/D visibility to 1 1/2 mile. Increase FINUS fix minimums S-LOC 11 Cat C/D visibility to RVR 5500.

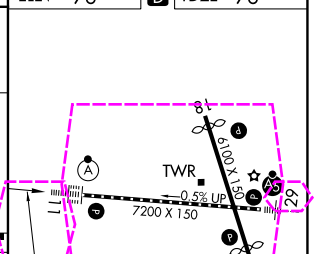
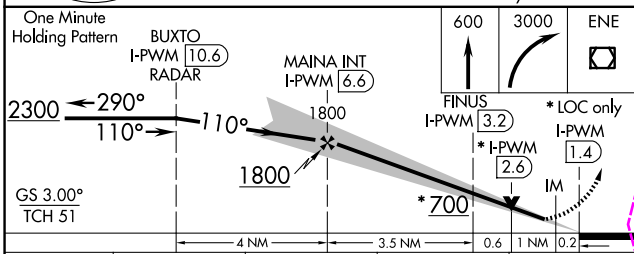
ALSF-2 **(A)** MISSED APPROACH: Climb to 600 then climbing right turn to 3000 direct ENE VOR/DME and hold.

ATIS 119.05	PORTLAND APP CON ★ 119.75 269.35	PORTLAND TOWER ★ 120.9 (CTAF) 257.8	GND CON 121.9	UNICOM 122.95
-----------------------	--	---	-------------------------	-------------------------



NE-1, 27 NOV 2025 to 25 DEC 2025

NE-1, 27 NOV 2025 to 25 DEC 2025



CATEGORY	A	B	C	D
S-ILS 11	276/18 200 (200-1/2)			
S-LOC 11	700/24	624 (700-1/2)	700-1 3/8	624 (700-1 3/8)
CIRCLING	700-1	624 (700-1)	740-1 3/4	860-2 1/2
FINUS FIX MINIMUMS				
S-LOC 11	440/24	364 (400-1/2)	440/35	364 (400-3/8)
CIRCLING	620-1 544 (600-1)	640-1 564 (600-1)	740-1 3/4 664 (700-1/4)	860-2 1/2 784 (800-2 1/2)

ELEV 76	D TDZE 76
FAF to MAP 5.3 NM	
Knots	60 90 120 150 180
Min:Sec	5:18 3:32 2:39 2:07 1:46

- TDZL/RCLS Rwy 11
- MIRL Rwy 18-36
- HIRL Rwy 11-29
- REIL Rws 18 and 36

PORTLAND, MAINE
Amdt 4B 16JUL20

43°39'N-70°19'W

PORTLAND INTL JETPORT (PWM)

ILS or LOC RWY 11