

PORTLAND, MAINE

AL-329 (FAA)


24305

LOC/DME I-GCS 109.9 Chan 36	APP CRS 290°	Rwy Idg 7200 TDZE 56 Apt Elev 76
---	------------------------	---

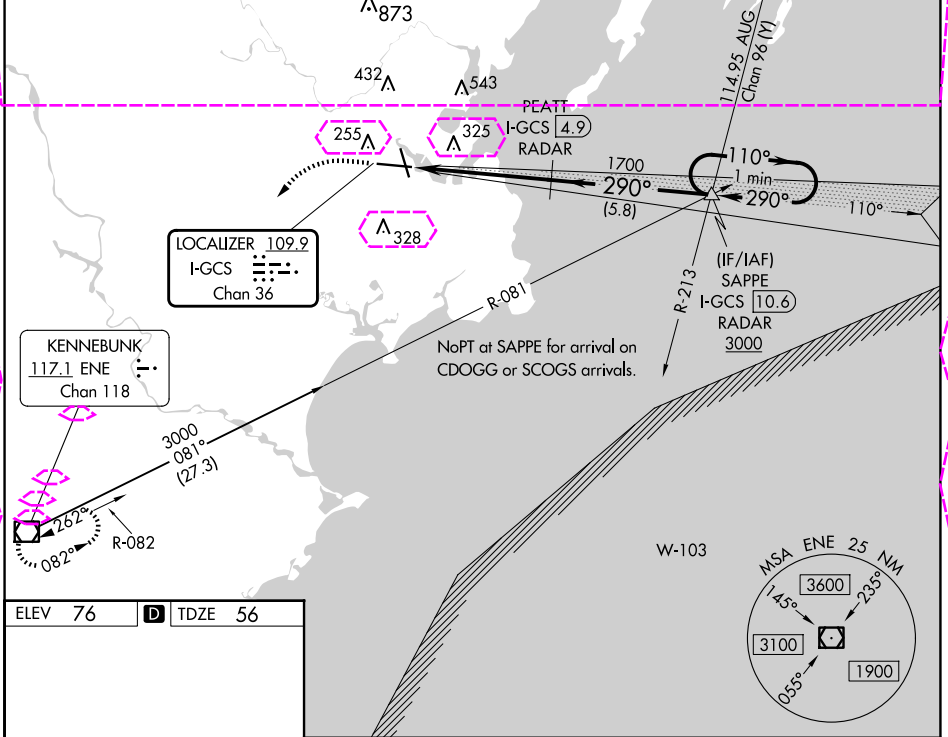
ILS RWY 29 (SA CAT I & II)

PORTLAND INTL JETPORT (PWM)

⚠ DME or RADAR required. DME required when Portland approach control closed. Procedure NA when control tower closed.
 SA CAT I: Requires specific OPSPEC, MSPEC, or LOA approval and use of HUD to DH.
 SA CAT II: Reduced lighting requires specific OPSPEC, MSPEC, or LOA approval and use of Autoland or HUD to touchdown.

MALSR  MISSED APPROACH: Climb to 700 then climbing left turn to 3000 direct ENE VOR/DME and hold.

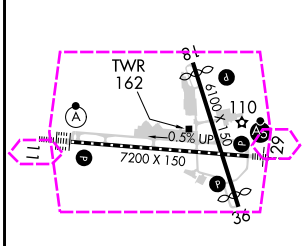
ATIS 119.05	PORTLAND APP CON ★ 119.75 269.35	PORTLAND TOWER ★ 120.9 (CTAF) 257.8	GND CON 121.9	CLNC DEL 121.9	UNICOM 122.95
-----------------------	--	--	-------------------------	--------------------------	-------------------------



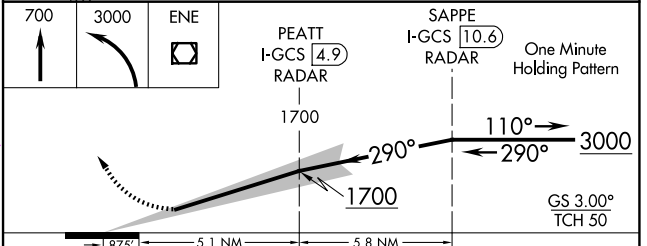
NE-1, 30 OCT 2025 to 27 NOV 2025

NE-1, 30 OCT 2025 to 27 NOV 2025

ELEV 76	D	TDZE 56
---------	----------	---------



- TDZ/CL Rwy 11 **Ⓛ**
- MIRL Rwy 18-36 **Ⓛ**
- HIRL Rwy 11-29 **Ⓛ**
- REIL Rws 18 and 36 **Ⓛ**



CATEGORY	A	B	C	D
S-ILS 29	SA CAT I	RA 206/14	150 DA 206	
S-ILS 29	SA CAT II	RA 146/12	100 DA 156	

SA CATEGORY I & II ILS - SPECIAL AIRCREW & AIRCRAFT CERTIFICATION REQUIRED

PORTLAND, MAINE
Amdt 4A 16JUL20

43°39'N-70°19'W

PORTLAND INTL JETPORT (PWM)
ILS RWY 29 (SA CAT I & II)

PORTLAND, MAINE

AL-329 (FAA)

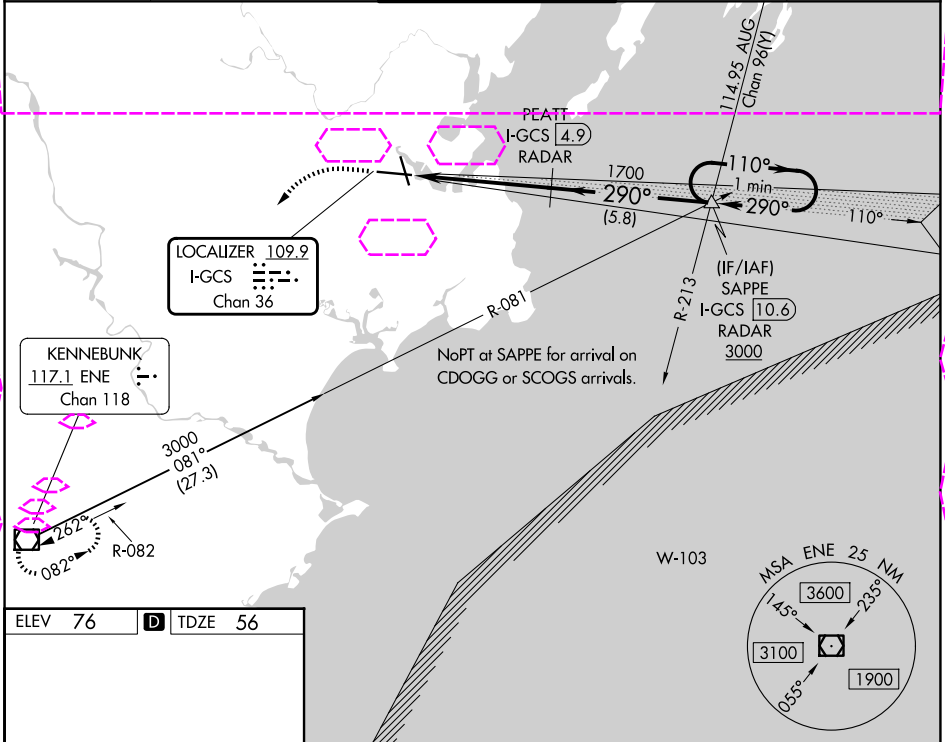
25331

LOC/DME I-GCS 109.9 Chan 36	APP CRS 290°	Rwy Ldg 7200 TDZE 56 Apt Elev 76
---	------------------------	---

ILS RWY 29 (SA CAT I & II)

PORTLAND INTL JETPORT (PWM)

<p>⚠ DME or RADAR required. DME required when Portland approach control closed. Procedure NA when control tower closed.</p> <p>SA CAT I: Requires specific OPSPEC, MSPEC, or LOA approval and use of HUD to DH.</p> <p>SA CAT II: Reduced lighting requires specific OPSPEC, MSPEC, or LOA approval and use of Autoland or HUD to touchdown.</p>	<p>MALSR</p>	<p>MISSED APPROACH: Climb to 700 then climbing left turn to 3000 direct ENE VOR/DME and hold.</p>		
		<p>ATIS 119.05</p>	<p>PORTLAND APP CON ★ 119.75 269.35</p>	<p>PORTLAND TOWER★ 120.9 0 (CTAF) 257.8</p>



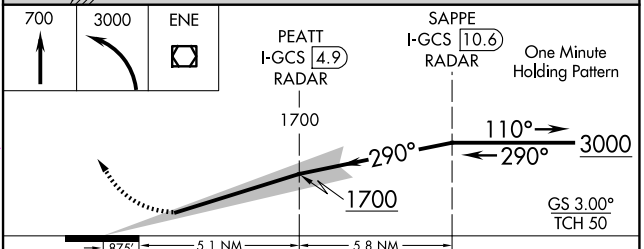
ELEV 76	D	TDZE 56
---------	----------	---------

TDZL/RCLS Rwy 11

MIRL Rwy 18-36

HIRL Rwy 11-29

REIL Rwy 18 and 36



CATEGORY	A	B	C	D
S-ILS 29	SA CAT I	RA 206/14	150 DA 206	
S-ILS 29	SA CAT II	RA 146/12	100 DA 156	

SA CATEGORY I & II ILS - SPECIAL AIRCREW & AIRCRAFT CERTIFICATION REQUIRED

PORTLAND, MAINE
Amdt 4A 16JUL20

43°39'N-70°19'W

PORTLAND INTL JETPORT (PWM)
ILS RWY 29 (SA CAT I & II)

NE-1, 27 NOV 2025 to 25 DEC 2025

NE-1, 27 NOV 2025 to 25 DEC 2025