

PORTLAND, MAINE

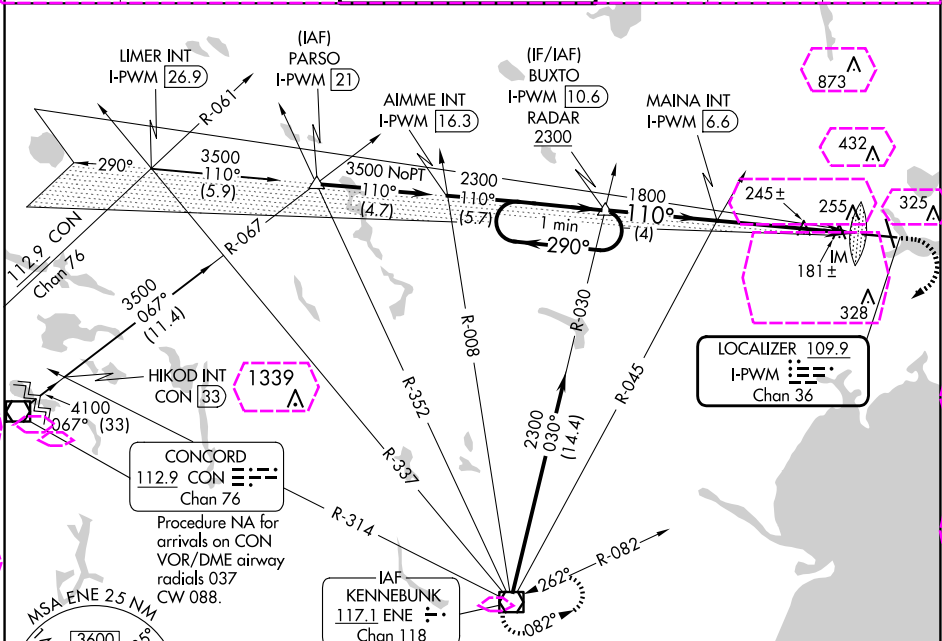
AL-329 (FAA)

24305

LOC/DME I-PWM 109.9 Chan 36	APP CRS 110°	Rwy Idg 7200 TDZE 76 Apt Elev 76
---	------------------------	---

ILS RWY 11 (SA CAT I)
PORTLAND INTL JETPORT (PWM)

<p>Procedure NA when control tower closed. Requires specific OPSPEC, MSPEC, or LOA approval and use of HUD to DH.</p>	ALSIF-2	<p>MISSED APPROACH: Climb to 600 then climbing right turn to 3000 direct ENE VOR/DME and hold.</p>			
			<p>ATIS 119.05</p>	<p>PORTLAND APP CON * 119.75 269.35</p>	<p>PORTLAND TOWER * 120.9 (CTAF) 257.8</p>

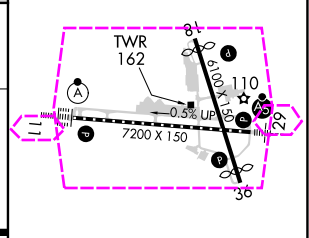
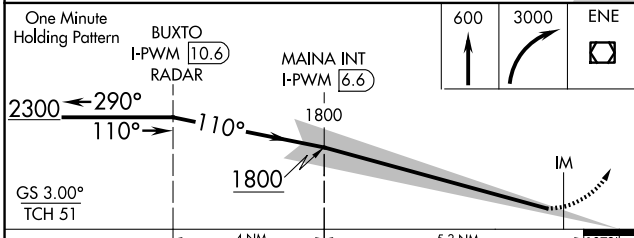


NE-1, 30 OCT 2025 to 27 NOV 2025

NE-1, 30 OCT 2025 to 27 NOV 2025



ELEV 76	TDZE 76
---------	---------



CATEGORY	A	B	C	D
S-ILS 11	RA 166/14		150 DA 226	

TDZ/CL Rwy 11	
MIRL Rwy 18-36	
HIRL Rwy 11-29	
REIL Rwy 18 and 36	

SA CATEGORY I ILS - SPECIAL AIRCREW & AIRCRAFT CERTIFICATION REQUIRED

PORTLAND, MAINE
Amdt 4B 16JUL20

43°39'N-70°19'W

PORTLAND INTL JETPORT (PWM)
ILS RWY 11 (SA CAT I)

PORTLAND, MAINE

AL-329 (FAA)

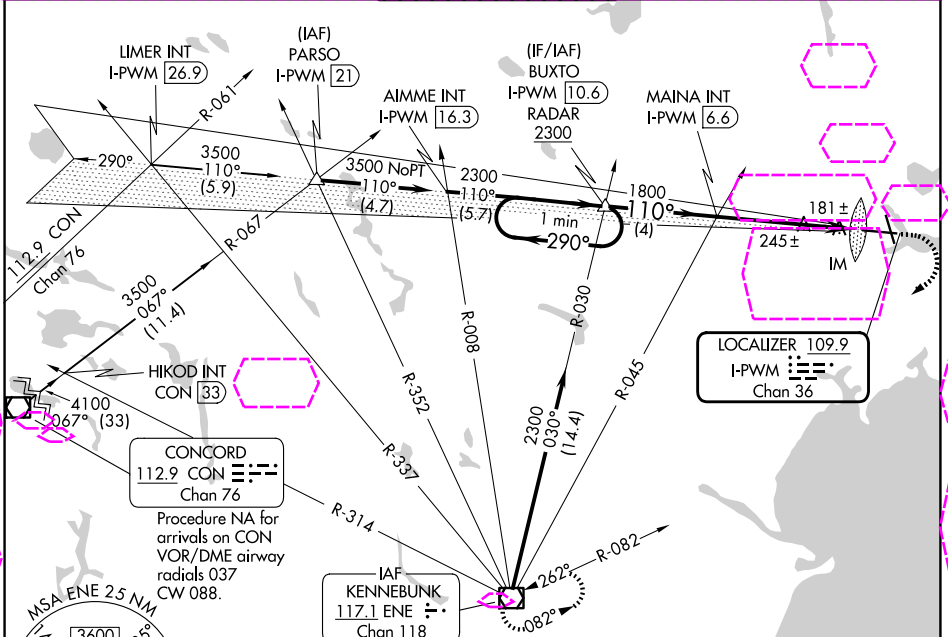
25331

LOC/DME I-PWM 109.9 Chan 36	APP CRS 110°	Rwy Ldg 7200 TDZE 76 Apt Elev 76
---	------------------------	---

ILS RWY 11 (SA CAT I)

PORTLAND INTL JETPORT (PWM)

<p>Procedure NA when control tower closed. Requires specific OPSPEC, MSPEC, or LOA approval and use of HUD to DH.</p>	ALSIF-2	MISSED APPROACH: Climb to 600 then climbing right turn to 3000 direct ENE VOR/DME and hold.			
	<table border="1"> <tr> <td>ATIS 119.05</td> <td>PORTLAND APP CON * 119.75 269.35</td> <td>PORTLAND TOWER * 120.9 (CTAF) 257.8</td> <td>GND CON 121.9</td> <td>UNICOM 122.95</td> </tr> </table>	ATIS 119.05	PORTLAND APP CON * 119.75 269.35	PORTLAND TOWER * 120.9 (CTAF) 257.8	GND CON 121.9
ATIS 119.05	PORTLAND APP CON * 119.75 269.35	PORTLAND TOWER * 120.9 (CTAF) 257.8	GND CON 121.9	UNICOM 122.95	

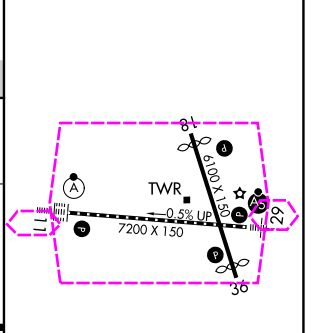


NE-1, 27 NOV 2025 to 25 DEC 2025

NE-1, 27 NOV 2025 to 25 DEC 2025



ELEV 76	D TDZE 76
---------	-----------



One Minute Holding Pattern	BUXTO I-PWM [10.6] RADAR	MAINA INT I-PWM [6.6]		
2300 ← 290°	110° →	1800		
GS 3.00° TCH 51		IM		
	4 NM	5.3 NM		
CATEGORY	A	B	C	D
S-ILS 11	RA 166/14		150 DA 226	

SA CATEGORY I ILS - SPECIAL AIRCREW & AIRCRAFT CERTIFICATION REQUIRED

- TDZL/RCLS Rwy 11
- MIRL Rwy 18-36
- HIRL Rwy 11-29
- REIL Rwy 18 and 36

PORTLAND, MAINE
Amdt 4B 16JUL20

43°39'N-70°19'W

PORTLAND INTL JETPORT (PWM)
ILS RWY 11 (SA CAT I)