

PORTLAND, MAINE

AL-329 (FAA)

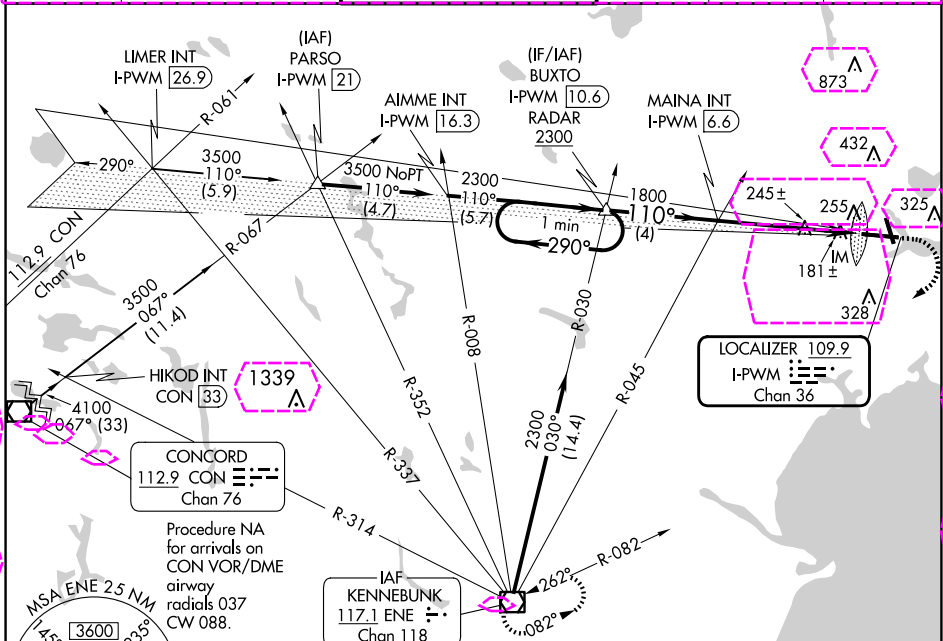
24305

LOC/DME I-PWM 109.9 Chan 36	APP CRS 110°	Rwy Idg 7200 TDZE 76 Apt Elev 76
---	------------------------	---

ILS RWY 11 (CAT II & III)

PORTLAND INTL JETPORT (PWM)

Procedure NA when control tower closed.		ALSF-2 	MISSED APPROACH: Climb to 600 then climbing right turn to 3000 direct ENE VOR/DME and hold.		
ATIS 119.05	PORTLAND APP CON * 119.75 269.35	PORTLAND TOWER * 120.9 (CTAF) 257.8	GND CON 121.9	CLNC DEL 121.9	UNICOM 122.95

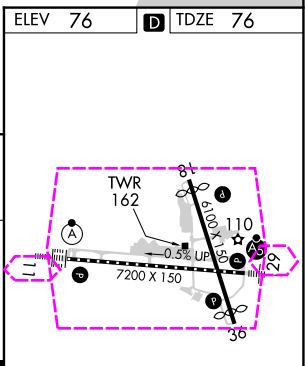
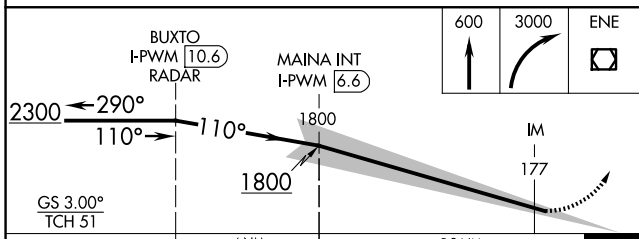


NE-1, 30 OCT 2025 to 27 NOV 2025

NE-1, 30 OCT 2025 to 27 NOV 2025

ELEV 76	TDZE 76
---------	---------

Procedure NA for arrivals on ENE VOR/DME airway radial 062.



CATEGORY	A	B	C	D
S-ILS 11	CAT II RA 108/12 100 DA 176			
S-ILS 11	CAT III RVR 06			

CATEGORY II & III ILS-SPECIAL AIRCREW & AIRCRAFT CERTIFICATION REQUIRED

TDZ/CL Rwy 11	⓪
MIRL Rwy 18-36	⓪
HIRL Rwy 11-29	⓪
REIL Rwy 18 and 36	⓪

PORTLAND, MAINE
Amdt 4B 16JUL20

43°39'N-70°19'W

PORTLAND INTL JETPORT (PWM)
ILS RWY 11 (CAT II & III)

PORTLAND, MAINE

AL-329 (FAA)

25331

LOC/DME I-PWM 109.9 Chan 36	APP CRS 110°	Rwy Ldg 7200 TDZE 76 Apt Elev 76
---	------------------------	---

ILS RWY 11 (CAT II & III)

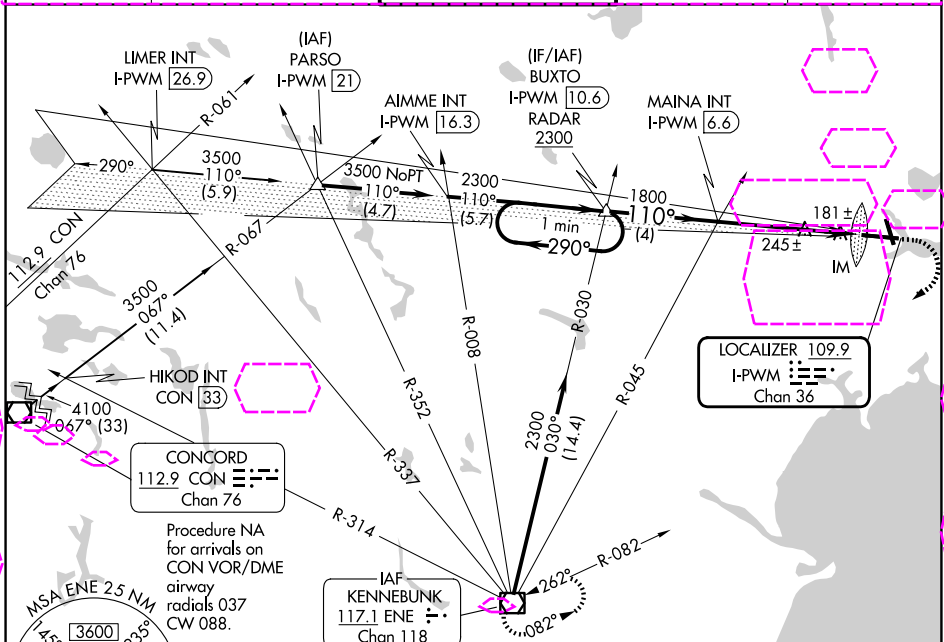
PORTLAND INTL JETPORT (PWM)

Procedure NA when control tower closed.

ALSIF-2

MISSED APPROACH: Climb to 600 then climbing right turn to 3000 direct ENE VOR/DME and hold.

ATIS 119.05	PORTLAND APP CON * 119.75 269.35	PORTLAND TOWER * 120.9 (CTAF) 257.8	GND CON 121.9	UNICOM 122.95
-----------------------	--	--	-------------------------	-------------------------



NE-1, 27 NOV 2025 to 25 DEC 2025

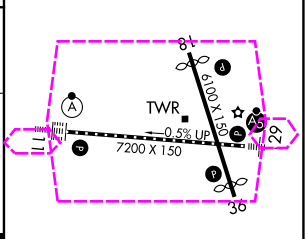
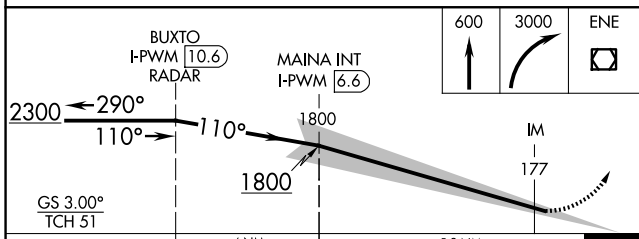
NE-1, 27 NOV 2025 to 25 DEC 2025

MSA ENE 25 NM

3600, 3100, 1900

Procedure NA for arrivals on ENE VOR/DME airway radial 062.

ELEV 76	TDZE 76
---------	---------



CATEGORY	A	B	C	D
S-ILS 11	CAT II RA 108/12 100 DA 176			
S-ILS 11	CAT III RVR 06			

TDZL/RCLS Rwy 11

MIRL Rwy 18-36

HIRL Rwy 11-29

REIL Rwy 18 and 36

CATEGORY II & III ILS-SPECIAL AIRCREW & AIRCRAFT CERTIFICATION REQUIRED

PORTLAND, MAINE
Amdt 4B 16JUL20

43°39'N-70°19'W

PORTLAND INTL JETPORT (PWM)
ILS RWY 11 (CAT II & III)