

PIERRE, SOUTH DAKOTA

AL-324 (FAA)

25107

WAAS CH 45804 W07A	APP CRS 069°	Rwy Idg 6880 TDZE 1744 Apt Elev 1744
--	------------------------	---

RNAV (GPS) RWY 7

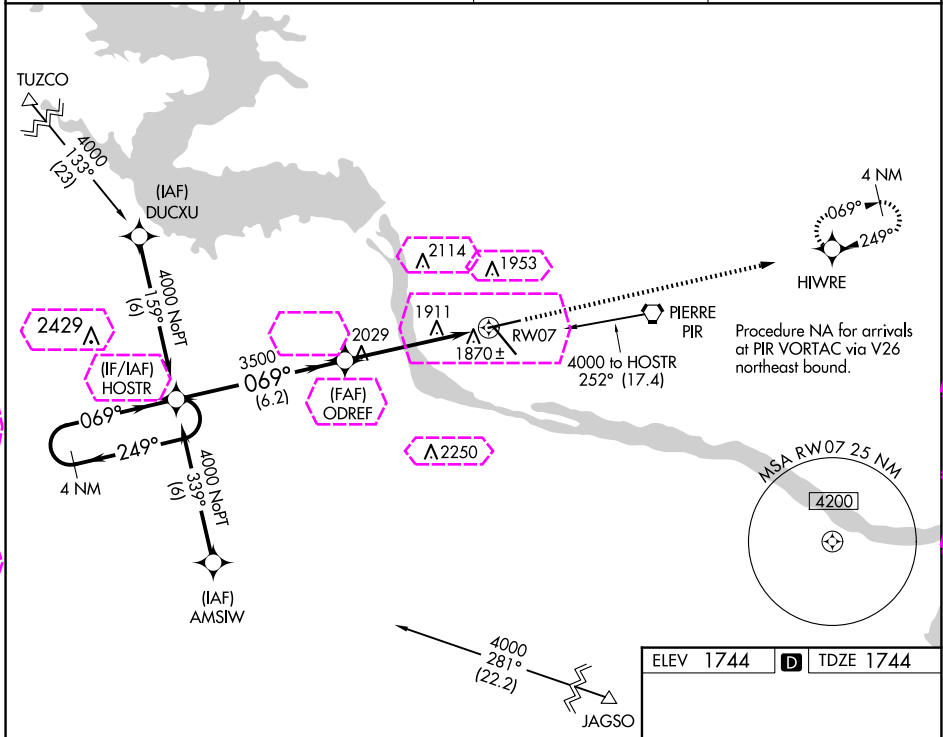
PIERRE RGNL (PIR)

RNP APCH - GPS.

▼ For uncompensated Baro-VNAV systems, LNAV/VNAV NA below -18°C or above 45°C. Visibility reduction by helicopters NA.

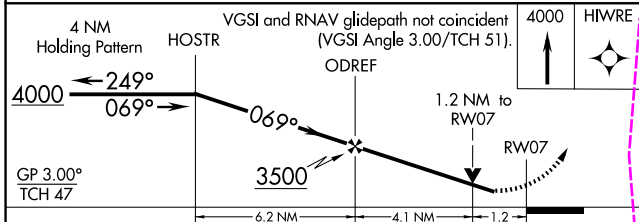
MISSED APPROACH: Climb to 4000 direct HIWRE and hold.

ASOS 119.025	MINNEAPOLIS CENTER 125.1 269.1	CTAF 122.7	UNICOM 122.95
------------------------	--	----------------------	-------------------------

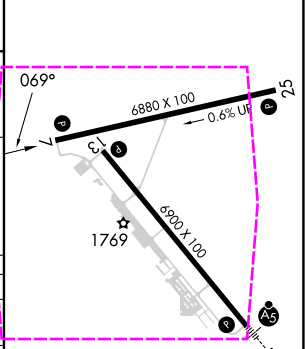


NC-1, 30 OCT 2025 to 27 NOV 2025

NC-1, 30 OCT 2025 to 27 NOV 2025



ELEV 1744	D TDZE 1744
-----------	--------------------



CATEGORY	A	B	C	D
LPV DA	2057-1 313 (400-1)			
LNAV/VNAV DA	2170-1½ 426 (500-1½)			
LNAV MDA	2180-1	436 (500-1)	2180-1¼ 436 (500-1¼)	2180-1½ 436 (500-1½)
C CIRCLING	2240-1 496 (500-1)	2300-1 556 (600-1)	2400-1¾ 656 (700-1¾)	2460-2¼ 716 (800-2¼)

REIL Rwy 7, 13, and 25
HIRL Rwy 7-25 and 13-31

PIERRE, SOUTH DAKOTA
Amdt 2B 31OCT24

44°23'N-100°17'W

PIERRE RGNL (PIR) RNAV (GPS) RWY 7

PIERRE, SOUTH DAKOTA

AL-324 (FAA)

25331

WAAS CH 45804 W07A	APP CRS 069°	Rwy Ldg 6880 TDZE 1744 Apt Elev 1744
--	------------------------	---

RNAV (GPS) RWY 7

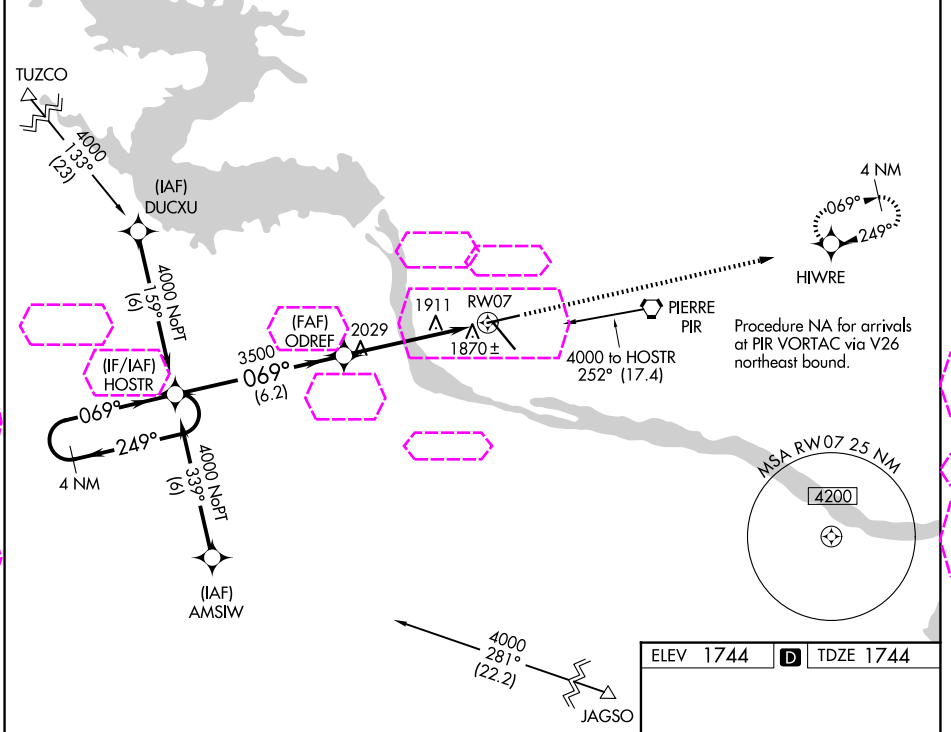
PIERRE RGNL (PIR)

RNP APCH - GPS.

▼ For uncompensated Baro-VNAV systems, LNAV/VNAV NA below -18°C or above 45°C. Visibility reduction by helicopters NA.

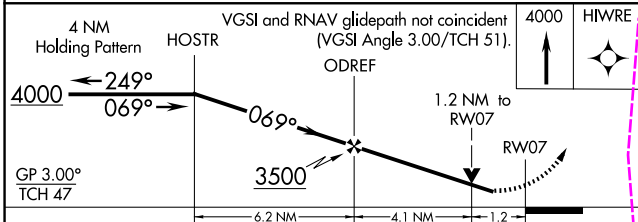
MISSED APPROACH: Climb to 4000 direct HIWRE and hold.

ASOS 119.025	MINNEAPOLIS CENTER 125.1 269.1	CTAF 122.7	UNICOM 122.95
------------------------	--	----------------------	-------------------------

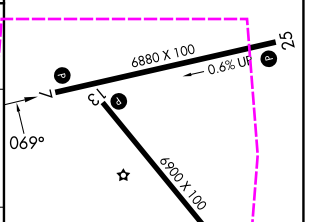


NC-1, 27 NOV 2025 to 25 DEC 2025

NC-1, 27 NOV 2025 to 25 DEC 2025



ELEV 1744	D TDZE 1744
-----------	--------------------



CATEGORY	A	B	C	D
LPV DA	2057-1 313 (400-1)			
LNAV/VNAV DA	2170-1½ 426 (500-1½)			
LNAV MDA	2180-1	436 (500-1)	2180-1¼ 436 (500-1¼)	2180-1½ 436 (500-1½)
CIRCLING	2240-1 496 (500-1)	2300-1 556 (600-1)	2400-1¾ 656 (700-1¾)	2460-2¼ 716 (800-2¼)

REIL Rwy 7, 13, and 25
HIRL Rwy 7-25 and 13-31

PIERRE, SOUTH DAKOTA
Amdt 2B 31OCT24

44°23'N-100°17'W

PIERRE RGNL (PIR) RNAV (GPS) RWY 7