

OLATHE, KANSAS

AL-302 (FAA)


21112

WAAS CH 81807 W36A	APP CRS 356°	Rwy Idg 7339 TDZE 1066 Apt Elev 1087
--	------------------------	---

RNAV (GPS) RWY 36

NEW CENTURY AIRCENTER (IXD)

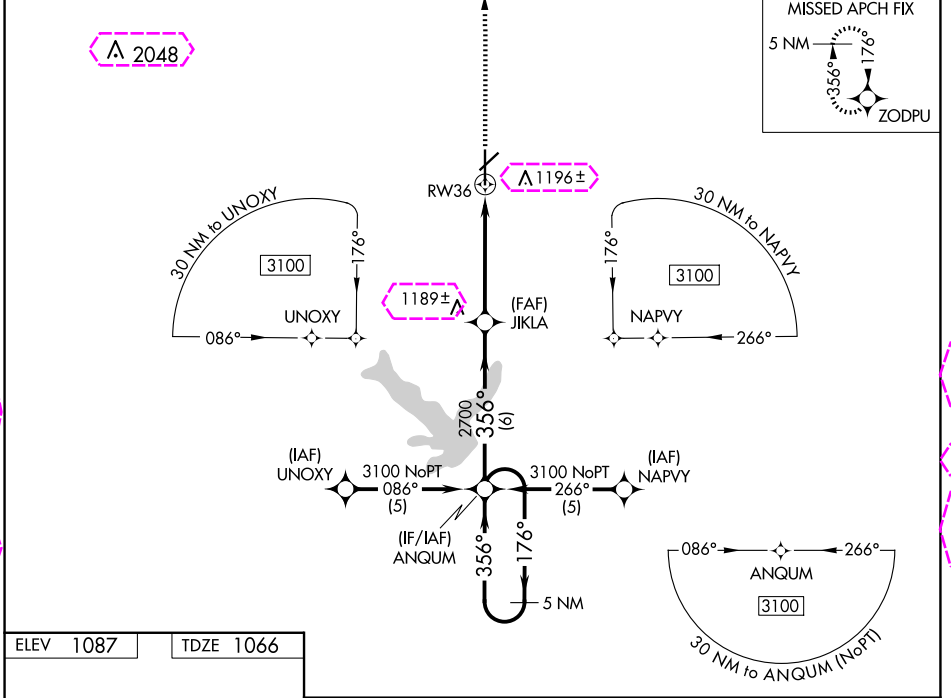
⚠ DME/DME RNP-0.3 NA. For inop MALS, increase LNAV Cat D visibility to 1 1/2 and LPV visibility to 1 all Cats. If local altimeter setting not received, use Johnson County Exec altimeter setting and increase all DA/MDAs 20 feet. VDP NA with Johnson County Exec altimeter setting.

MALS
 MISSED APPROACH: Climb to 3100 direct ZODPU and hold.

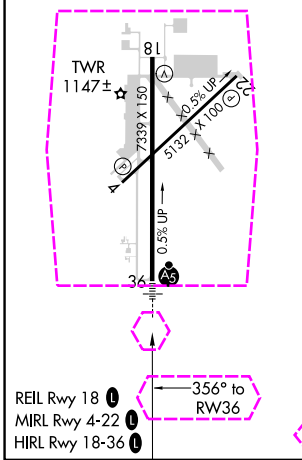
ASOS 135.325	KANSAS CITY APP CON 118.9 251.075	NEW CENTURY TOWER * 133.0 (CTAF) 0	GND CON 124.3	UNICOM 122.95
------------------------	---	--	-------------------------	-------------------------

NC-2, 30 OCT 2025 to 27 NOV 2025

NC-2, 30 OCT 2025 to 27 NOV 2025



ELEV 1087	TDZE 1066
-----------	-----------



5 NM Holding Pattern	ANQUM	JIKLA	3100	ZODPU
GP 3.00° TCH 50	3100 ← 176° → 356°	356°	2700	*1.1 NM to RWY 36
	6 NM	3.9 NM	1.1 NM	
CATEGORY	A	B	C	D
LPV DA	1316-1/2 250 (300-1/2)			
LNAV/VNAV DA	NA			
LNAV MDA	1440-1/2	374 (400-1/2)	1440-1	374 (400-1)
CIRCLING	1560-1	473 (500-1)	1580-1/2 493 (500-1/2)	1640-2 553 (600-2)

OLATHE, KANSAS
Amdt 2A 30JAN20

38°50'N-94°53'W

NEW CENTURY AIRCENTER (IXD) RNAV (GPS) RWY 36

OLATHE, KANSAS

AL-302 (FAA)


25331

WAAS CH 81807 W36A	APP CRS 356°	Rwy Ldg 7339 TDZE 1066 Apt Elev 1087
--	------------------------	---

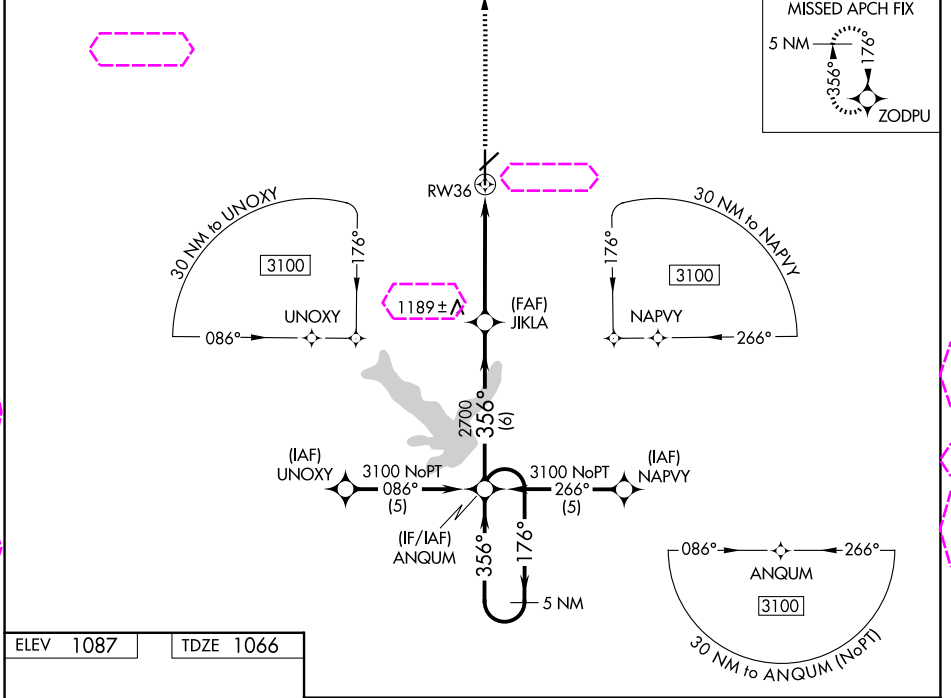
RNAV (GPS) RWY 36

NEW CENTURY AIRCENTER (IXD)

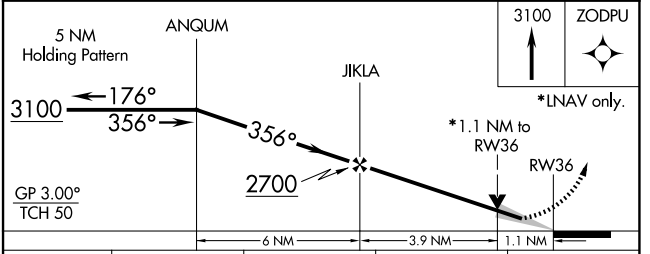
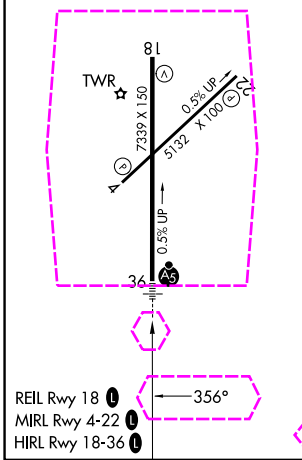
⚠ DME/DME RNP-0.3 NA. For inop MALS, increase LNAV Cat D visibility to 1 1/4 and LPV visibility to 1 all Cats. If local altimeter setting not received, use Johnson County Exec altimeter setting and increase all DA/MDAs 20 feet. VDP NA with Johnson County Exec altimeter setting.

MALS
 MISSED APPROACH: Climb to 3100 direct ZODPU and hold.

ASOS 135.325	KANSAS CITY APP CON 118.9 251.075	NEW CENTURY TOWER * 133.0 (CTAF) 0	GND CON 124.3	UNICOM 122.95
------------------------	---	--	-------------------------	-------------------------



ELEV 1087	TDZE 1066
-----------	-----------



CATEGORY	A	B	C	D
LPV DA	1316-1/2 250 (300-1/2)			
LNAV/VNAV DA	NA			
LNAV MDA	1440-1/2 374 (400-1/2)		1440-1 374 (400-1)	
CIRCLING	1560-1 473 (500-1)		1580-1/2 1640-2 493 (500-1/2) 553 (600-2)	

OLATHE, KANSAS
Amdt 2A 30JAN20

38°50'N-94°53'W

NEW CENTURY AIRCENTER (IXD) RNAV (GPS) RWY 36

NC-2 27 NOV 2025 to 25 DEC 2025

NC-2 27 NOV 2025 to 25 DEC 2025