

OLATHE, KANSAS

AL-302 (FAA)

24361

WAAS CH <b>45739</b> <b>W22A</b>	APP CRS <b>223°</b>	Rwy Idg <b>5132</b> TDZE <b>1087</b> Apt Elev <b>1087</b>
--	------------------------	---

# RNAV (GPS) RWY 22

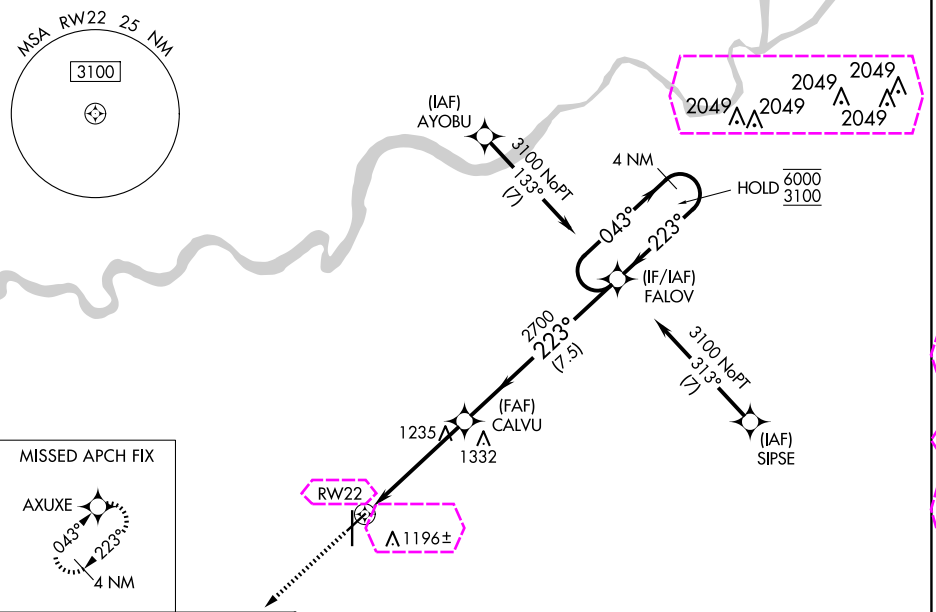
NEW CENTURY AIRCENTER (IXD)

RNP APCH - GPS.

Baro-VNAV and VDP NA when using OJC altimeter setting. For uncompensated Baro-VNAV systems, LNAV/VNAV NA below -17°C or above 54°C. When local altimeter setting not received, use OJC altimeter setting: increase LPV DA to 1355 feet and LNAV/VNAV DA to 1368 feet and all MDA 20 feet.

MISSED APPROACH: Climb to 3100 direct AXUXE and hold.

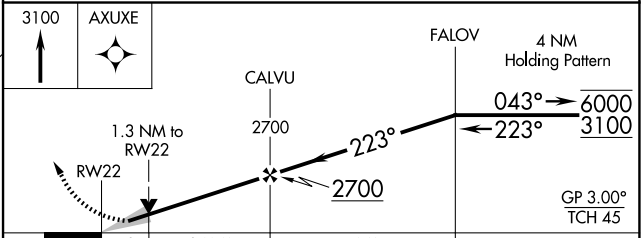
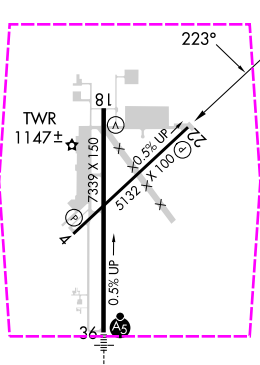
ASOS <b>135.325</b>	KANSAS CITY APP CON <b>118.9 251.075</b>	NEW CENTURY TOWER ★ <b>133.0 (CTAF) 0</b>	GND CON <b>124.3</b>	UNICOM <b>122.95</b>
------------------------	---	--	-------------------------	-------------------------



NC-2 30 OCT 2025 to 27 NOV 2025

NC-2 30 OCT 2025 to 27 NOV 2025

ELEV 1087	TDZE 1087
-----------	-----------



CATEGORY	A	B	C	D
LPV DA		1337-1	250 (300-1)	
LNAV/VNAV DA		1350-1	263 (300-1)	
LNAV MDA	1540-1	453 (500-1)	1540-1½	453 (500-1½)
<b>CIRCLING</b>	1560-1	473 (500-1)	1580-1½ 493 (500-1½)	1640-2 553 (600-2)

OLATHE, KANSAS  
Orig-A 26DEC24

38°50'N-94°53'W

# NEW CENTURY AIRCENTER (IXD) RNAV (GPS) RWY 22

OLATHE, KANSAS

AL-302 (FAA)

25331

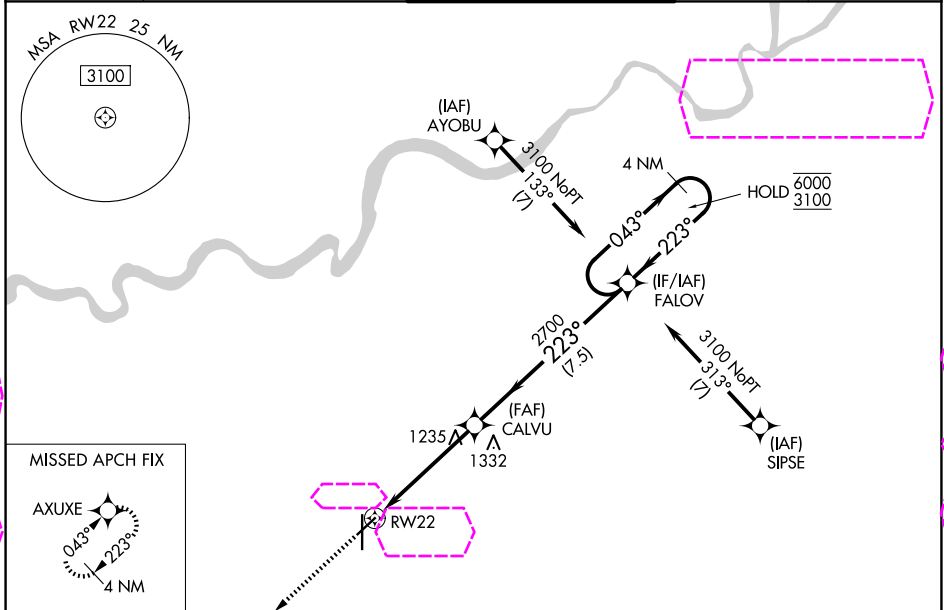
WAAS CH <b>45739</b> <b>W22A</b>	APP CRS <b>223°</b>	Rwy Ldg TDZE Apt Elev	<b>5132</b> <b>1087</b> <b>1087</b>
--	------------------------	-----------------------------	---

# RNAV (GPS) RWY 22

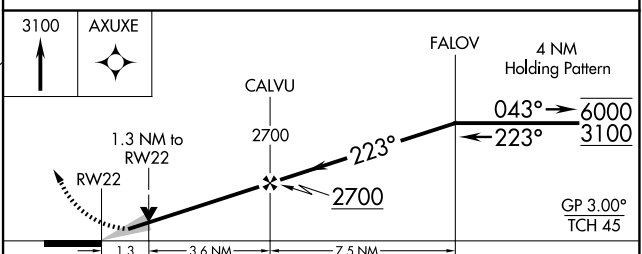
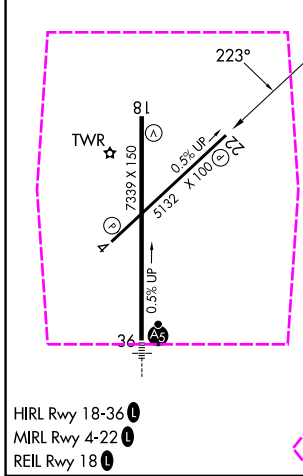
NEW CENTURY AIRCENTER (IXD)

RNP APCH - GPS.		MISSED APPROACH: Climb to 3100 direct AXUXE and hold.		
<p>▼ Baro-VNAV and VDP NA when using OJC altimeter setting. For uncompensated Baro-VNAV systems, LNAV/VNAV NA below -17°C or above 54°C. When local altimeter setting not received, use OJC altimeter setting: increase LPV DA to 1355 feet and LNAV/VNAV DA to 1368 feet and all MDA 20 feet.</p>				

ASOS <b>135.325</b>	KANSAS CITY APP CON <b>118.9 251.075</b>	NEW CENTURY TOWER ★ <b>133.0 (CTAF) 0</b>	GND CON <b>124.3</b>	UNICOM <b>122.95</b>
------------------------	---	--	-------------------------	-------------------------



ELEV 1087	TDZE 1087
-----------	-----------



CATEGORY	A	B	C	D
LPV DA		1337-1	250 (300-1)	
LNAV/VNAV DA		1350-1	263 (300-1)	
LNAV MDA	1540-1	453 (500-1)	1540-1½	453 (500-1½)
<b>CIRCLING</b>	1560-1	473 (500-1)	1580-1½ 493 (500-1½)	1640-2 553 (600-2)

OLATHE, KANSAS  
Orig-A 26DEC24

38°50'N-94°53'W

# NEW CENTURY AIRCENTER (IXD) RNAV (GPS) RWY 22

NC-2 27 NOV 2025 to 25 DEC 2025

NC-2 27 NOV 2025 to 25 DEC 2025