

OLATHE, KANSAS

AL-302 (FAA)

21112

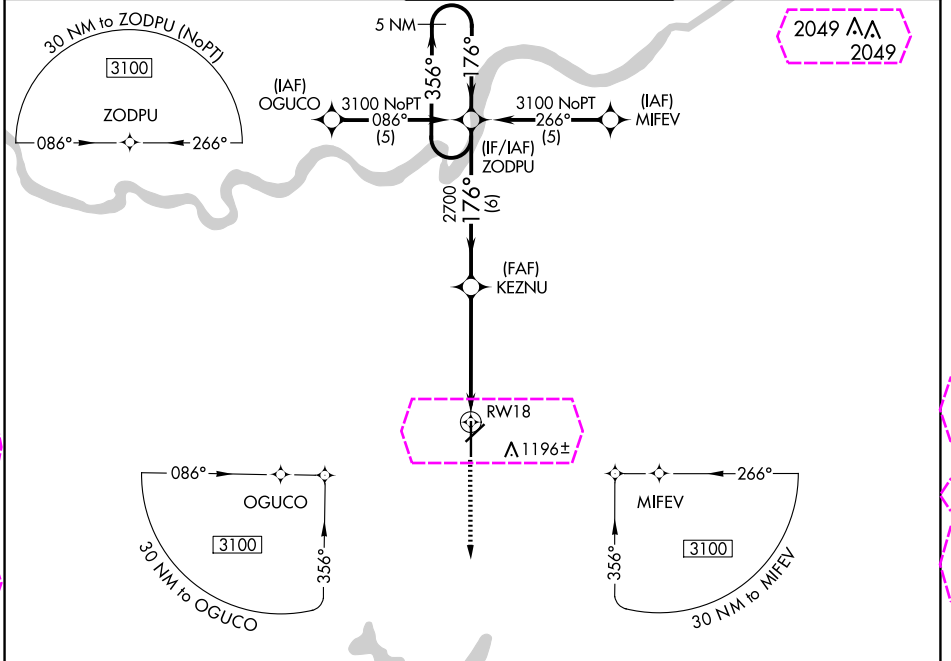
APP CRS 176°	Rwy ldg TDZE Apt Elev	7339 1085 1087
------------------------	-----------------------------	---

RNAV (GPS) RWY 18

NEW CENTURY AIRCENTER (IXD)

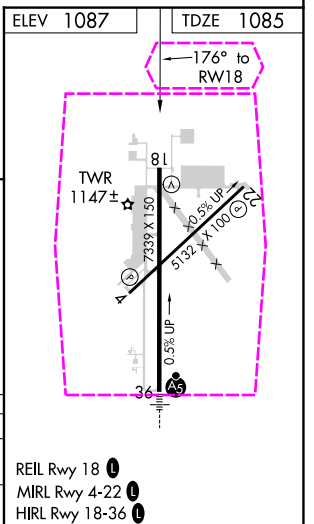
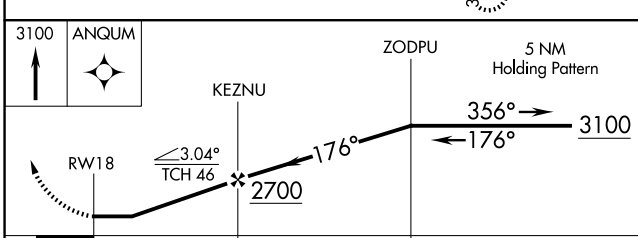
▼ DME/DME RNP-0.3 NA. If local altimeter setting not received, use Johnson County Exec altimeter setting and increase all MDAs 20 feet. **▲** MISSED APPROACH: Climb to 3100 direct ANQUM and hold.

ASOS 135.325	KANSAS CITY APP CON 118.9 251.075	NEW CENTURY TOWER * 133.0 (CTAF) 0	GND CON 124.3	UNICOM 122.95
------------------------	---	--	-------------------------	-------------------------



NC-2, 30 OCT 2025 to 27 NOV 2025

NC-2, 30 OCT 2025 to 27 NOV 2025



CATEGORY	A	B	C	D
LNVA MDA	1500-1	415 (500-1)	1500-1¼	415 (500-1¼)
CIRCLING	1560-1	473 (500-1)	1580-1½	1640-2
			493 (500-1½)	553 (600-2)

- REIL Rwy 18 0
- MIRL Rwy 4-22 0
- HIRL Rwy 18-36 0

OLATHE, KANSAS
Amdt 2A 30JAN20

38°50'N-94°53'W

NEW CENTURY AIRCENTER (IXD)

RNAV (GPS) RWY 18

