

(TIPP3.TIPP) 18088

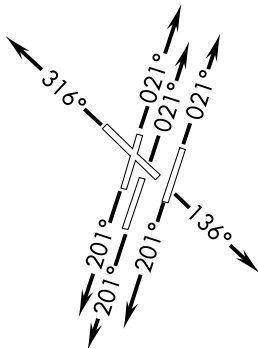
AL-282 (FAA)

NASHVILLE INTL (BNA)
NASHVILLE, TENNESSEE

TIPP THREE DEPARTURE (RNAV)

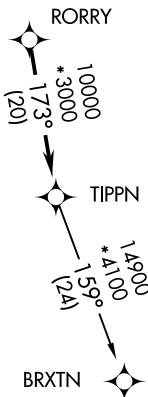
**TOP ALTITUDE:
4000**

D-ATIS 135.1
CLNC DEL 126.05
CPDLC
GND CON
121.9 348.6
NASHVILLE TOWER
118.6 257.8
NASHVILLE DEP CON
118.4 360.7



TAKEOFF MINIMUMS:
Rwys 2C, 2L, 2R, 13, 20C, 20L,
20R, 31: Standard with minimum
climb of 500' per NM to 1100.

- NOTE: DME/DME/IRU or GPS required.
- NOTE: RNAV 1.
- NOTE: Radar required.
- NOTE: For Turbojet aircraft only.
- NOTE: Transponder code will be issued via PDC or Nashville clearance delivery.
- NOTE: If unable to accept climb rates, advise ATC on initial contact.



NOTE: Chart not to scale.



DEPARTURE ROUTE DESCRIPTION

- TAKEOFF RWYS 2L/C/R: Climb heading 021° or assigned ATC heading, thence....
- TAKEOFF RWY 13: Climb heading 136° or assigned ATC heading, thence....
- TAKEOFF RWYS 20L/C/R: Climb heading 201° or assigned ATC heading, thence....
- TAKEOFF RWY 31: Climb heading 316° or assigned ATC heading, thence....

....expect radar vectors to RORRY, then on track 173° to TIPP. Maintain 4000, expect clearance to filed altitude within five (5) minutes after departure.

BRXTN TRANSITION (TIPP3.BRXTN)

TIPP THREE DEPARTURE (RNAV)
(TIPP3.TIPP) 25JUN15

NASHVILLE, TENNESSEE
NASHVILLE INTL (BNA)

SE-1, 30 OCT 2025 to 27 NOV 2025

SE-1, 30 OCT 2025 to 27 NOV 2025

(TIPP)4.TIPP) 25331

AL-282 (FAA)

NASHVILLE INTL (BNA)
NASHVILLE, TENNESSEE

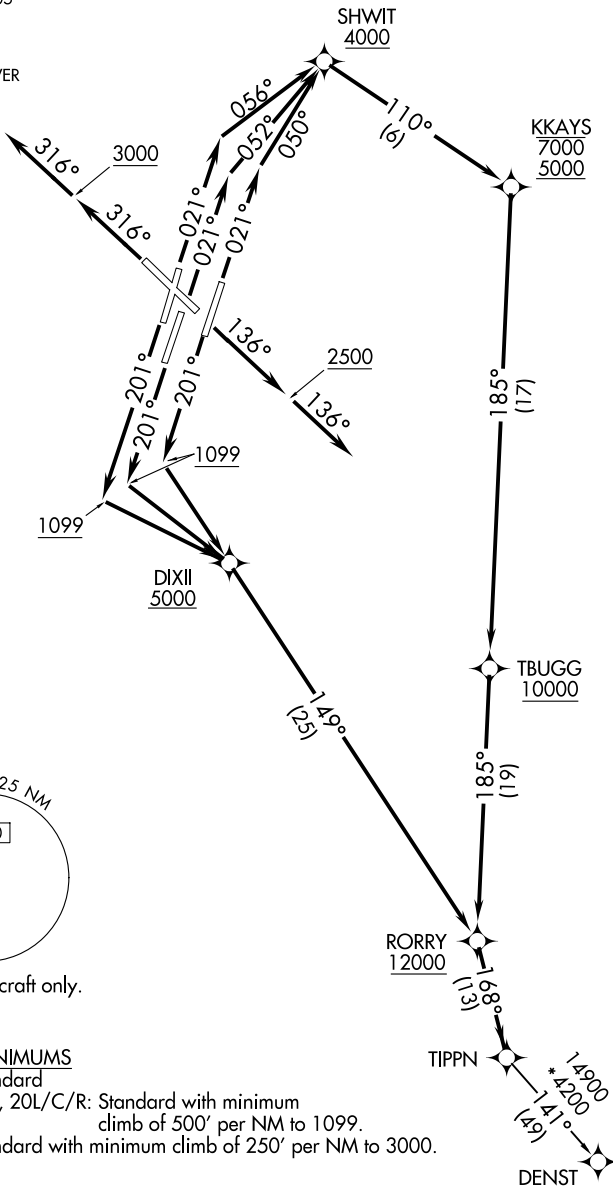
TIPP FOUR DEPARTURE (RNAV)

NASHVILLE DEP CON
118.4 360.7
D-ATIS 135.1
CLNC DEL 126.05
CPDLC
GND CON
121.9 348.6
NASHVILLE TOWER
118.6 257.8

RNAV 1-DME/DME/IRU or GPS.

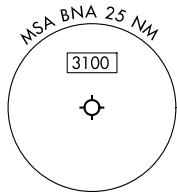
RADAR required.

TOP ALTITUDE:
15000



SE-1, 27 NOV 2025 to 25 DEC 2025

SE-1, 27 NOV 2025 to 25 DEC 2025



NOTE: Jet aircraft only.

TAKEOFF MINIMUMS

Rwy 13: Standard
Rwys 2L/C/R, 20L/C/R: Standard with minimum climb of 500' per NM to 1099.
Rwy 31: Standard with minimum climb of 250' per NM to 3000.

(CONTINUED ON FOLLOWING PAGE)

NOTE: Chart not to scale.

TIPP FOUR DEPARTURE (RNAV)

(TIPP)4.TIPP) 27NOV25

NASHVILLE, TENNESSEE
NASHVILLE INTL (BNA)