

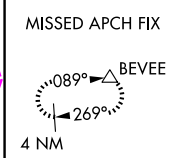
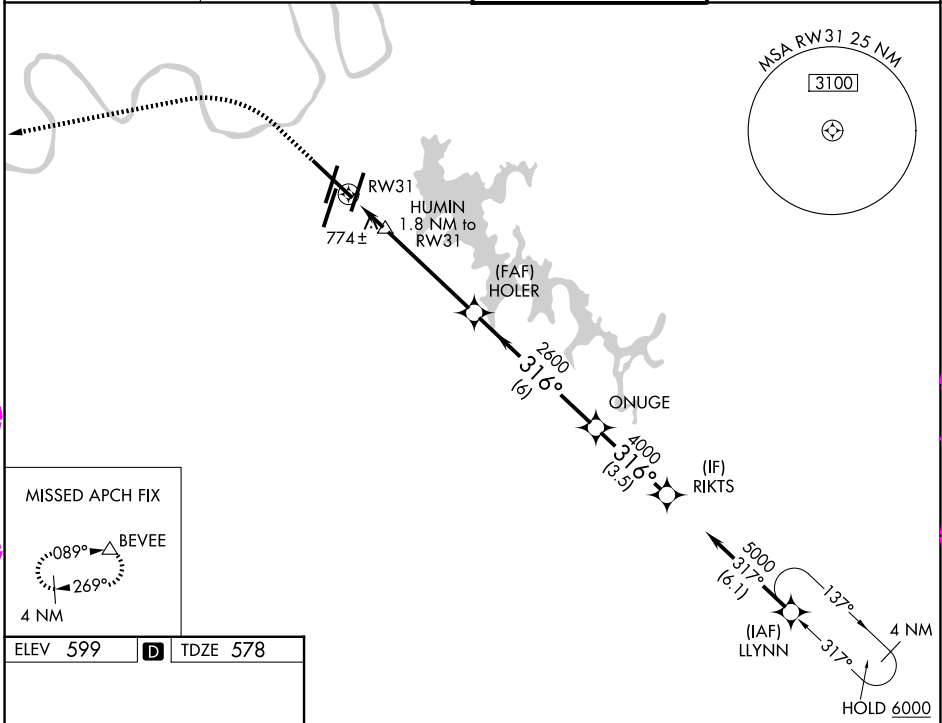
WAAS CH 65913 W31A	APP CRS 316°	Rwy Ldg 9487 TDZE 578 Apt Elev 599
--	------------------------	---

RNAV (GPS) Y RWY 31

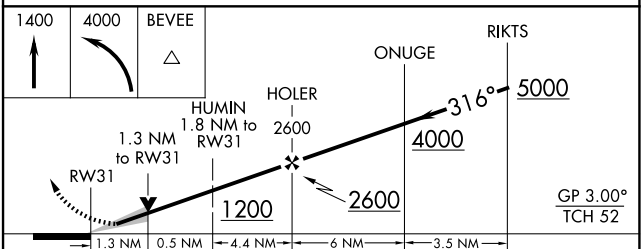
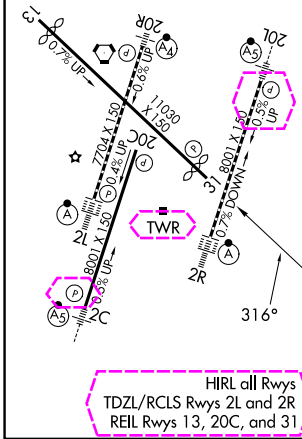
NASHVILLE INTL (BNA)

RNP APCH - GPS.	MISSED APPROACH: Climb to 1400 then climbing left turn to 4000 direct BEVEE and hold.
▼ For uncompensated Baro-VNAV systems, LNAV/VNAV NA below -10°C or above 54°C.	

D-ATIS 135.1	NASHVILLE APP CON 118.4 360.7 (030°-196°) 119.35 372.0 (197°-029°)	NASHVILLE TOWER 118.6 257.8	GND CON 121.9 348.6
------------------------	--	---------------------------------------	-------------------------------



ELEV 599	D	TDZE 578
----------	----------	----------



CATEGORY	A	B	C	D
LPV DA		778- ³ / ₄	200 (200- ³ / ₄)	
LNAV/VNAV DA		1040-1 ³ / ₈	462 (500-1 ³ / ₈)	
LNAV MDA	1040-1	462 (500-1)	1040-1 ³ / ₈	462 (500-1 ³ / ₈)
CIRCLING	1100-1 501 (600-1)	1120-1 521 (600-1)	1160-1 ¹ / ₂ 561 (600-1 ¹ / ₂)	1380-2 ¹ / ₂ 781 (800-2 ¹ / ₂)

HIRL all Rwy's
TDZL/RCLS Rwy's 2L and 2R
REIL Rwy's 13, 20C, and 31

SE-1, 127 NOV 2025 to 25 DEC 2025

SE-1, 27 NOV 2025 to 25 DEC 2025