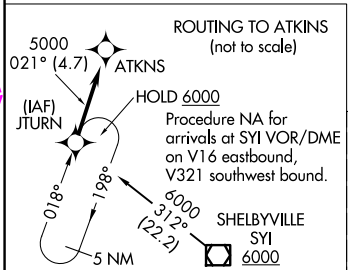
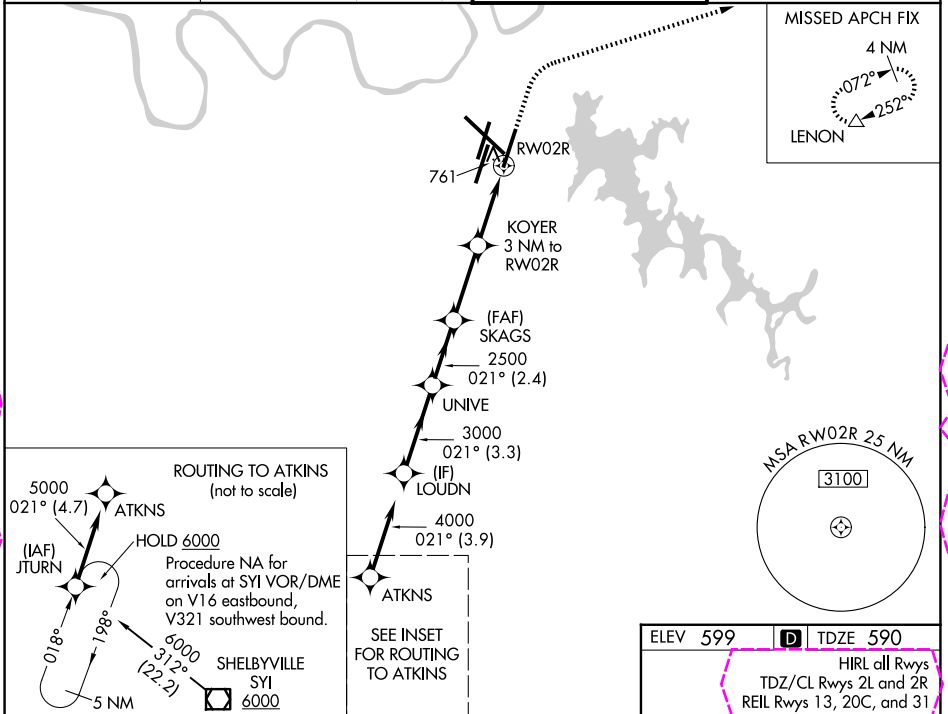


WAAS CH 93713 W02D	APP CRS 021°	Rwy Ldg TDZE Apt Elev	8000 590 599
--	------------------------	-----------------------------	---

RNAV (GPS) Y RWY 2R

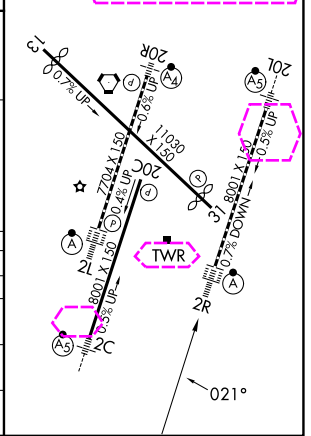
NASHVILLE INTL (BNA)

RNP APCH - GPS		ALSF-2	MISSED APPROACH: Climb to 1300, then climbing right turn to 4000 direct LENON and hold.
<p>▼ For uncompensated Baro-VNAV systems, LNAV/VNAV NA below -10°C or above 54°C. Simultaneous approach authorized. Use of FD or AP required during simultaneous operations. LNAV procedure NA during simultaneous operations. For inop ALS increase LNAV/VNAV visibility all Cats to RVR 5500.</p>			
D-ATIS 135.1	NASHVILLE APP CON 118.4 360.7 (030°-196°) 119.35 372.0 (197°-029°)	NASHVILLE TOWER 118.6 257.8	GND CON 121.9 348.6



ELEV 599	D TDZE 590
HIRL all Rwys TDZ/CL Rwys 2L and 2R REIL Rwys 13, 20C, and 31	

	LOUDN	UNIVE	SKAGS	KOYER	LENON
	4000	3000	2500	1600	1300 / 4000
	GP 3.00° TCH 55				
	3.3 NM	2.4 NM	2.8 NM	1.8 NM	1.2 NM
CATEGORY	A	B	C	D	
LPV DA		790/18	200 (200-1/2)		
LNAV/VNAV DA		959/35	369 (400-3/4)		
LNAV MDA	1020/24	430 (500-1/2)	1020/40	430 (500-3/4)	
CIRCLING	1100-1 501 (600-1)	1120-1 521 (600-1)	1200-1 3/4 601 (700-1 3/4)	1380-2 1/2 781 (800-2 1/2)	



SE-1, 30 OCT 2025 to 27 NOV 2025

SE-1, 30 OCT 2025 to 27 NOV 2025

