

WAAS CH 42713 W02A	APP CRS 021°	Rwy Ldg TDZE Apt Elev	7702 599 599
--	------------------------	-----------------------------	---

RNAV (GPS) Y RWY 2L

NASHVILLE INTL (BNA)

RNP APCH - GPS.

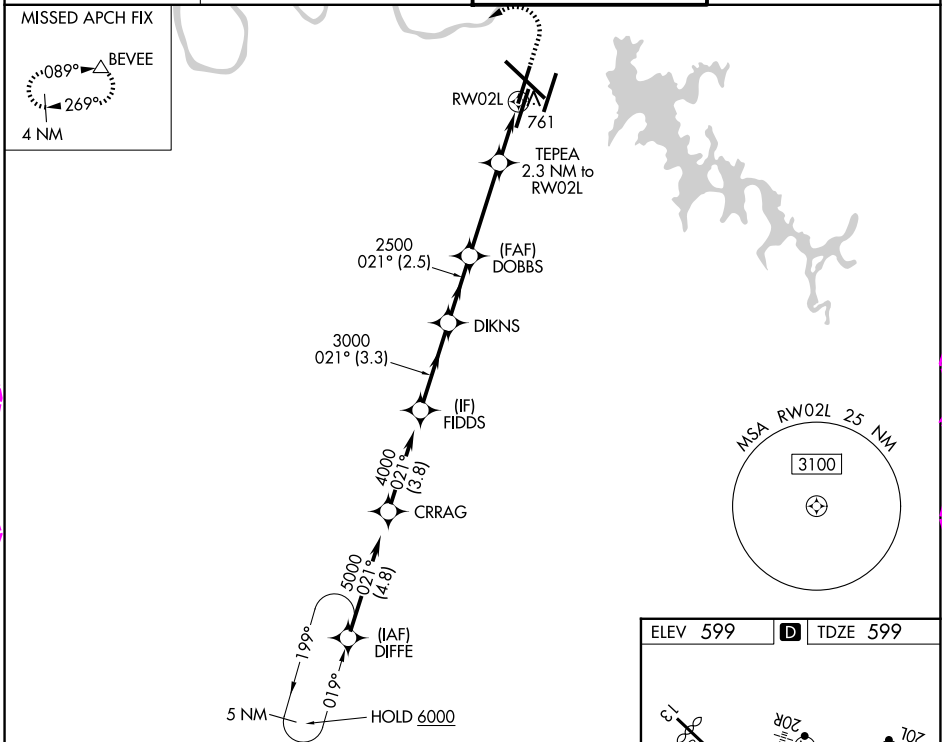
▼ LNAV procedure NA during simultaneous operations. For uncompensated Baro-VNAV systems, LNAV/VNAV NA below -10°C or above 54°C. Simultaneous approach authorized. Use of FD or AP required during simultaneous operations. For inop ALS, increase LNAV/VNAV all Cats visibility to RVR 5500.

ALSF-2

MISSED APPROACH: Climb to 1100 then climbing left turn to 4000 direct BEVEE and hold.



D-ATIS 135.1	NASHVILLE APP CON 118.4 360.7 (030°-196°) 119.35 372.0 (197°-029°)	NASHVILLE TOWER 118.6 257.8	GND CON 121.9 348.6
------------------------	--	---------------------------------------	-------------------------------



SE-1, 27 NOV 2025 to 25 DEC 2025

SE-1, 27 NOV 2025 to 25 DEC 2025

FIDDS	DIKNS	DOBBS	TEPEA	1100	4000	BEVEE
4000	3000	2500	2.3 NM to RW02L	↑	↶	△
GP 3.00°	2500	1380	1.2 NM to RW02L			
TCH 55	3.3 NM	2.5 NM	3.5 NM	1.2 NM	1.2 NM	
CATEGORY	A		B		C	
LPV DA	799/18		200 (200-½)			
LNAV/VNAV DA	949/30		350 (400-⅙)			
LNAV MDA	1020/24	421 (500-½)	1020/40	421 (500-¾)		
CIRCLING	1100-1 501 (600-1)	1120-1 521 (600-1)	1200-1¾ 601 (700-1¾)	1380-2½ 781 (800-2½)		

