

WAAS CH 70613 W02B	APP CRS 021°	Rwy Ldg 7601 TDZE 587 Apt Elev 599
--	------------------------	---

RNAV (GPS) Y RWY 2C

NASHVILLE INTL (BNA)

RNP APCH - GPS.

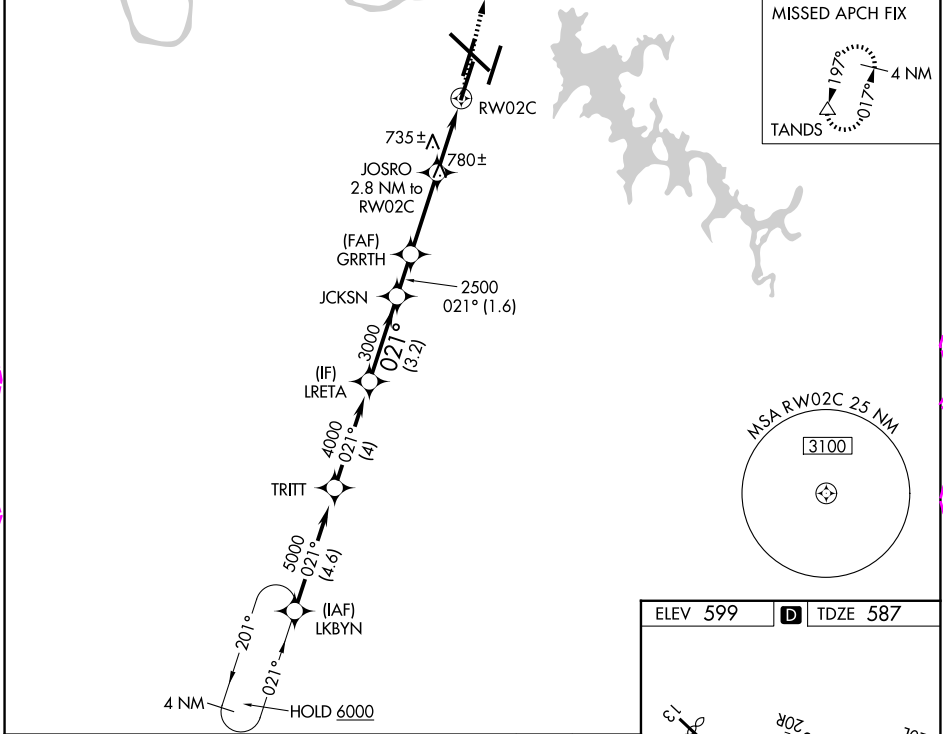
Simultaneous approach authorized. LNAV procedure NA during simultaneous operations. Use of FD or AP providing RNAV track guidance required during simultaneous operations. For uncompensated Baro-VNAV systems, LNAV/VNAV NA below -10°C or above 54°C. For inop ALS, increase LNAV/VNAV all Cats to RVR 4500 and LNAV Cat C and D visibility to RVR 6000. **RVR 1800 authorized with use of FD or AP or HUD to DA.

MALSR

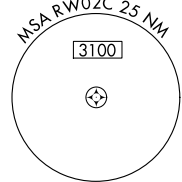


MISSED APPROACH:
Climb to 4000 direct
TANDS and hold.

D-ATIS 135.1	NASHVILLE APP CON 118.4 360.7 (030°-196°) 119.35 372.0 (197°-029°)	NASHVILLE TOWER 118.6 257.8	GND CON 121.9 348.6
------------------------	--	---------------------------------------	-------------------------------



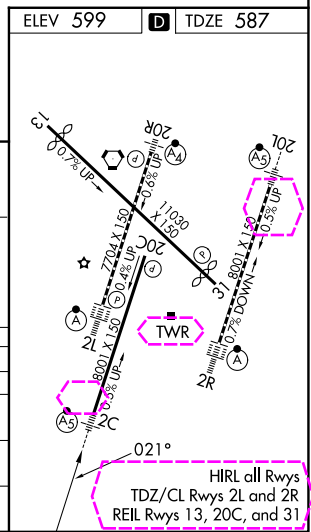
MISSED APCH FIX



SE-1, 30 OCT 2025 to 27 NOV 2025

SE-1, 30 OCT 2025 to 27 NOV 2025

LRETA	JCKSN	GRRTH	JOSRO	RWY 2C
4000	2500	1520	1380	1380
GP 3.00°	TCH 60			
3.2 NM	1.6 NM	3.1 NM	1.6 NM	1.2 NM
CATEGORY A	B	C	D	
LPV DA **	787/24	200 (200-½)		
LNAV/VNAV DA	891/24	304 (300-½)		
LNAV MDA	1000/24	413 (500-½)	1000/40	413 (500-¾)
CIRCLING	1100-1 501 (600-1)	1120-1 521 (600-1)	1160-1¾ 561 (600-1¾)	1380-2½ 781 (800-2½)



WAAS CH 70613 W02B	APP CRS 021°	Rwy Ldg TDZE Apt Elev	7601 587 599
--	------------------------	-----------------------------	---

RNAV (GPS) Y RWY 2C

NASHVILLE INTL (BNA)

RNP APCH - GPS.

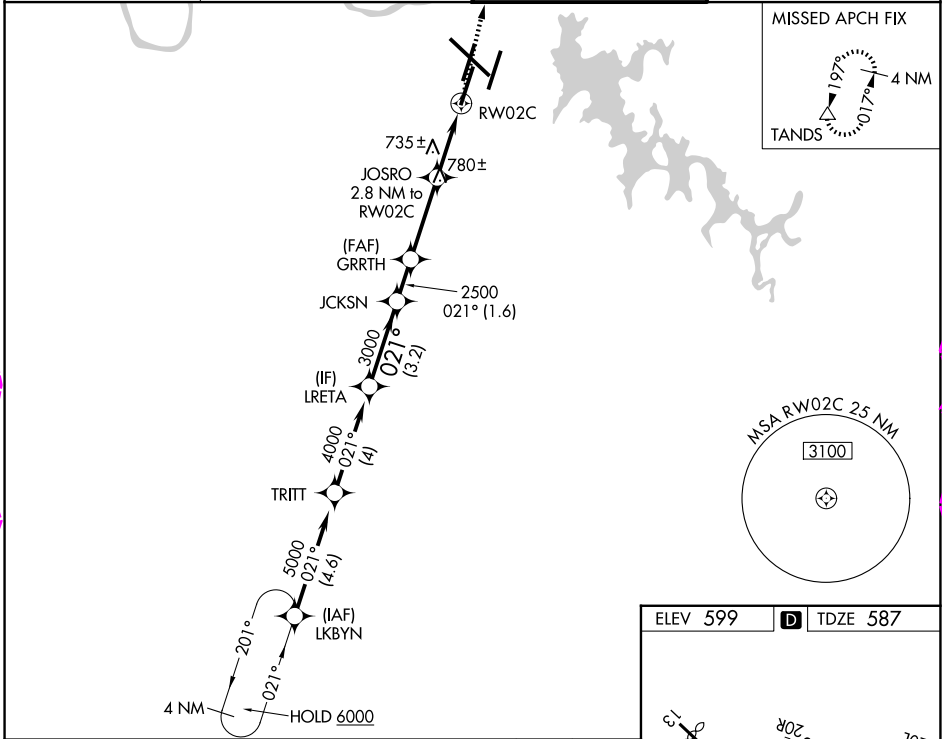
Simultaneous approach authorized. LNAV procedure NA during simultaneous operations. Use of FD or AP providing RNAV track guidance required during simultaneous operations. For uncompensated Baro-VNAV systems, LNAV/VNAV NA below -10°C or above 54°C. For inop ALS, increase LNAV/VNAV all Cats to RVR 4500 and LNAV Cat C and D visibility to RVR 6000. **RVR 1800 authorized with use of FD or AP or HUD to DA.

MALSR

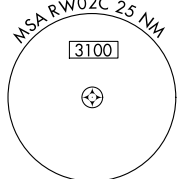


MISSED APPROACH:
Climb to 4000 direct
TANDS and hold.

D-ATIS 135.1	NASHVILLE APP CON 118.4 360.7 (030°-196°) 119.35 372.0 (197°-029°)	NASHVILLE TOWER 118.6 257.8	GND CON 121.9 348.6
------------------------	--	---------------------------------------	-------------------------------



MISSED APCH FIX



SE-1, 127 NOV 2025 to 25 DEC 2025

SE-1, 27 NOV 2025 to 25 DEC 2025

	LRETA	JCKSN	GRRTH	JOSRO	RWY 2C
	4000	3000	2500	1520	
	GP 3.00°				
	TCH 60				
	3.2 NM	1.6 NM	3.1 NM	1.6 NM	1.2 NM
CATEGORY	A		B		C
LPV DA **	787/24		200 (200-½)		
LNAV/VNAV DA	891/24		304 (300-½)		
LNAV MDA	1000/24	413 (500-½)	1000/40	413 (500-¾)	
CIRCLING	1100-1 501 (600-1)	1120-1 521 (600-1)	1160-1¾ 561 (600-1¾)	1380-2½ 781 (800-2½)	

