

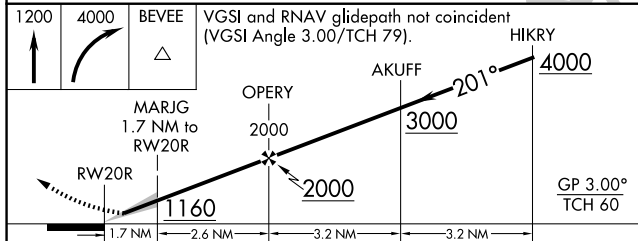
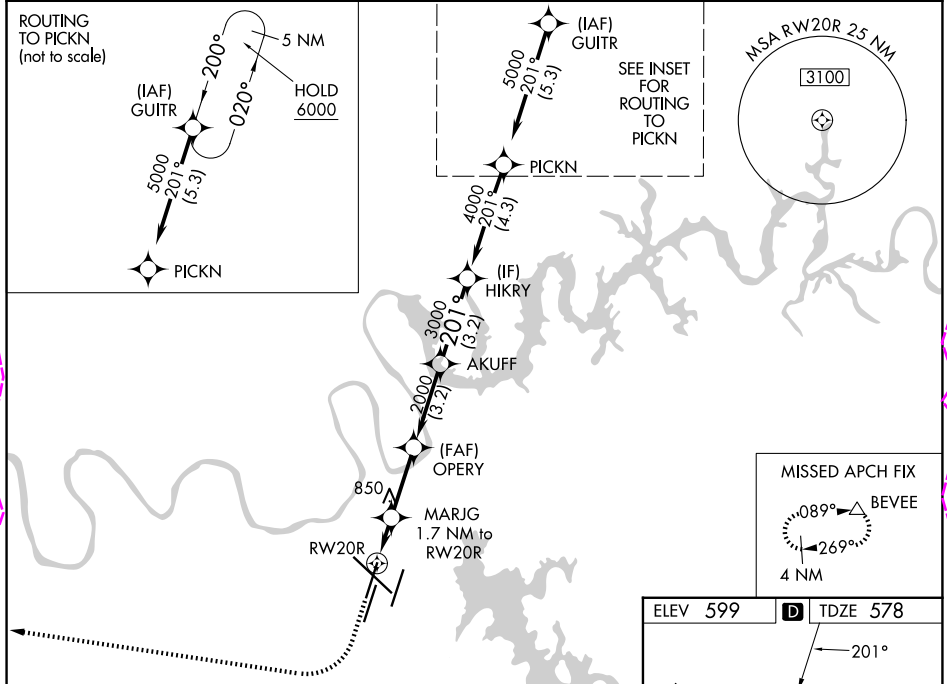
WAAS CH 78411 W20A	APP CRS 201°	Rwy Ldg TDZE Apt Elev	7702 578 599
--	------------------------	-----------------------------	---

RNAV (GPS) Y RWY 20R

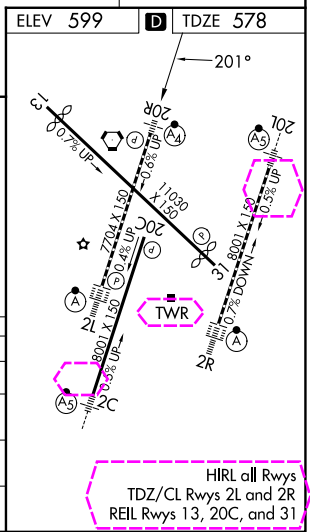
NASHVILLE INTL (BNA)

RNP APCH - GPS.	MALSF	MISSED APPROACH: Climb to 1200 then climbing right turn to 4000 direct BEVEE and hold.
<p>▼ LNAV procedure NA during simultaneous operations. For uncompensated Baro-VNAV systems, LNAV/VNAV NA below -10°C or above 54°C. Simultaneous approach authorized. Use of FD or AP required during simultaneous operations. Inop table does not apply to LPV all Cats.</p> <p>▲ For inop ALS, increase LNAV/VNAV all Cats visibility to RVR 4500 and LNAV Cats C and D visibility to RVR 6000.</p>		

D-ATIS 135.1	NASHVILLE APP CON 118.4 360.7 (030°-196°) 119.35 372.0 (197°-029°)	NASHVILLE TOWER 118.6 257.8	GND CON 121.9 348.6
------------------------	--	---------------------------------------	-------------------------------



CATEGORY	A	B	C	D
LPV DA	778/40		200 (200-¾)	
LNAV/VNAV DA	880/40		302 (300-¾)	
LNAV MDA	980/40		980/50	
	402 (400-¾)		402 (400-1)	
CIRCLING	1100-1 501 (600-1)	1120-1 521 (600-1)	1200-1¾ 601 (700-1¾)	1380-2½ 781 (800-2½)



SE-1, 30 OCT 2025 to 27 NOV 2025

SE-1, 30 OCT 2025 to 27 NOV 2025

NASHVILLE, TENNESSEE

AL-282 (FAA)

25331

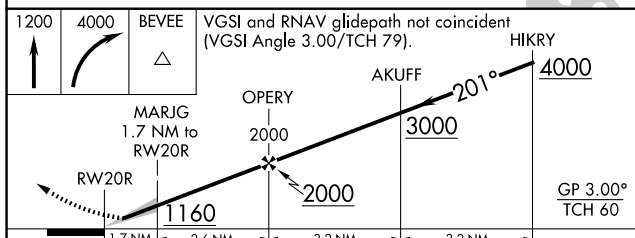
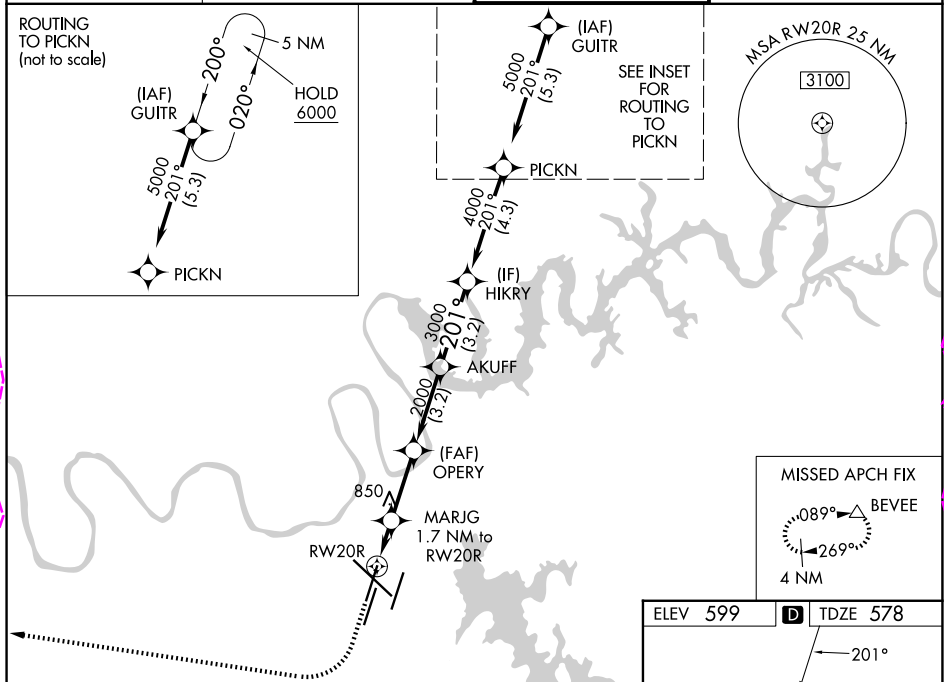
WAAS CH 78411 W20A	APP CRS 201°	Rwy Ldg TDZE Apt Elev	7702 578 599
--	------------------------	-----------------------------	---

RNAV (GPS) Y RWY 20R

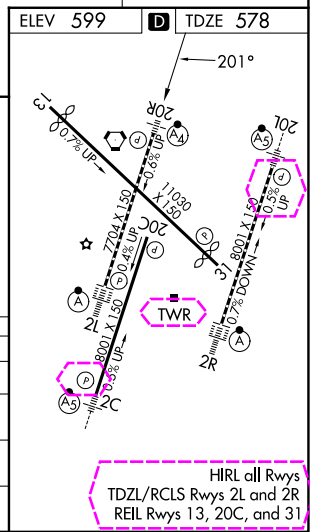
NASHVILLE INTL (BNA)

RNP APCH - GPS.	<p>MALSF</p>	<p>MISSED APPROACH: Climb to 1200 then climbing right turn to 4000 direct BEVEE and hold.</p>
<p>▼ LNAV procedure NA during simultaneous operations. For uncompensated Baro-VNAV systems, LNAV/VNAV NA below -10°C or above 54°C. Simultaneous approach authorized. Use of FD or AP required during simultaneous operations. Inop table does not apply to LPV all Cats. For inop ALS, increase LNAV/VNAV all Cats visibility to RVR 4500 and LNAV Cats C and D visibility to RVR 6000.</p>		

D-ATIS 135.1	NASHVILLE APP CON 118.4 360.7 (030°-196°) 119.35 372.0 (197°-029°)	NASHVILLE TOWER 118.6 257.8	GND CON 121.9 348.6
------------------------	--	---------------------------------------	-------------------------------



1200	4000	BEVEE	VGSI and RNAV glidepath not coincident (VGSI Angle 3.00/TCH 79).	
CATEGORY	A	B	C	D
LPV DA	778/40		200 (200-¾)	
LNAV/VNAV DA	880/40		302 (300-¾)	
LNAV MDA	980/40		980/50	
	402 (400-¾)		402 (400-1)	
CIRCLING	1100-1 501 (600-1)		1120-1 521 (600-1)	
	1200-1¾ 601 (700-1¾)		1380-2½ 781 (800-2½)	



NASHVILLE, TENNESSEE
Amdt 4 02OCT25

36°07'N-86°41'W

RNAV (GPS) Y RWY 20R

NASHVILLE INTL (BNA)

SE-1, 127 NOV 2025 to 25 DEC 2025

SE-1, 27 NOV 2025 to 25 DEC 2025