

NASHVILLE, TENNESSEE

AL-282 (FAA)

25331

WAAS CH 49013 W20D	APP CRS 201°	Rwy Ldg TDZE 551 Apt Elev 599
--	------------------------	---

RNAV (GPS) Y RWY 20L

NASHVILLE INTL (BNA)

RNP APCH - GPS.

▼ For uncompensated Baro-VNAV systems, LNAV/VNAV NA below -10°C or above 54°C.
 ▲ Simultaneous approach authorized. Use of FD or AP required during simultaneous operations. LNAV procedure NA during simultaneous operations.
 *RVR 1800 authorized with use of FD or AP or HUD to DA.

MALSR



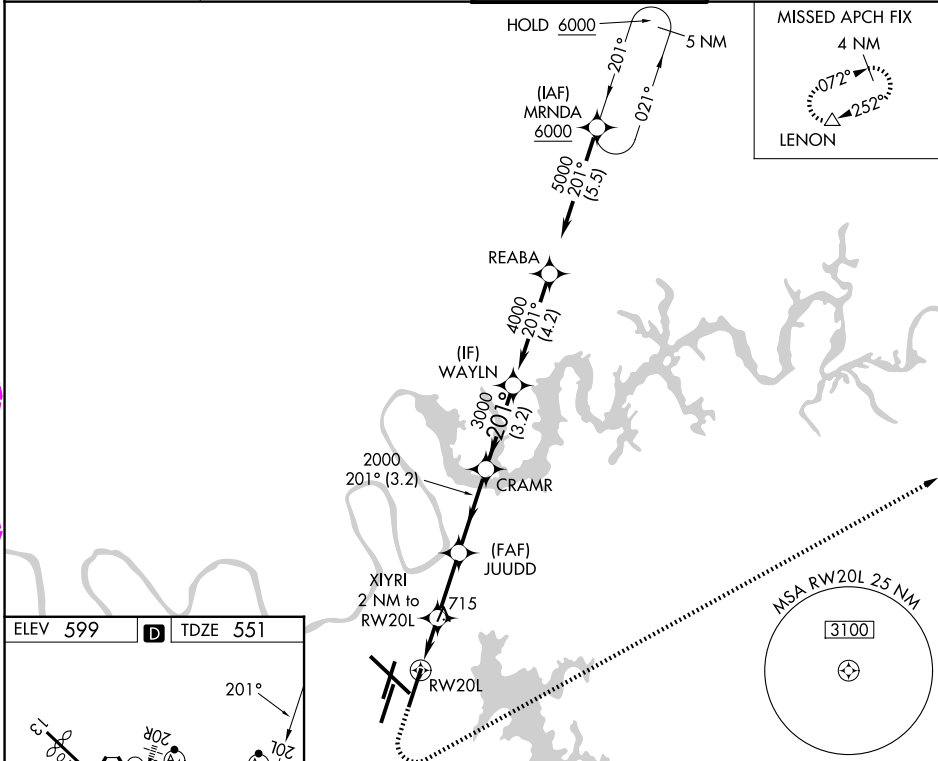
MISSED APPROACH:
Climb to 1300, then climbing left turn to 4000 direct LENON and hold.

D-ATIS
135.1

NASHVILLE APP CON
118.4 360.7 (030°-196°)
119.35 372.0 (197°-029°)

NASHVILLE TOWER
118.6 257.8

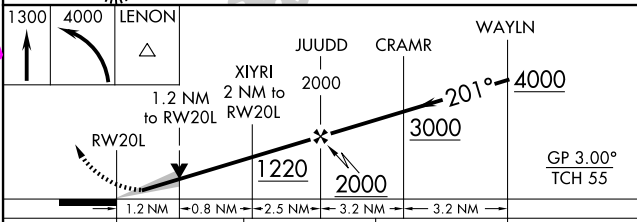
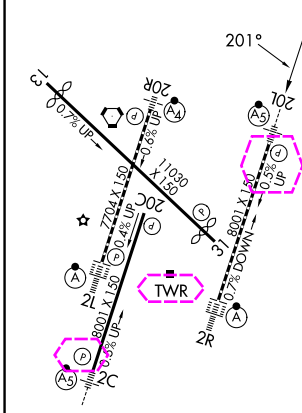
GND CON
121.9 348.6



SE-1, 27 NOV 2025 to 25 DEC 2025

SE-1, 27 NOV 2025 to 25 DEC 2025

ELEV 599	D	TDZE 551
----------	---	----------



CATEGORY	A	B	C	D
LPV DA*	751/24 200 (200-½)			
LNAV/VNAV DA	879/26 328 (300-½)			
LNAV MDA	980/24	429 (400-½)	980/40	429 (400-¾)
CIRCLING	1100-1 501 (600-1)	1120-1 521 (600-1)	1200-1¾ 601 (700-1¾)	1380-2½ 781 (800-2½)

HIRL all Rwys
TDZL/RCLS Rwys 2L and 2R
REIL Rwys 13, 20C, and 31

NASHVILLE, TENNESSEE
Amdt 3 02OCT25

36°07'N-86°41'W

NASHVILLE INTL (BNA)

RNAV (GPS) Y RWY 20L