



APP CRS	Rwy Ldg	<b>8000</b>
<b>021°</b>	TDZE	<b>590</b>
	Apt Elev	<b>599</b>

# RNAV (RNP) Z RWY 2R

NASHVILLE INTL (BNA)

RNP AR APCH - GPS. Authorization required. From WAMAR, ZODKA, MUUSC, or AMAND: RF

▼ For uncompensated Baro-VNAV systems, procedure NA below -10°C or above 54°C. Simultaneous approach authorized with Rwy 2L/C. For inop ALS, increase RNP 0.15 all Cats visibility to RVR 5500 and RNP 0.3 all Cats visibility to 6000.

ALSF-2

(A)

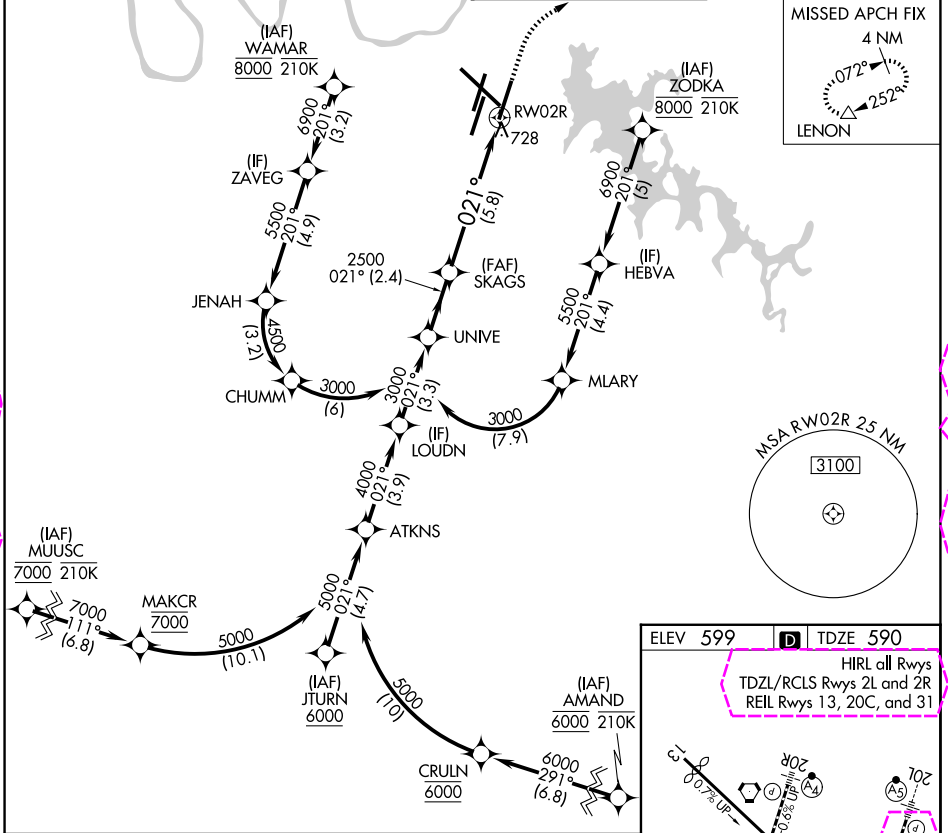
MISSED APPROACH: Climb to 1300 then climbing right turn to 4000 direct LENON and hold.

D-ATIS  
**135.1**

NASHVILLE APP CON  
**118.4 360.7** (030°-196°)  
**119.35 372.0** (197°-029°)

NASHVILLE TOWER  
**118.6 257.8**

GND CON  
**121.9 348.6**



SE-1, 127 NOV 2025 to 25 DEC 2025

SE-1, 27 NOV 2025 to 25 DEC 2025

See planview for multiple IF locations.

	UNIVE	SKAGS	1300	4000	LENON
	3000	2500	↑	↷	△
	021°				
	2500				
	2.4 NM		5.8 NM		
	GP 3.00°		TCH 55		
CATEGORY	A	B	C	D	
RNP 0.15 DA		938/30	348 (400- <sup>3</sup> / <sub>4</sub> )		
RNP 0.30 DA		994/40	404 (400- <sup>3</sup> / <sub>4</sub> )		

**AUTHORIZATION REQUIRED**

