


RNAV (RNP) Z RWY 2C

NASHVILLE INTL (BNA)

APP CRS	Rwy Ldg	7601
021°	TDZE	587
	Apt Elev	599

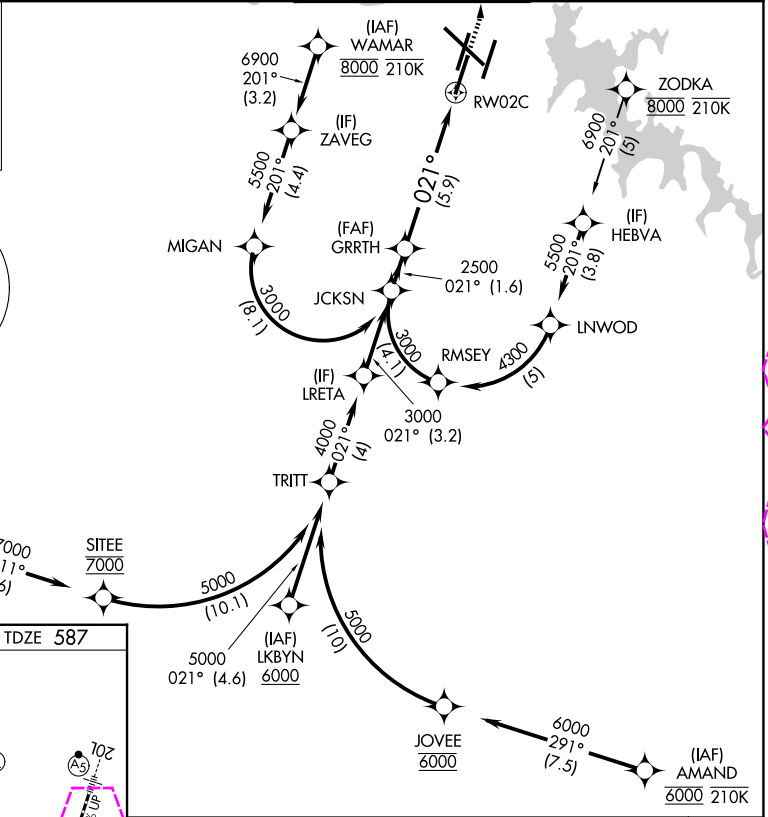
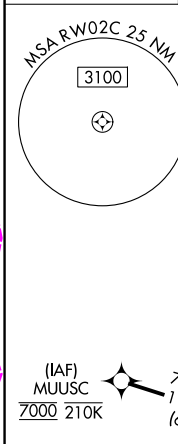
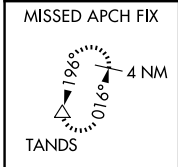
RNP APCH - GPS. Authorization required. From SITEE, JOVEE, LNWOD, RMSEY or MIGAN: RF.

▼ For uncompensated Baro-VNAV systems, procedure NA below -10°C or above 54°C. Simultaneous approach authorized. For inop ALS, increase RNP 0.15 all Cats visibility to RVR 4500, increase RNP 0.30 all Cats visibility to 1½ SM.

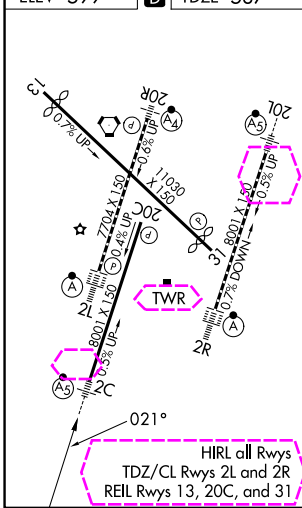
MALSR 

MISSED APPROACH: Climb to 1300 then climbing left turn to 4000 direct TANDS and hold.

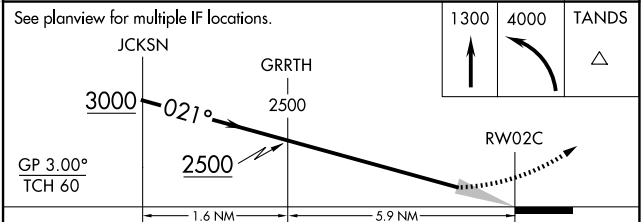
D-ATIS	NASHVILLE APP CON	NASHVILLE TOWER	GND CON
135.1	118.4 360.7 (030°-196°) 119.35 372.0 (197°-029°)	118.6 257.8	121.9 348.6



ELEV 599	D	TDZE 587
----------	----------	----------



See planview for multiple IF locations.



CATEGORY	A	B	C	D
RNP 0.15 DA		852/24	265 (300-½)	
RNP 0.30 DA		1018/50	431 (500-1)	

AUTHORIZATION REQUIRED

SE-1, 30 OCT 2025 to 27 NOV 2025

SE-1, 30 OCT 2025 to 27 NOV 2025

NASHVILLE, TENNESSEE

AL-282 (FAA)

25331

APP CRS Rwy Ldg **7601**
021° TDZE **587**
 Apt Elev **599**

RNAV (RNP) Z RWY 2C

NASHVILLE INTL (BNA)

RNP APCH - GPS. Authorization required. From SITEE, JOVEE, LNWOD, RMSEY or MIGAN: RF.

MALSR

MISSED APPROACH: Climb to 1300 then climbing left turn to 4000 direct TANDS and hold.

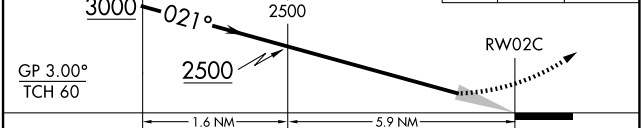
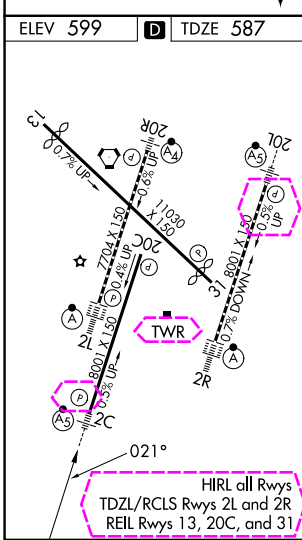
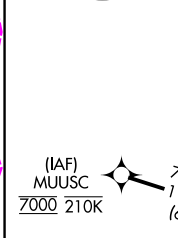
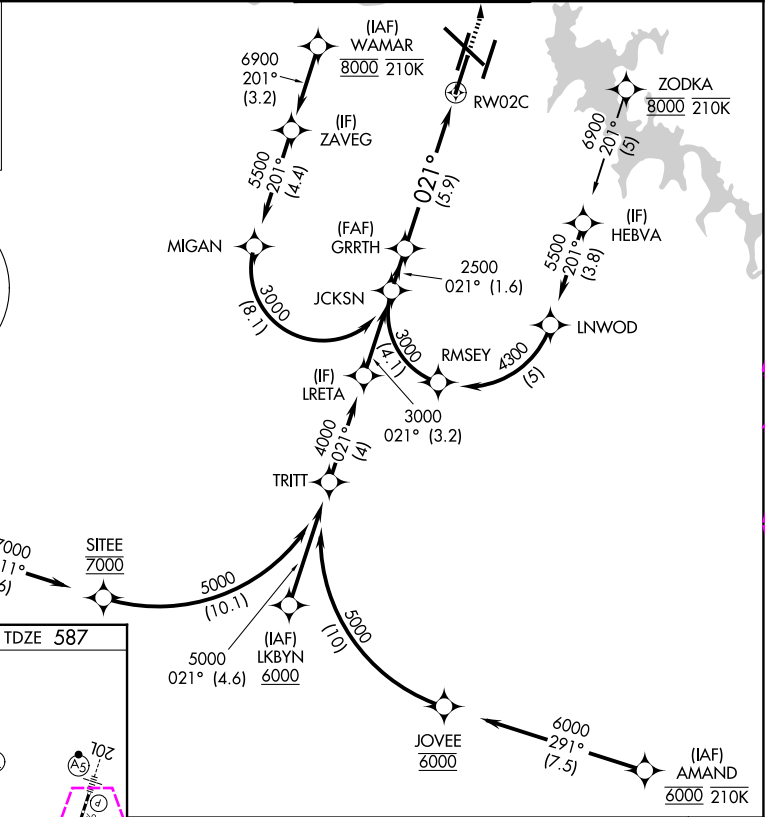
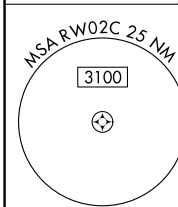
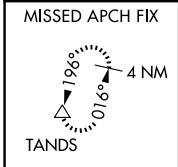
For uncompensated Baro-VNAV systems, procedure NA below -10°C or above 54°C. Simultaneous approach authorized. For inop ALS, increase RNP 0.15 all Cats visibility to RVR 4500, increase RNP 0.30 all Cats visibility to 1 3/8 SM.

D-ATIS
135.1

NASHVILLE APP CON
118.4 360.7 (030°-196°)
119.35 372.0 (197°-029°)

NASHVILLE TOWER
118.6 257.8

GND CON
121.9 348.6



CATEGORY	A	B	C	D
RNP 0.15 DA		852/24	265 (300-1/2)	
RNP 0.30 DA		1018/50	431 (500-1)	

AUTHORIZATION REQUIRED

NASHVILLE, TENNESSEE
 Amdt 3 02OCT25

36°07'N-86°41'W

NASHVILLE INTL (BNA)

RNAV (RNP) Z RWY 2C

SE-1, 127 NOV 2025 to 25 DEC 2025

SE-1, 27 NOV 2025 to 25 DEC 2025