

NASHVILLE, TENNESSEE

AL-282 (FAA)

25275

RNAV (RNP) Z RWY 20R

NASHVILLE INTL (BNA)

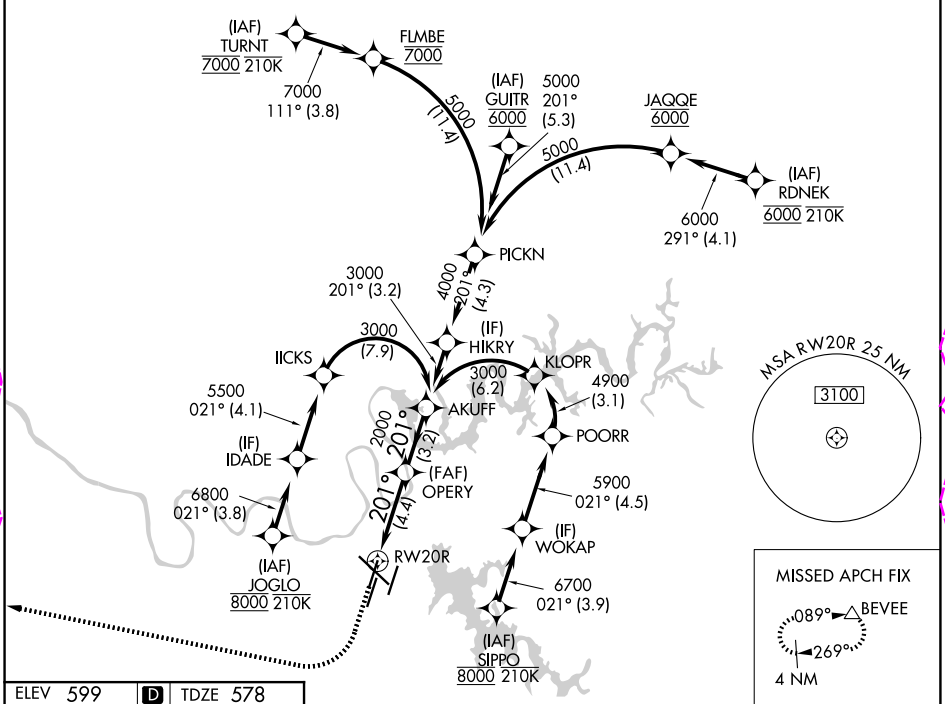
APP CRS	Rwy Ldg	7702
201°	TDZE	578
	Apt Elev	599

RNP AR APCH - GPS. Authorization required. From JAQQE, FLMBE, IICKS, POORR, or KLOPR: RF.

MALSF	MISSED APPROACH: Climb to 1200 then climbing right turn to 4000 direct BEVEE and hold.

Simultaneous approach authorized with Rwy 20L. For uncompensated Baro-VNAV systems, LNAV/VNAV NA below -10°C or above 54°C. Inop table does not apply.

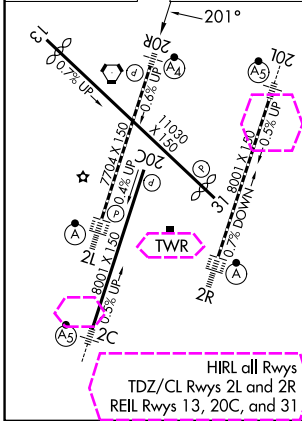
D-ATIS 135.1	NASHVILLE APP CON 118.4 360.7 (030°-196°) 119.35 372.0 (197°-029°)	NASHVILLE TOWER 118.6 257.8	GND CON 121.9 348.6
------------------------	--	---------------------------------------	-------------------------------



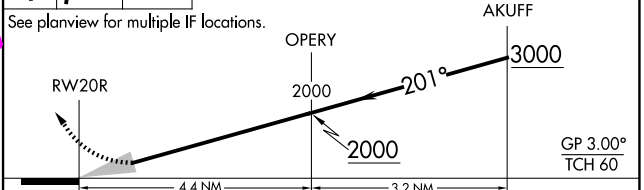
SE-1, 30 OCT 2025 to 27 NOV 2025

SE-1, 30 OCT 2025 to 27 NOV 2025

ELEV 599	D	TDZE 578
----------	----------	----------



1200	4000	BEVEE	VGSI and RNAV glidepath not coincident (VGSI Angle 3.00/TCH 79).



CATEGORY	A	B	C	D
RNP 0.13 DA		927/40	349 (400-¾)	
RNP 0.30 DA		1042/60	464 (500-1¼)	

AUTHORIZATION REQUIRED

NASHVILLE, TENNESSEE
Amdt 3 02OCT25

36°07'N-86°41'W

NASHVILLE INTL (BNA)
RNAV (RNP) Z RWY 20R

RNAV (RNP) Z RWY 20R

NASHVILLE INTL (BNA)

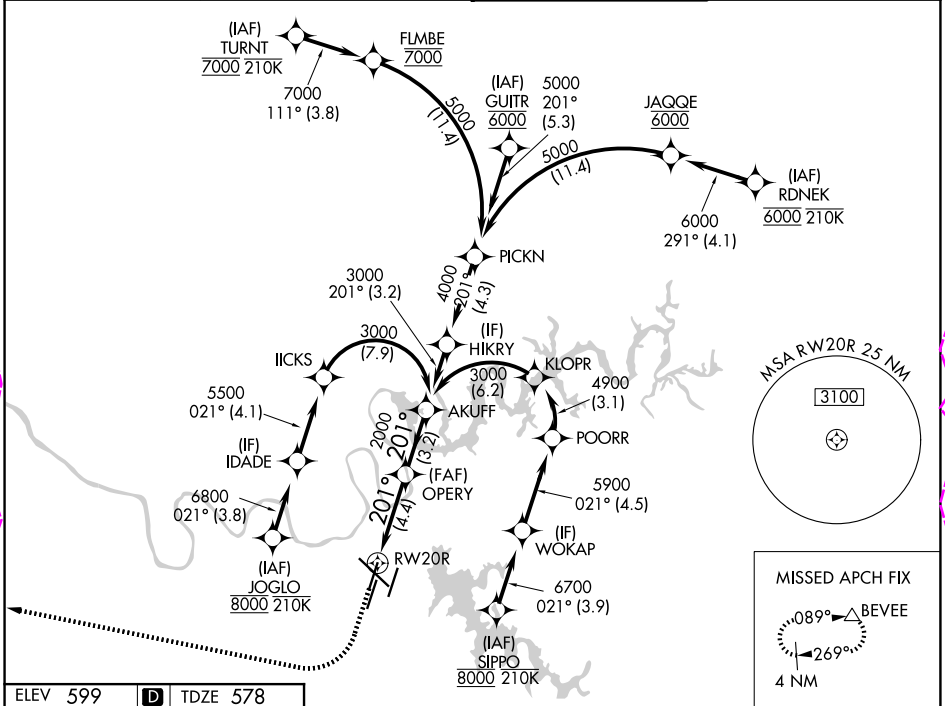
APP CRS	Rwy Ldg	7702
201°	TDZE	578
	Apt Elev	599

RNP AR APCH - GPS. Authorization required. From JAQQE, FLMBE, IICKS, POORR, or KLOPR: RF.

Simultaneous approach authorized with Rwy 20L. For uncompensated Baro-VNAV systems, LNAV/VNAV NA below -10°C or above 54°C. Inop table does not apply.

MALSF	MISSED APPROACH: Climb to 1200 then climbing right turn to 4000 direct BEVEE and hold.

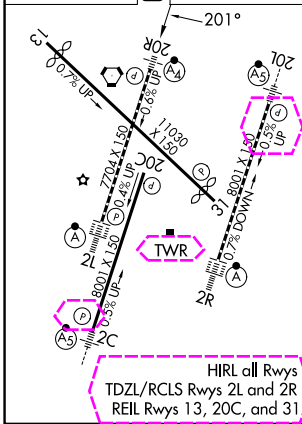
D-ATIS 135.1	NASHVILLE APP CON 118.4 360.7 (030°-196°) 119.35 372.0 (197°-029°)	NASHVILLE TOWER 118.6 257.8	GND CON 121.9 348.6
------------------------	--	---------------------------------------	-------------------------------



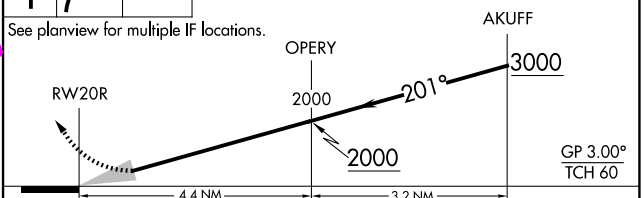
SE-1, 127 NOV 2025 to 25 DEC 2025

SE-1, 27 NOV 2025 to 25 DEC 2025

ELEV 599	D	TDZE 578
----------	----------	----------



1200	4000	BEVEE	VGSI and RNAV glidepath not coincident (VGSI Angle 3.00/TCH 79).
------	------	-------	--



CATEGORY	A	B	C	D
RNP 0.13 DA		927/40	349 (400-¾)	
RNP 0.30 DA		1042/60	464 (500-1¼)	

AUTHORIZATION REQUIRED