


RNAV (RNP) Z RWY 20L

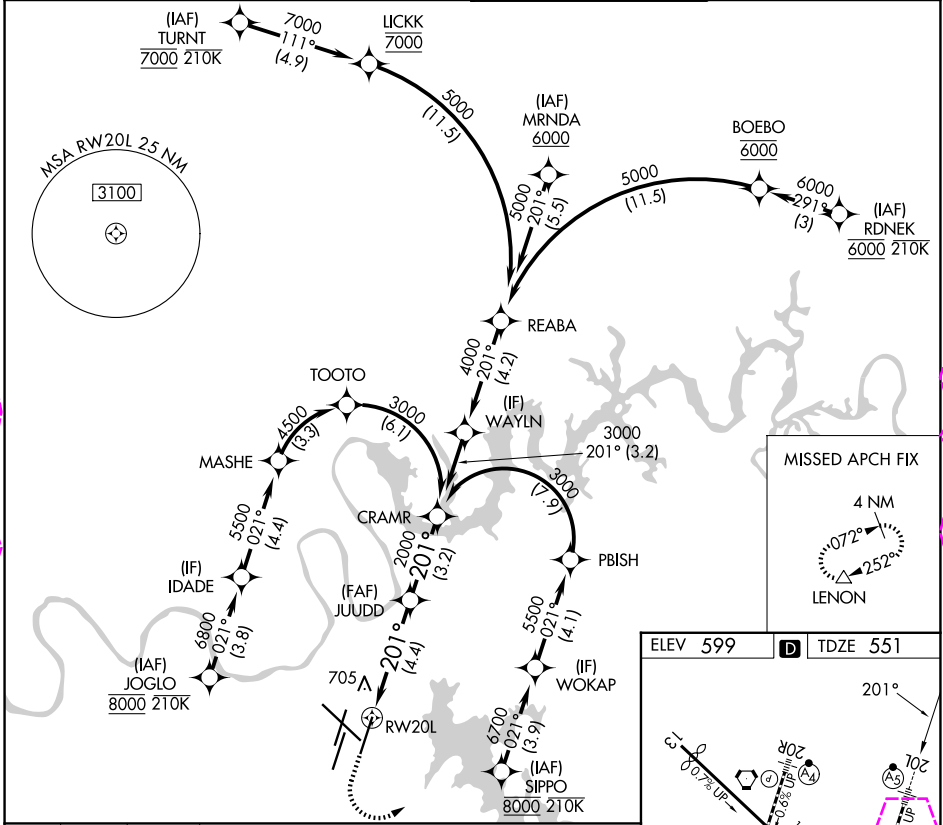
NASHVILLE INTL (BNA)

APP CRS	Rwy Ldg	8000
201°	TDZE	551
	Apt Elev	599

RNP AR APCH - GPS. Authorization required. From RDNEK, TURNT, JOGLO, or SIPPO: RF.
 ▼ For uncompensated Baro-VNAV systems, procedure NA below -10°C or above 54°C.
 Simultaneous approach authorized with Rwy 20R. For inop ALS, increase RNP 0.15 all
 Cats visibility to RVR 4000.

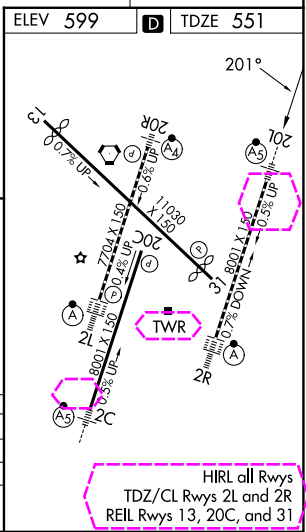
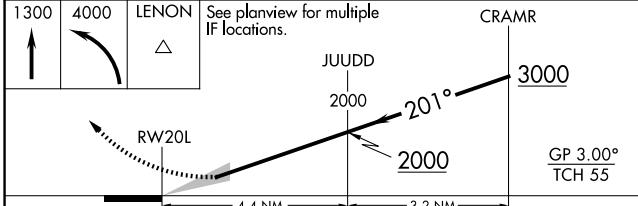
MALSR  MISSED APPROACH: Climb to 1300 then climbing left turn to 4000 direct LENON and hold.




D-ATIS 135.1	NASHVILLE APP CON 118.4 360.7 (030°-196°) 119.35 372.0 (197°-029°)	NASHVILLE TOWER 118.6 257.8	GND CON 121.9 348.6
------------------------	--	---------------------------------------	-------------------------------



SE-1, 30 OCT 2025 to 27 NOV 2025

SE-1, 30 OCT 2025 to 27 NOV 2025



1300	4000	LENON	See planview for multiple IF locations.	CRAMR
				
		JUUDD		3000
		2000		
		RWY 20L		2000
		4.4 NM		3.2 NM
				GP 3.00° TCH 55
CATEGORY	A	B	C	D
RNP 0.15 DA		801/24	250 (300-½)	
RNP 0.30 DA		975/40	424 (400-¾)	


AUTHORIZATION REQUIRED

RNAV (RNP) Z RWY 20L

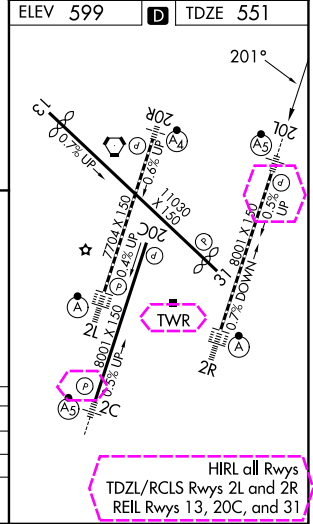
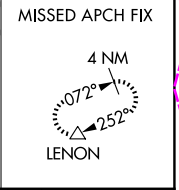
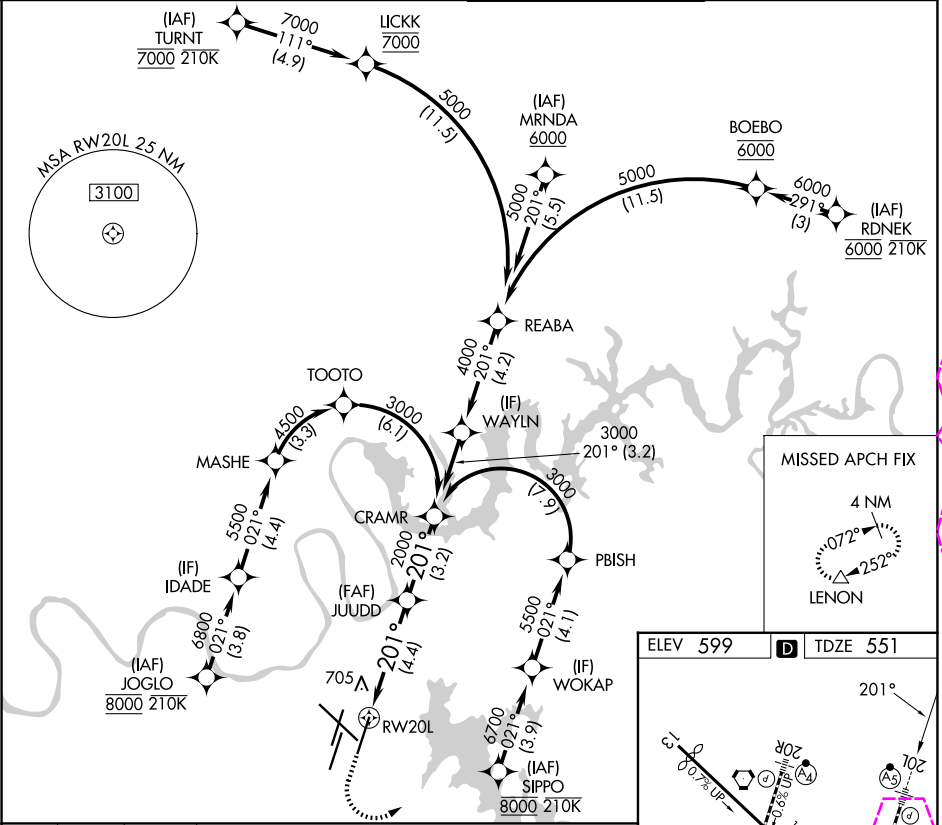
NASHVILLE INTL (BNA)




APP CRS	Rwy Ldg	8000
201°	TDZE	551
	Apt Elev	599

RNP AR APCH - GPS. Authorization required. From RDNEK, TURNT, JOGLO, or SIPPO: RF.
 ▼ For uncompensated Baro-VNAV systems, procedure NA below -10°C or above 54°C.
 Simultaneous approach authorized with Rwy 20R. For inop ALS, increase RNP 0.15 all
 Cats visibility to RVR 4000.

MALSR  MISSED APPROACH: Climb to 1300 then climbing left turn to 4000 direct LENON and hold.

D-ATIS 135.1	NASHVILLE APP CON 118.4 360.7 (030°-196°) 119.35 372.0 (197°-029°)	NASHVILLE TOWER 118.6 257.8	GND CON 121.9 348.6
------------------------	--	---------------------------------------	-------------------------------



1300	4000	LENON	See planview for multiple IF locations.	CRAMR
				
RWY 20L		JUUDD 2000		3000
		201°		GP 3.00°
		4.4 NM		TCH 55
		3.2 NM		
CATEGORY	A	B	C	D
RNP 0.15 DA		801/24	250 (300-½)	
RNP 0.30 DA		975/40	424 (400-¾)	
AUTHORIZATION REQUIRED				

HIRL all Rwys
 TDZL/RCLS Rwys 2L and 2R
 REIL Rwys 13, 20C, and 31

SE-1, 127 NOV 2025 to 25 DEC 2025

SE-1, 27 NOV 2025 to 25 DEC 2025