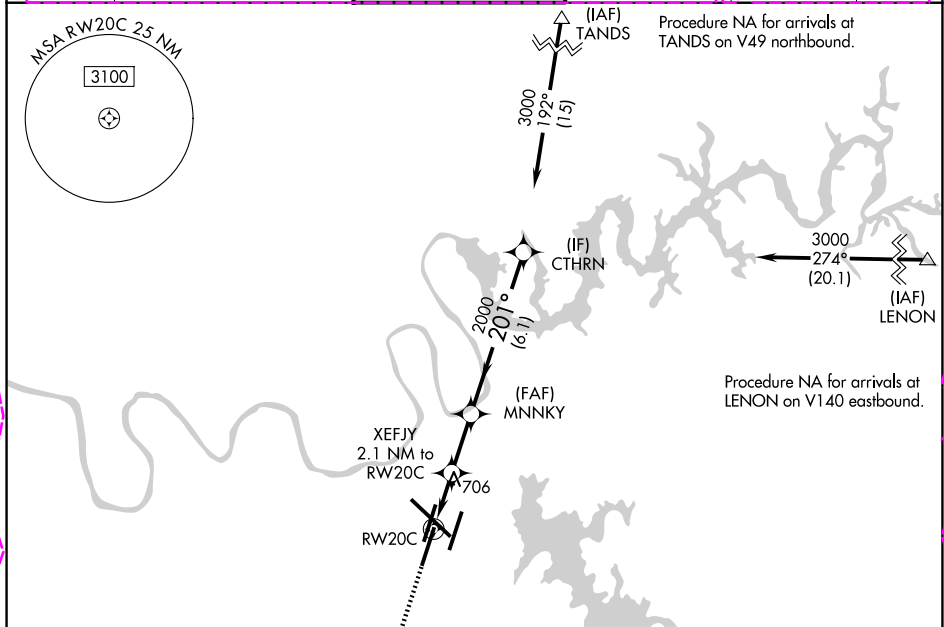


APP CRS 201°	Rwy Ldg TDZE Apt Elev	8001 588 599
------------------------	-----------------------------	-----------------------------------------

RNAV (GPS) RWY 20C

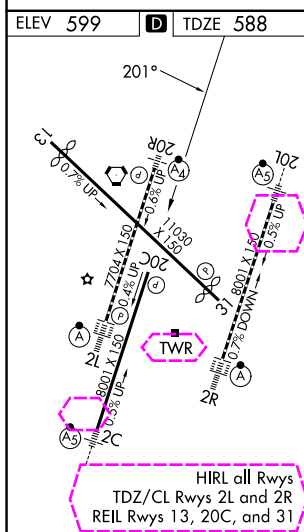
NASHVILLE INTL (BNA)

<p>▼ DME/DME RNP-0.3 NA. Helicopter visibility reduction below $\frac{3}{4}$ SM NA.</p>		<p>MISSED APPROACH: Climb to 3000 direct JASOP and hold.</p>			
D-ATIS 135.1	NASHVILLE APP CON 118.4 360.7 (030°-196°) 119.35 372.0 (197°-029°)	NASHVILLE TOWER 118.6 257.8	GND CON 121.9 348.6	CLNC DEL 126.05	CPDLC



SE-1, 30 OCT 2025 to 27 NOV 2025

SE-1, 30 OCT 2025 to 27 NOV 2025



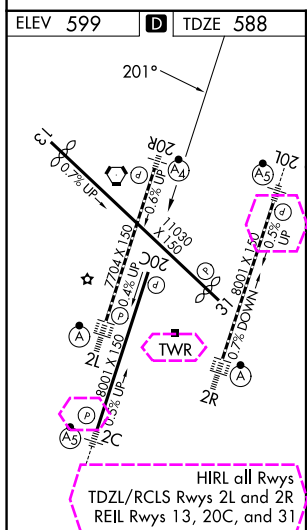
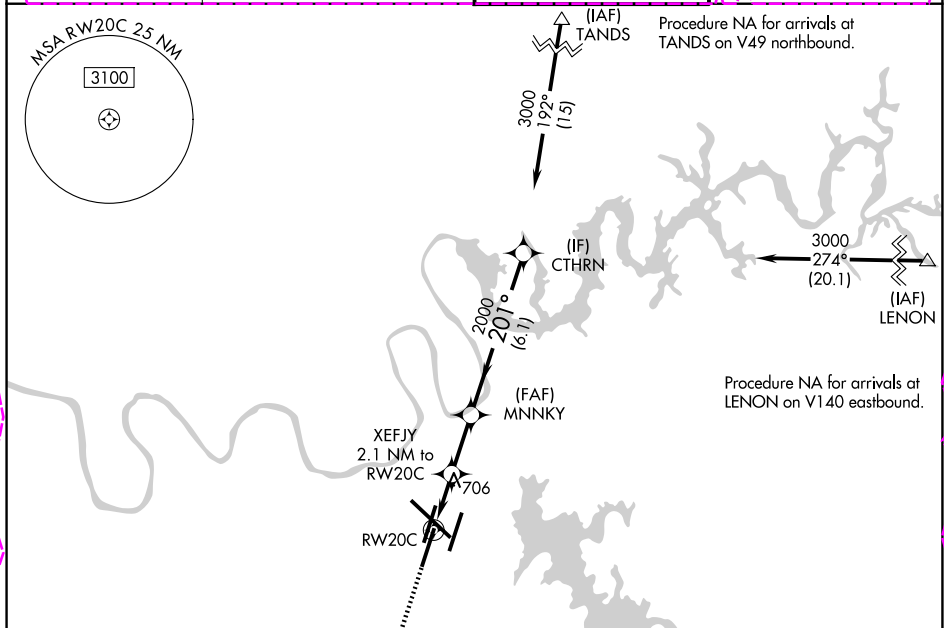
<p>MISSED APCH FIX JASOP</p>	
<p>3000 JASOP</p>	<p>VGSI and descent angles not coincident (VGSI Angle 3.00/TCH 68).</p>
<p>3000 CTHRN</p>	<p>3000</p>
<p>1280</p>	<p>2000</p>
<p>1 NM 1.1 NM 2.2 NM 6.1 NM</p>	
CATEGORY	A B C D
LNAV MDA	960-1 372 (400-1) 960-1 $\frac{1}{8}$ 372 (400-1 $\frac{1}{8}$)
CIRCLING	1100-1 501 (600-1) 1120-1 521 (600-1) 1200-1 $\frac{3}{4}$ 601 (700-1 $\frac{3}{4}$) 1380-2 $\frac{1}{2}$ 781 (800-2 $\frac{1}{2}$)

APP CRS 201°	Rwy Ldg TDZE Apt Elev	8001 588 599
------------------------	-----------------------------	-----------------------------------------

RNAV (GPS) RWY 20C

NASHVILLE INTL (BNA)

▽ ▲	DME/DME RNP-0.3 NA. Helicopter visibility reduction below ¾ SM NA.	MISSED APPROACH: Climb to 3000 direct JASOP and hold.	
D-ATIS 135.1	NASHVILLE APP CON 118.4 360.7 (030°-196°) 119.35 372.0 (197°-029°)	NASHVILLE TOWER 118.6 257.8	GND CON 121.9 348.6



ELEV 599	D	TDZE 588	MISSED APCH FIX JASOP	
3000	JASOP	VGSI and descent angles not coincident (VGSI Angle 3.00/TCH 68).	CTHRN	
1280	XEFJY 2.1 NM to RW20C	MNNKY	3000	
1 NM	1.1 NM	2.2 NM	6.1 NM	
CATEGORY	A	B	C	D
LNAV MDA	960-1	372 (400-1)	960-1½	372 (400-1½)
CIRCLING	1100-1 501 (600-1)	1120-1 521 (600-1)	1200-1¾ 601 (700-1¾)	1380-2½ 781 (800-2½)

SE-1, 127 NOV 2025 to 25 DEC 2025

SE-1, 27 NOV 2025 to 25 DEC 2025