



APP CRS	Rwy Ldg	<b>9487</b>
<b>136°</b>	TDZE	<b>567</b>
	Apt Elev	<b>599</b>

# RNAV (GPS) RWY 13

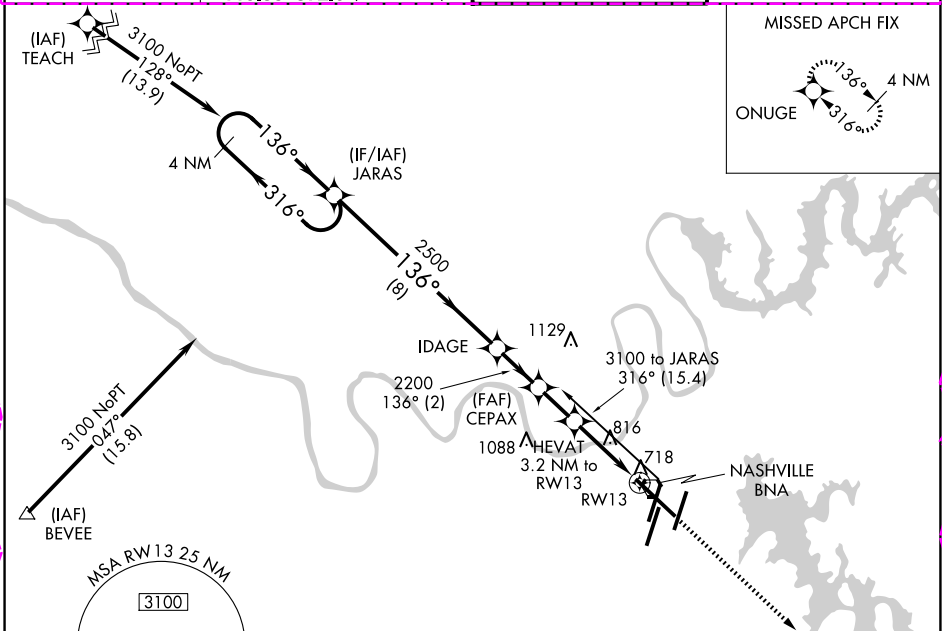
NASHVILLE INTL (BNA)

RNP APCH.

▼ For uncompensated Baro-VNAV systems, LNAV/VNAV  
▲ NA below -16°C or above 47°C.

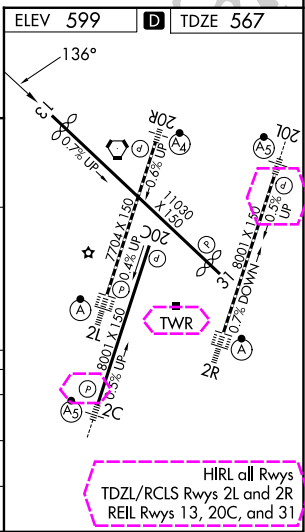
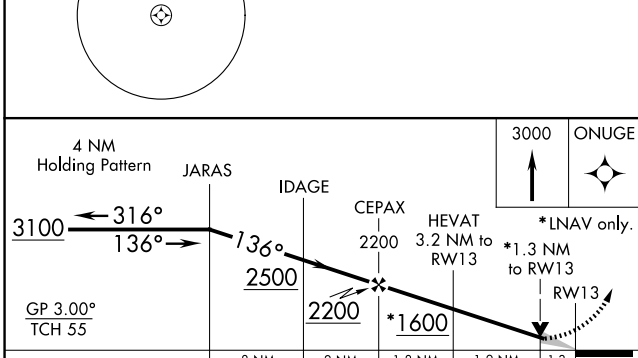
MISSED APPROACH: Climb to 3000 direct ONUGE and hold.

D-ATIS <b>135.1</b>	NASHVILLE APP CON <b>118.4 360.7</b> (030°-196°) <b>119.35 372.0</b> (197°-029°)	NASHVILLE TOWER <b>118.6 257.8</b>	GND CON <b>121.9 348.6</b>
------------------------	--	---------------------------------------	-------------------------------



SE-1, 127 NOV 2025 to 25 DEC 2025

SE-1, 27 NOV 2025 to 25 DEC 2025



CATEGORY	A	B	C	D
LNAV/ VNAV DA	968-1½ 401 (400-1½)			
LNAV MDA	1080-1	513 (500-1)	1080-1½	1080-1¾
CIRCLING	1100-1	1120-1	1200-1¾	1380-2½
	501 (600-1)	521 (600-1)	601 (700-1¾)	781 (800-2½)

HIRL all Rwy's  
TDZL/RCLS Rwy's 2L and 2R  
REL Rwy's 13, 20C, and 31