

(KRSTA3, KRSTA) 23334

AL-282 (FAA)

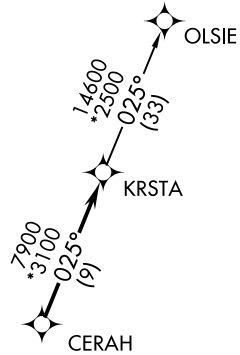
NASHVILLE INTL (BNA)  
NASHVILLE, TENNESSEE

# KRSTA THREE DEPARTURE (RNAV)

**TOP ALTITUDE:  
4000**

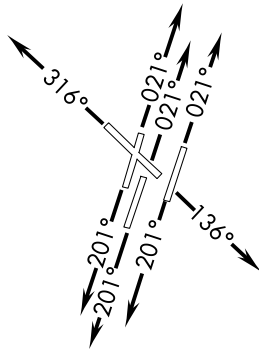
ATIS 135.1  
CLNC DEL 126.05  
CPDLC  
GND CON  
121.9 348.6  
NASHVILLE TOWER  
118.6 257.8  
NASHVILLE DEP CON  
119.35 372.0

- NOTE: DME/DME/IRU or GPS required.
- NOTE: RNAV 1.
- NOTE: Radar required.
- NOTE: For Turbojet aircraft only.
- NOTE: Transponder code will be issued via PDC or Nashville clearance delivery.
- NOTE: If unable to accept climb rates, advise ATC on initial contact.



SE-1, 30 OCT 2025 to 27 NOV 2025

SE-1, 30 OCT 2025 to 27 NOV 2025



### TAKEOFF MINIMUMS:

Rwys 2C, 2L, 2R, 13, 20L, 31:  
Standard with minimum  
climb of 500' per NM to 1100.  
Rwys 20C, 20R: Standard with  
minimum climb of 500' per NM  
to 1300.

NOTE: Chart not to scale.



### DEPARTURE ROUTE DESCRIPTION

TAKEOFF RWYS 2L/C/R: Climb heading 021° or assigned ATC heading, thence....

TAKEOFF RWY 13: Climb heading 136° or assigned ATC heading, thence....

TAKEOFF RWYS 20L/C/R: Climb heading 201° or assigned ATC heading, thence....

TAKEOFF RWY 31: Climb heading 316° or assigned ATC heading, thence....

....expect radar vectors to CERAH, then on track 025° to KRSTA. Maintain 4000.  
Expect clearance to filed altitude within five (5) minutes after departure.

OLSIE TRANSITION (KRSTA3.OLSIE)

# KRSTA THREE DEPARTURE (RNAV)

NASHVILLE, TENNESSEE  
NASHVILLE INTL (BNA)

(KRSTA3, KRSTA) 25JUN15

(KRSTA4, KRSTA) 25331

AL-282 (FAA)

NASHVILLE INTL (BNA)  
NASHVILLE, TENNESSEE

# KRSTA FOUR DEPARTURE (RNAV)

NASHVILLE DEP CON  
119.35 372.0  
D-ATIS 135.1  
CLNC DEL 126.05  
CPDLC  
GND CON  
121.9 348.6  
NASHVILLE TOWER  
118.6 257.8

RNAV 1 - DME/DME/IRU or GPS.

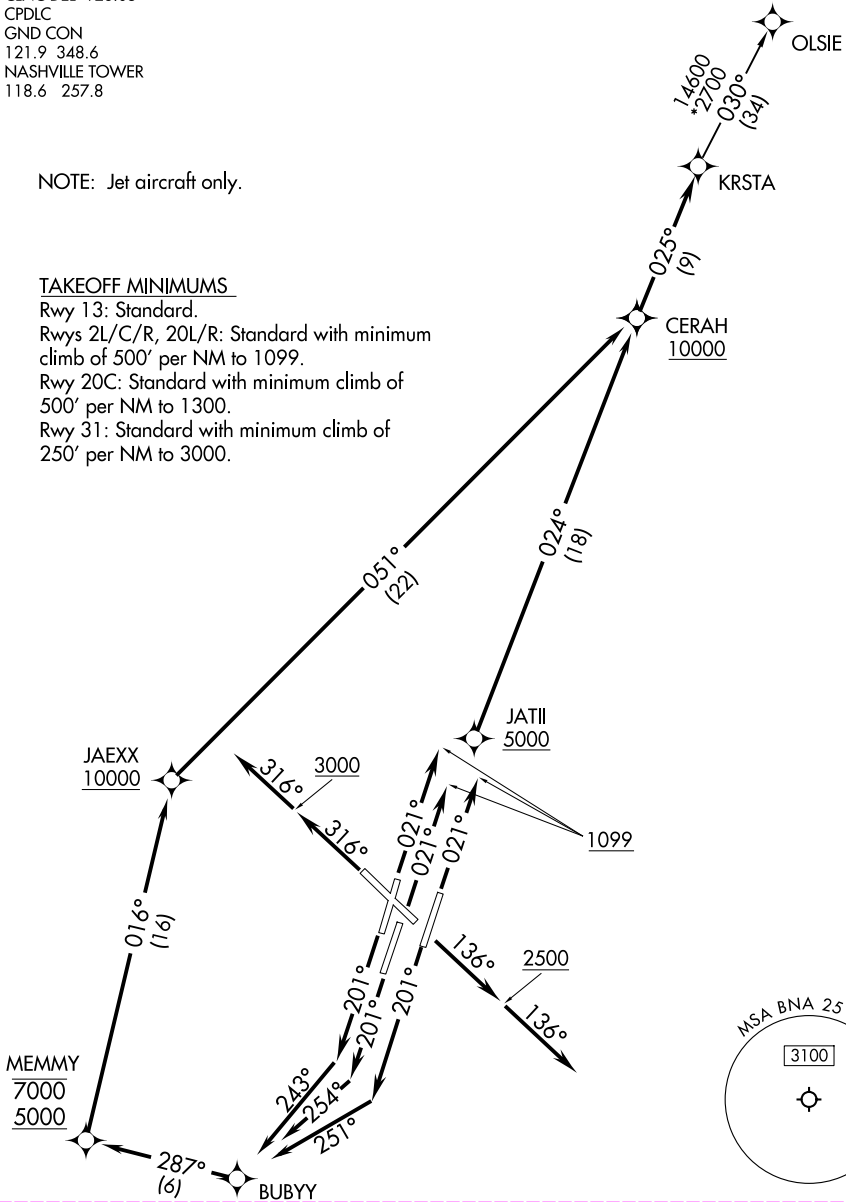
RADAR required.

**TOP ALTITUDE:  
15000**

NOTE: Jet aircraft only.

### TAKEOFF MINIMUMS

Rwy 13: Standard.  
Rwys 2L/C/R, 20L/R: Standard with minimum  
climb of 500' per NM to 1099.  
Rwy 20C: Standard with minimum climb of  
500' per NM to 1300.  
Rwy 31: Standard with minimum climb of  
250' per NM to 3000.



SE-1, 27 NOV 2025 to 25 DEC 2025

SE-1, 27 NOV 2025 to 25 DEC 2025

(CONTINUED ON FOLLOWING PAGE)

NOTE: Chart not to scale.

# KRSTA FOUR DEPARTURE (RNAV)

NASHVILLE, TENNESSEE  
NASHVILLE INTL (BNA)

(KRSTA4, KRSTA) 27NOV25