

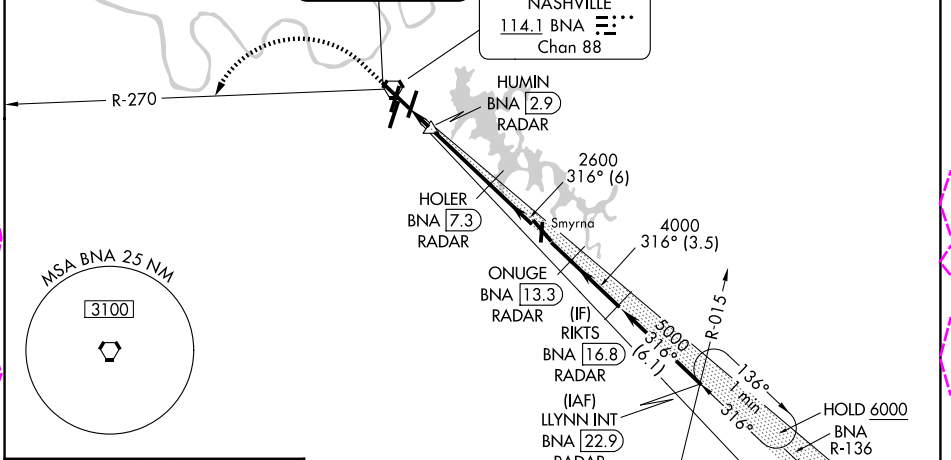
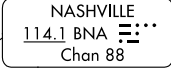
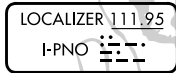
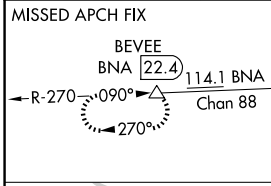
LOC I-PNO 111.95	APP CRS 316°	Rwy Ldg TDZE 9487 578	Apt Elev 599
----------------------------	------------------------	---------------------------------	------------------------

ILS or LOC RWY 31

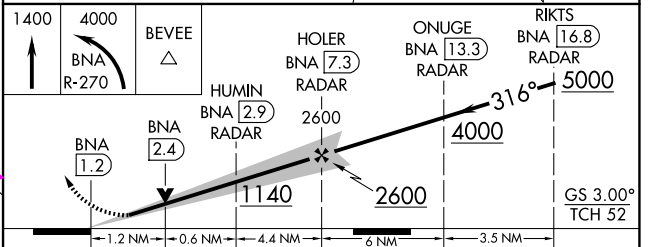
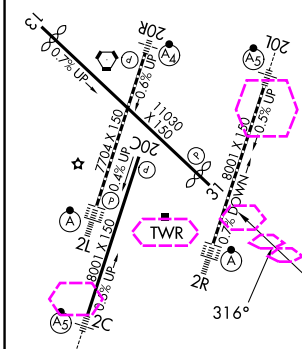
NASHVILLE INTL (BNA)

DME or RADAR required.	MISSED APPROACH: Climb to 1400 then climbing left turn to 4000 on BNA VORTAC R-270 to BEVEE/BNA 22.4 DME and hold.
<p>V DME from BNA VORTAC. DME use requires simultaneous reception of I-PNO and BNA.</p>	

D-ATIS 135.1	NASHVILLE APP CON 118.4 360.7 (030°-196°) 119.35 372.0 (197°-029°)	NASHVILLE TOWER 118.6 257.8	GND CON 121.9 348.6
------------------------	--	---------------------------------------	-------------------------------



ELEV 599	D	TDZE 578
----------	----------	----------



<p>HIRL all Rwys TDZ/CL Rwys 2L and 2R REIL Rwys 13, 20C, and 31 FAF to MAP 6.2 NM</p>				
Category	A	B	C	D
S-ILS 31	778- ³ / ₄ 200 (200- ³ / ₄)			
S-LOC 31	1020-1	442 (500-1)	1020-1 ³ / ₈	442 (500-1 ³ / ₈)
CIRCLING	1100-1 501 (600-1)	1120-1 521 (600-1)	1160-1 ¹ / ₂ 561 (600-1 ¹ / ₂)	1380-2 ¹ / ₂ 781 (800-2 ¹ / ₂)
Knots	60	90	120	150
Min:Sec	6:12	4:08	3:06	2:29

SE-1, 30 OCT 2025 to 27 NOV 2025

SE-1, 30 OCT 2025 to 27 NOV 2025

NASHVILLE, TENNESSEE

AL-282 (FAA)

25331

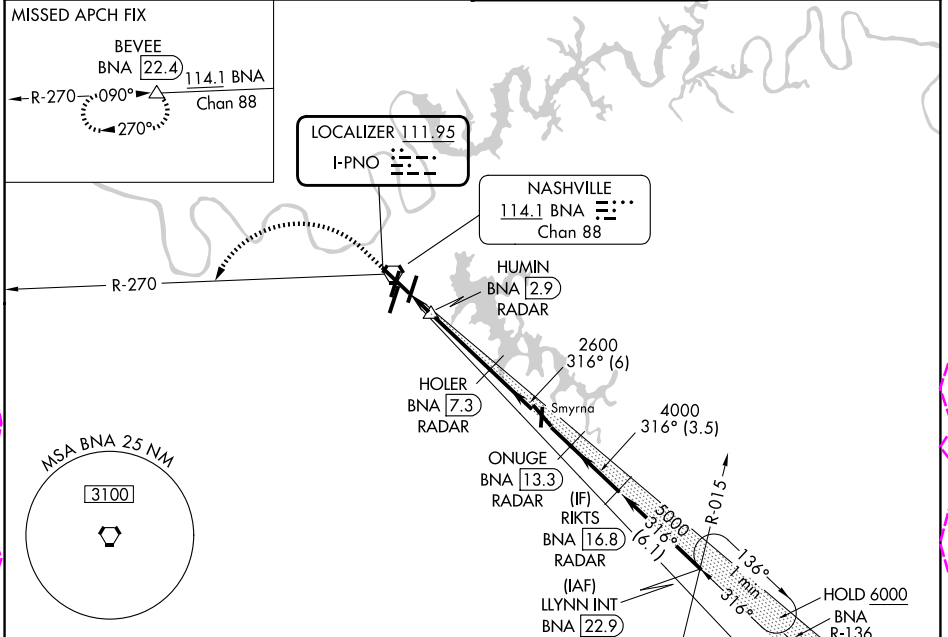
LOC I-PNO 111.95	APP CRS 316°	Rwy Ldg TDZE Apt Elev	9487 578 599
----------------------------	------------------------	-----------------------------	---

ILS or LOC RWY 31

NASHVILLE INTL (BNA)

DME or RADAR required.	MISSED APPROACH: Climb to 1400 then climbing left turn to 4000 on BNA VORTAC R-270 to BEVEE/BNA 22.4 DME and hold.
<p>V DME from BNA VORTAC. DME use requires simultaneous reception of I-PNO and BNA.</p>	

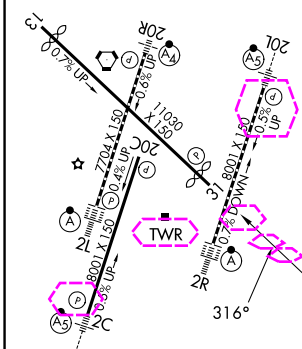
D-ATIS 135.1	NASHVILLE APP CON 118.4 360.7 (030°-196°) 119.35 372.0 (197°-029°)	NASHVILLE TOWER 118.6 257.8	GND CON 121.9 348.6
------------------------	--	---------------------------------------	-------------------------------



SE-1, 127 NOV 2025 to 25 DEC 2025

SE-1, 27 NOV 2025 to 25 DEC 2025

ELEV 599	D	TDZE 578
----------	----------	----------



1400	4000	BEVEE	HOLER BNA 7.3 RADAR	ONUGE BNA 13.3 RADAR	RIKTS BNA 16.8 RADAR
BNA R-270	BNA 2.4	HUMIN BNA 2.9 RADAR	2600	4000	5000
BNA 1.2	BNA 2.4	BNA 2.9	1140	2600	4000
					GS 3.00°
					TCH 52
	1.2 NM	0.6 NM	4.4 NM	6 NM	3.5 NM
CATEGORY	A	B	C	D	

HIRL all Rwys TDZL/RCLS Rwys 2L and 2R REIL Rwys 13, 20C, and 31 FAF to MAP 6.2 NM					
Knots	60	90	120	150	180
Min:Sec	6:12	4:08	3:06	2:29	2:04

S-ILS 31	778-3/4 200 (200-3/4)			
S-LOC 31	1020-1	442 (500-1)	1020-13/8	442 (500-13/8)
CIRCLING	1100-1 501 (600-1)	1120-1 521 (600-1)	1160-11/2 561 (600-1/2)	1380-21/2 781 (800-21/2)

NASHVILLE, TENNESSEE
Amdt 11 02OCT25

36°07'N-86°41'W

NASHVILLE INTL (BNA) ILS or LOC RWY 31