

NASHVILLE, TENNESSEE

AL-282 (FAA)

25275

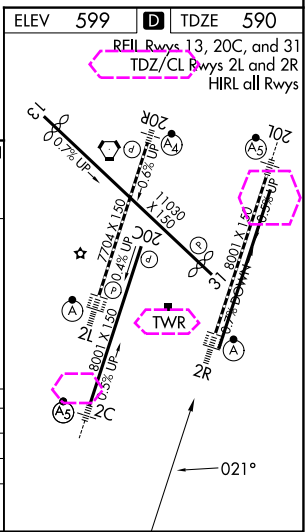
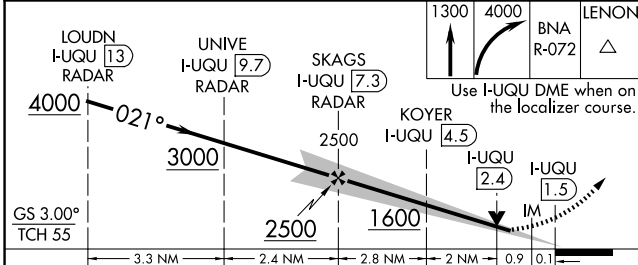
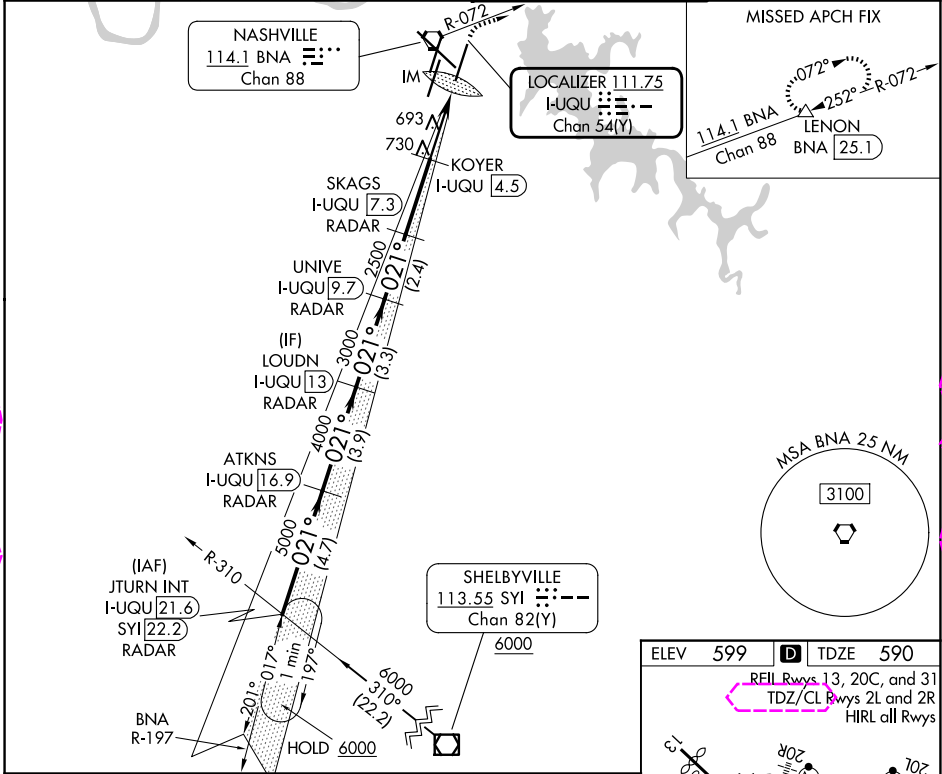
LOC/DME I-UQU 111.75 Chan 54 (Y)	APP CRS 021°	Rwy Ldg TDZE 590 Apt Elev 599
--	------------------------	---

ILS or LOC RWY 2R

NASHVILLE INTL (BNA)

DME required.	ALSf-2	MISSED APPROACH: Climb to 1300, then climbing right turn to 4000 on BNA VORTAC R-072 to LENON/BNA 25.1 DME and hold.
<p>Simultaneous approach authorized.</p> <p>For inop ALS, increase S-LOC 2R Cats C/D visibility to RVR 5500.</p>		

D-ATIS 135.1	NASHVILLE APP CON 118.4 360.7 (030°-196°) 119.35 372.0 (197°-029°)	NASHVILLE TOWER 118.6 257.8	GND CON 121.9 348.6
------------------------	--	---------------------------------------	-------------------------------



CATEGORY	A	B	C	D
S-ILS 2R	790/18 200 (200-½)			
S-LOC 2R	960/24	370 (400-½)	960/35	370 (400-¾)
CIRCLING	1100-1 501 (600-1)	1120-1 521 (600-1)	1200-1¾ 601 (700-1¾)	1380-2½ 781 (800-2½)

NASHVILLE, TENNESSEE
Amdt 9 02OCT25

36°07'N-86°41'W

NASHVILLE INTL (BNA) ILS or LOC RWY 2R

SE-1, 30 OCT 2025 to 27 NOV 2025

SE-1, 30 OCT 2025 to 27 NOV 2025

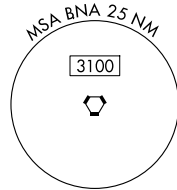
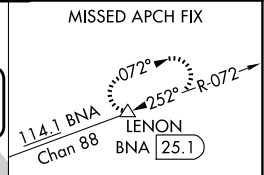
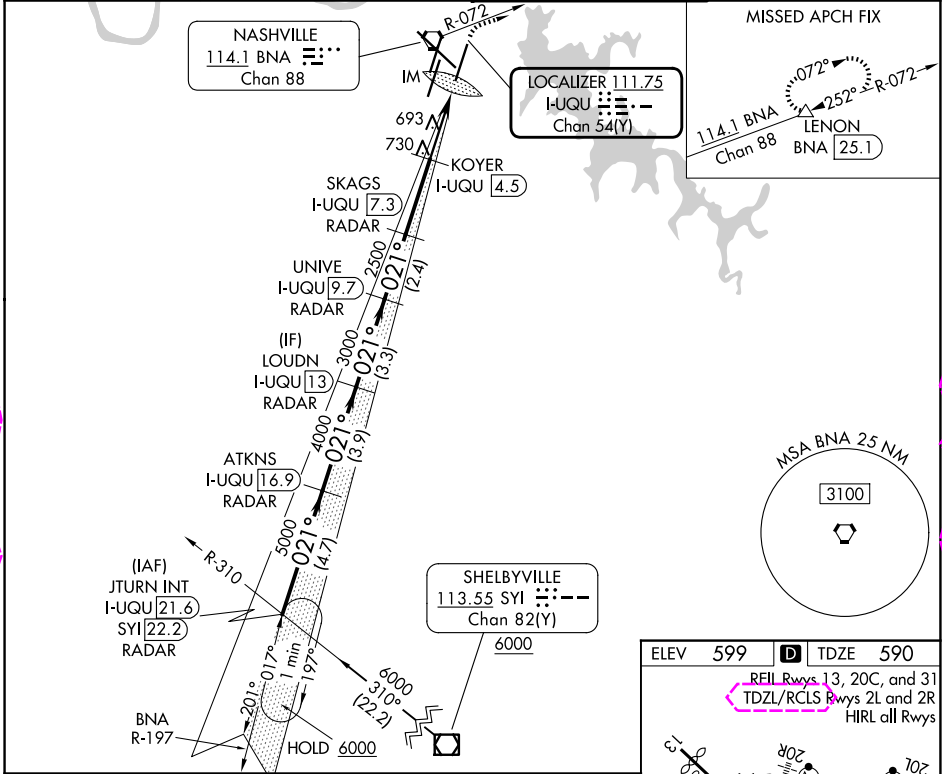
LOC/DME I-UQU 111.75 Chan 54 (Y)	APP CRS 021°	Rwy Ldg TDZE Apt Elev 8000 590 599
--	------------------------	--

ILS or LOC RWY 2R

NASHVILLE INTL (BNA)

DME required.	ALSIF-2	MISSED APPROACH: Climb to 1300, then climbing right turn to 4000 on BNA VORTAC R-072 to LENON/BNA 25.1 DME and hold.
<p>Simultaneous approach authorized.</p> <p>For inop ALS, increase S-LOC 2R Cats C/D visibility to RVR 5500.</p>		

D-ATIS 135.1	NASHVILLE APP CON 118.4 360.7 (030°-196°) 119.35 372.0 (197°-029°)	NASHVILLE TOWER 118.6 257.8	GND CON 121.9 348.6
------------------------	--	---------------------------------------	-------------------------------



SE-1, 127 NOV 2025 to 25 DEC 2025

SE-1, 27 NOV 2025 to 25 DEC 2025

	LOUDN I-UQU 13 RADAR	UNIVE I-UQU 9.7 RADAR	SKAGS I-UQU 7.3 RADAR	KOYER I-UQU 4.5	BNA R-072	LENON
					Use I-UQU DME when on the localizer course.	
GS 3.00° TCH 55	4000	3000	2500	1600	IM	
	3.3 NM	2.4 NM	2.8 NM	2 NM	0.9	0.1
CATEGORY	A	B	C	D		
S-ILS 2R		790/18	200 (200-½)			
S-LOC 2R	960/24	370 (400-½)	960/35	370 (400-¾)		
CIRCLING	1100-1 501 (600-1)	1120-1 521 (600-1)	1200-1¾ 601 (700-1¾)	1380-2½ 781 (800-2½)		

