

NASHVILLE, TENNESSEE

AL-282 (FAA)

25275

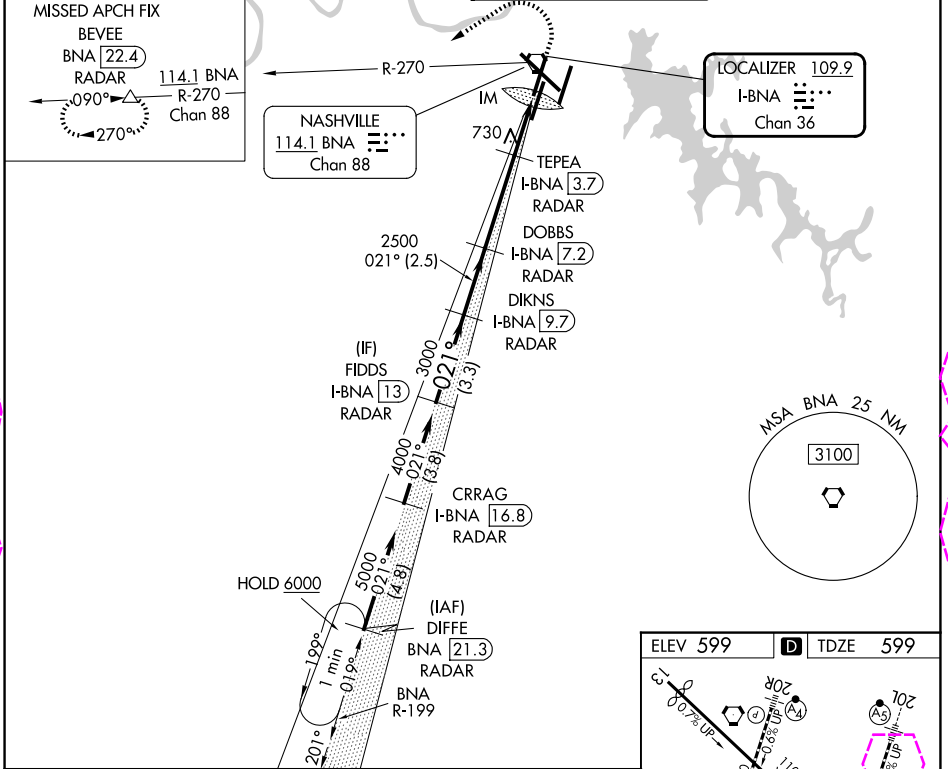
LOC/DME I-BNA 109.9 Chan 36	APP CRS 021°	Rwy Ldg 7702 TDZE 599 Apt Elev 599
---	------------------------	---

ILS or LOC RWY 2L

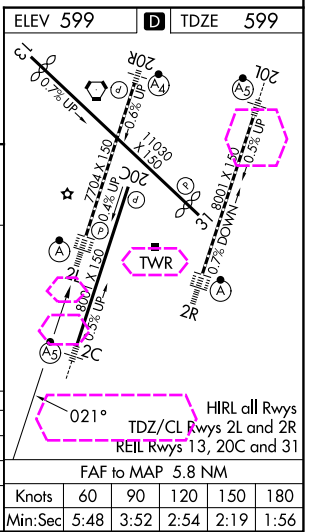
NASHVILLE INTL (BNA)

MISSED or RADAR required. RADAR required for procedure entry.	ALSF-2	MISSED APPROACH: Climb to 1200 then climbing left turn to 4000 on heading 240° and on BNA VORTAC R-270 to BEVEE/BNA VORTAC 22.4 DME/RADAR and hold.
Simultaneous approach authorized.	(A)	

D-ATIS 135.1	NASHVILLE APP CON 118.4 360.7 (030°-196°) 119.35 372.0 (197°-029°)	NASHVILLE TOWER 118.6 257.8	GND CON 121.9 348.6
------------------------	--	---------------------------------------	-------------------------------



	FIDDS I-BNA 13 RADAR	DIKNS I-BNA 9.7 RADAR	DOBBS I-BNA 7.2 RADAR	TEPEA I-BNA 3.7 RADAR	BNA R-270	BEVEE △
	4000	3000	2500	2500	1380	IM
	GS 3.00° TCH 55	021°	021°	021°	hdg 240°	Use I-BNA DME when on the LOC course.
	3.3 NM	2.5 NM	3.5 NM	1.3 NM	0.8	0.2
CATEGORY	A	B	C	D		
S-ILS 2L	799/18 200 (200-½)					
S-LOC 2L	980/24	381 (400-½)	980/35	381 (400-¾)		
CIRCLING	1100-1 501 (600-1)	1120-1 521 (600-1)	1200-1¼ 601 (700-1¾)	1380-2½ 781 (800-2½)		



NASHVILLE, TENNESSEE
Amdt 12 02OCT25

36°07'N-86°41'W

NASHVILLE INTL (BNA)

ILS or LOC RWY 2L

	Knots	60	90	120	150	180
	Min:Sec	5:48	3:52	2:54	2:19	1:56

SE-1, 30 OCT 2025 to 27 NOV 2025

SE-1, 30 OCT 2025 to 27 NOV 2025

NASHVILLE, TENNESSEE

AL-282 (FAA)

25331

LOC/DME I-BNA 109.9 Chan 36	APP CRS 021°	Rwy Ldg 7702
		TDZE 599
		Apt Elev 599

ILS or LOC RWY 2L

NASHVILLE INTL (BNA)

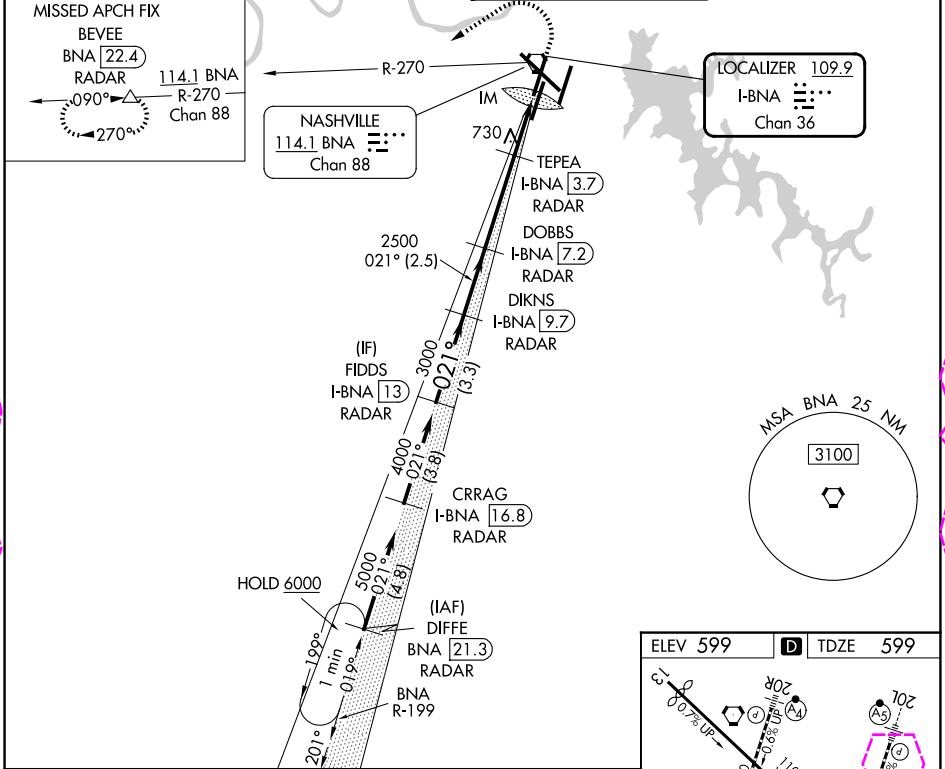
DME or RADAR required. RADAR required for procedure entry.

ALSF-2

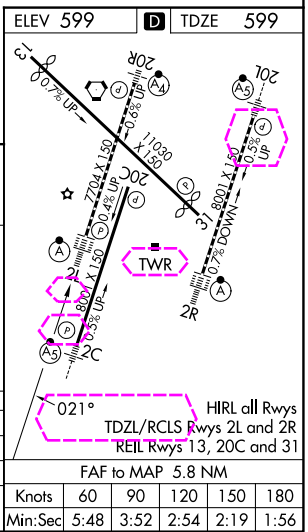
MISSED APPROACH: Climb to 1200 then climbing left turn to 4000 on heading 240° and on BNA VORTAC R-270 to BEVEE/BNA VORTAC 22.4 DME/RADAR and hold.

Simultaneous approach authorized.

D-ATIS 135.1	NASHVILLE APP CON 118.4 360.7 (030°-196°) 119.35 372.0 (197°-029°)	NASHVILLE TOWER 118.6 257.8	GND CON 121.9 348.6
------------------------	--	---------------------------------------	-------------------------------



	FIDDS I-BNA 13 RADAR	DIKNS I-BNA 9.7 RADAR	DOBBS I-BNA 7.2 RADAR	TEPEA I-BNA 3.7 RADAR	BNA R-270	BEVEE
	4000	3000	2500	2500	1380	IM
	021°	021°	021°	021°	021°	021°
	GS 3.00° TCH 55					
	3.3 NM	2.5 NM	3.5 NM	1.3 NM	0.8	0.2
CATEGORY	A	B	C	D		
S-ILS 2L	799/18			200 (200-½)		
S-LOC 2L	980/24	381 (400-½)	980/35	381 (400-¾)		
CIRCLING	1100-1 501 (600-1)	1120-1 521 (600-1)	1200-1¼ 601 (700-1¾)	1380-2½ 781 (800-2½)		



SE-1, 127 NOV 2025 to 25 DEC 2025

SE-1, 27 NOV 2025 to 25 DEC 2025

NASHVILLE, TENNESSEE
Amdt 12 02OCT25

36°07'N-86°41'W

NASHVILLE INTL (BNA)

ILS or LOC RWY 2L