

LOC I-EZN 110.75	APP CRS 021°	Rwy Ldg TDZE Apt Elev	7601 587 599
----------------------------	------------------------	-----------------------------	---

ILS or LOC RWY 2C

NASHVILLE INTL (BNA)

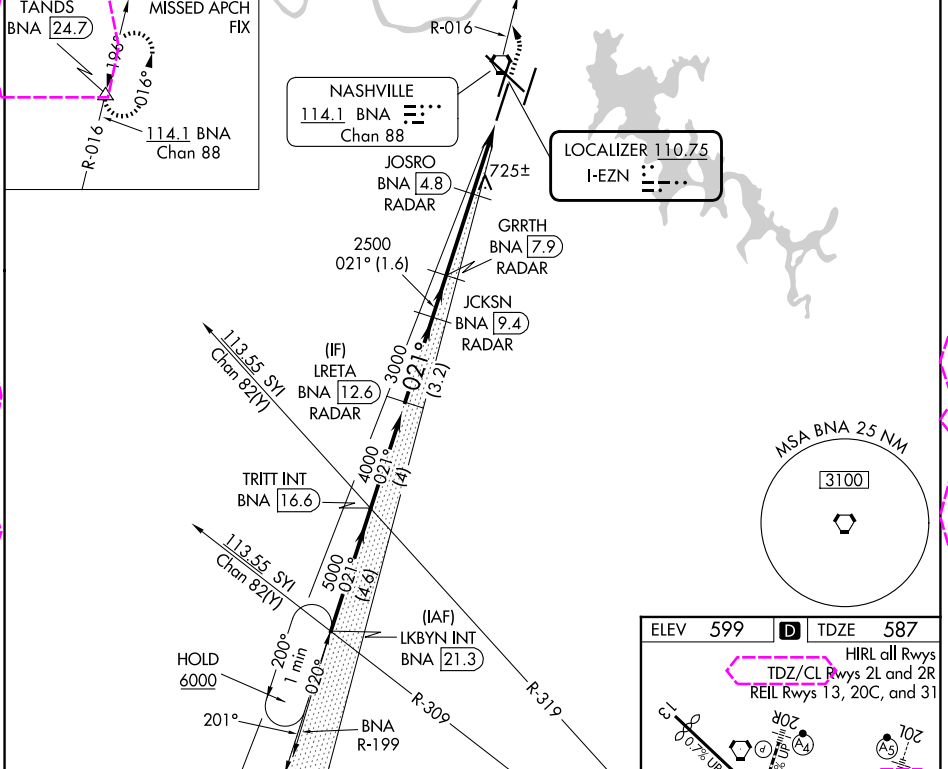
DME or RADAR required.

Simultaneous approach authorized. DME from BNA VORTAC. DME use requires simultaneous reception of I-EZN and BNA. For inop ALS, increase S-LOC 2C Cats C and D visibility to RVR 6000.
*RVR 1800 authorized with use of FD or AP or HUD to DA.

MALSR

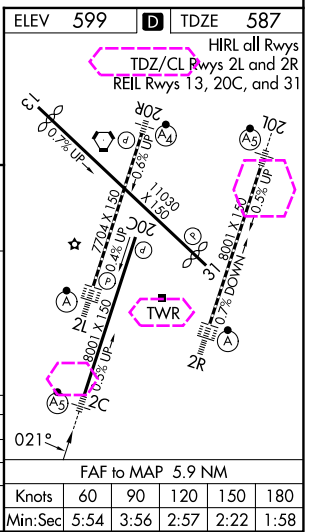
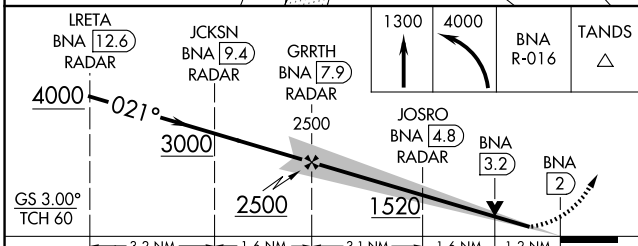
MISSED APPROACH: Climb to 1300 then climbing left turn to 4000 on BNA VORTAC R-016 to TANDS/BNA 24.7 and hold.

D-ATIS 135.1	NASHVILLE APP CON 118.4 360.7 (030°-196°) 119.35 372.0 (197°-029°)	NASHVILLE TOWER 118.6 257.8	GND CON 121.9 348.6
------------------------	--	---------------------------------------	-------------------------------



SE-1, 30 OCT 2025 to 27 NOV 2025

SE-1, 30 OCT 2025 to 27 NOV 2025



LRETA BNA 12.6 RADAR	JCKSN BNA 9.4 RADAR	GRRTH BNA 7.9 RADAR	1300	4000	BNA R-016	TANDS	
4000	021°	3000	2500	1520	JOSRO BNA 4.8 RADAR	BNA 3.2	BNA 2
GS 3.00° TCH 60	3.2 NM	1.6 NM	3.1 NM	1.6 NM	1.2 NM		
CATEGORY	A	B	C	D			
S-ILS 2C *		787/24	200 (200-½)				
S-LOC 2C	980/24	393 (400-½)	980/35	393 (400-¾)			
CIRCLING	1100-1 501 (600-1)	1120-1 521 (600-1)	1160-1½ 561 (600-1½)	1380-2½ 781 (800-2½)			

ELEV	599	TDZE	587		
HIRL all Rws					
TDZ/CL Rws 2L and 2R					
REIL Rws 13, 20C, and 31					
FAF to MAP 5.9 NM					
Knots	60	90	120	150	180
Min:Sec	5:54	3:56	2:57	2:22	1:58

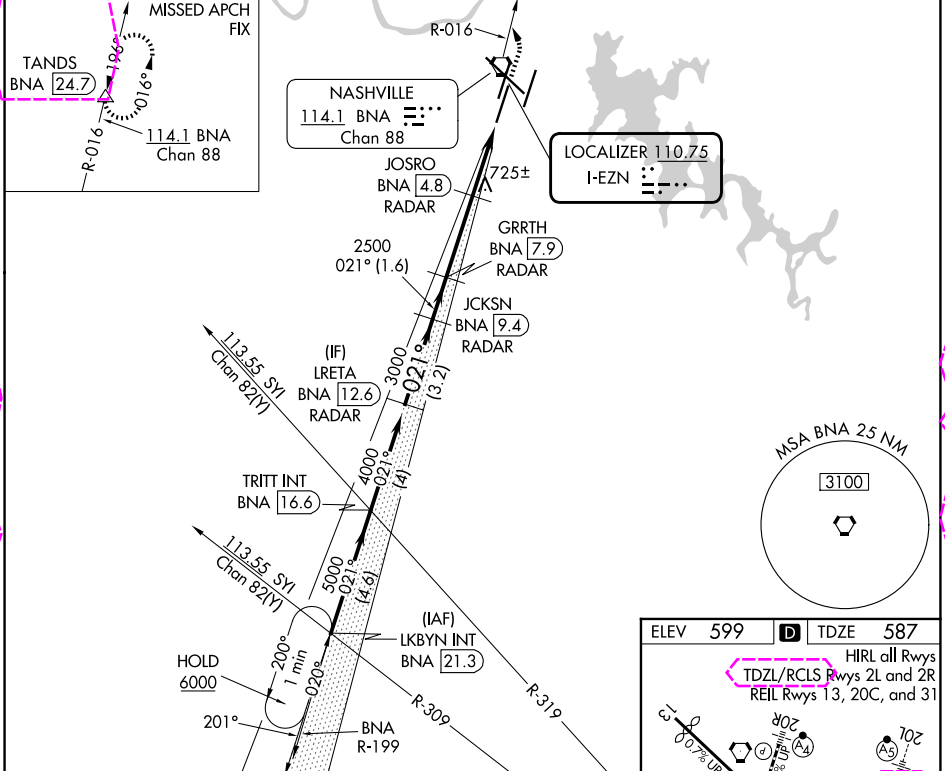
LOC I-EZN 110.75	APP CRS 021°	Rwy Ldg TDZE Apt Elev	7601 587 599
----------------------------	------------------------	-----------------------------	---

ILS or LOC RWY 2C

NASHVILLE INTL (BNA)

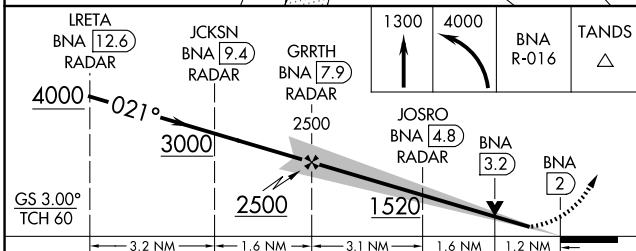
DME or RADAR required.		MALSR 	MISSED APPROACH: Climb to 1300 then climbing left turn to 4000 on BNA VORTAC R-016 to TANDS/BNA 24.7 and hold.
Simultaneous approach authorized. DME from BNA VORTAC. DME use requires simultaneous reception of I-EZN and BNA. For inop ALS, increase S-LOC 2C Cats C and D visibility to RVR 6000. *RVR 1800 authorized with use of FD or AP or HUD to DA.			

D-ATIS 135.1	NASHVILLE APP CON 118.4 360.7 (030°-196°) 119.35 372.0 (197°-029°)	NASHVILLE TOWER 118.6 257.8	GND CON 121.9 348.6
------------------------	--	---------------------------------------	-------------------------------



SE-1, 127 NOV 2025 to 25 DEC 2025

SE-1, 27 NOV 2025 to 25 DEC 2025



ELEV 599	TDZE 587
HIRL all Rwys	
TDZL/RCLS Rws 2L and 2R	
REIL Rws 13, 20C, and 31	
FAF to MAP 5.9 NM	
Knots	60 90 120 150 180
Min:Sec	5:54 3:56 2:57 2:22 1:58

CATEGORY	A	B	C	D
S-ILS 2C *	787/24 200 (200-½)			
S-LOC 2C	980/24	393 (400-½)	980/35	393 (400-¾)
CIRCLING	1100-1 501 (600-1)	1120-1 521 (600-1)	1160-1½ 561 (600-1½)	1380-2½ 781 (800-2½)