

NASHVILLE, TENNESSEE


AL-282 (FAA)

25275

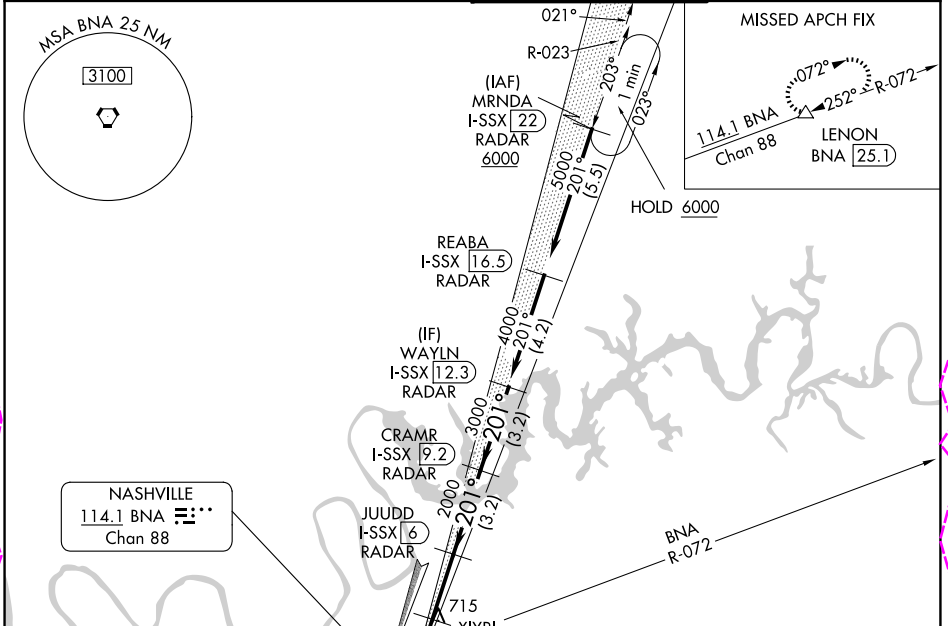
LOC/DME I-SSX 109.35 Chan 30 (Y)	APP CRS 201°	Rwy Ldg 8000 TDZE 551 Apt Elev 599
---	------------------------	---

ILS or LOC RWY 20L

NASHVILLE INTL (BNA)

DME required. RADAR required for procedure entry. ▼ Simultaneous approach authorized. ▲ * RVR 1800 authorized with use of FD or AP or HUD to DA.	MALSR 	MISSED APPROACH: Climb to 1300, then climbing left turn to 4000 on heading 040° and on BNA VORTAC R-072 to LENON/BNA 25.1 DME and hold.
--	--	---

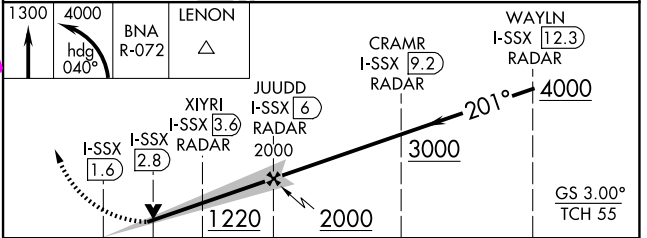
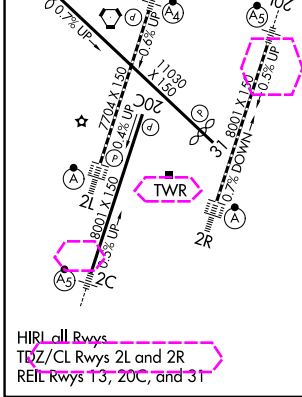
D-ATIS 135.1	NASHVILLE APP CON 118.4 360.7 (030°-196°) 119.35 372.0 (197°-029°)	NASHVILLE TOWER 118.6 257.8	GND CON 121.9 348.6
------------------------	--	---------------------------------------	-------------------------------



SE-1, 30 OCT 2025 to 27 NOV 2025

SE-1, 30 OCT 2025 to 27 NOV 2025

ELEV 599	D	TDZE 551
----------	----------	----------



CATEGORY	A	B	C	D
S-ILS 20L*	751/24 200 (200-½)			
S-LOC 20L	980/24	429 (400-½)	980/40	429 (400-¾)
CIRCLING	1100-1 501 (600-1)	1120-1 521 (600-1)	1200-1¾ 601 (700-1¾)	1380-2½ 781 (800-2½)

NASHVILLE, TENNESSEE
Amdt 7 02OCT25

36°07'N-86°41'W

NASHVILLE INTL (BNA) ILS or LOC RWY 20L

NASHVILLE, TENNESSEE

AL-282 (FAA)

25331

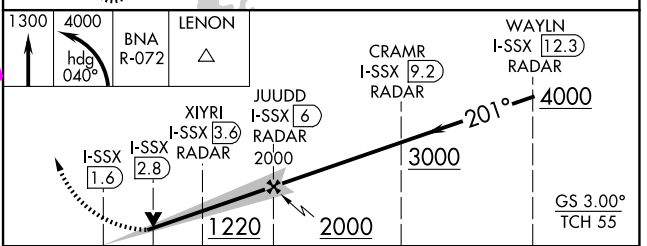
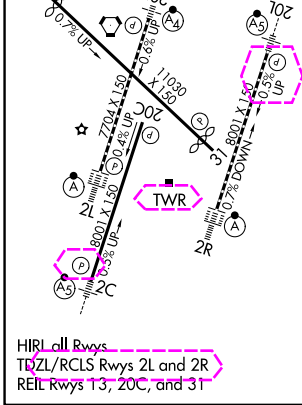
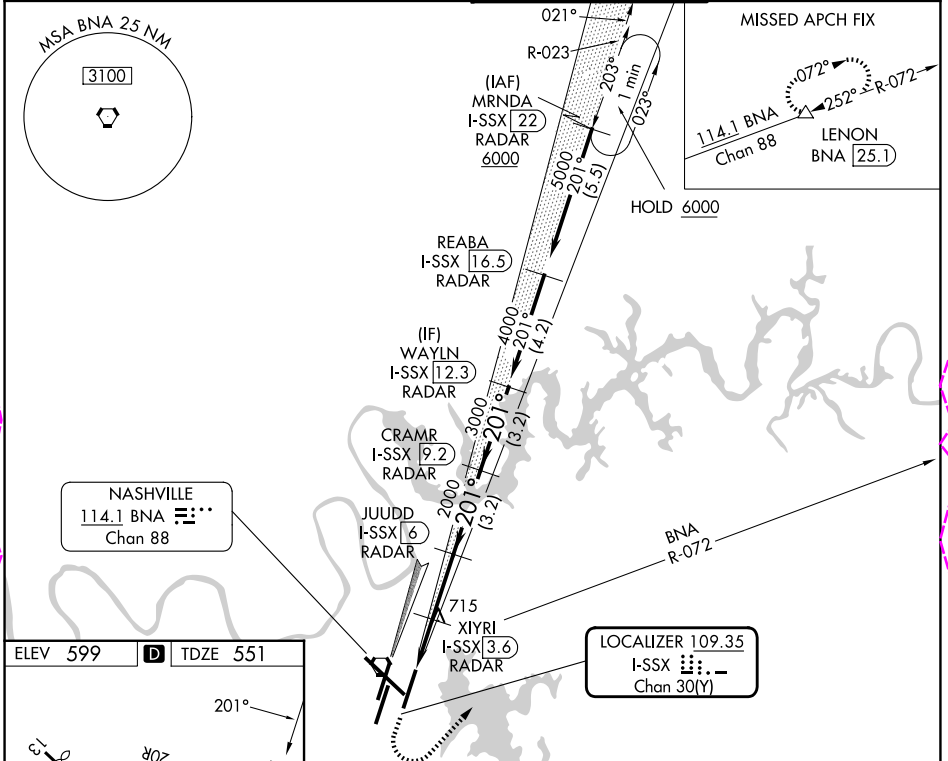
LOC/DME I-SSX 109.35 Chan 30 (Y)	APP CRS 201°	Rwy Ldg 8000 TDZE 551 Apt Elev 599
---	------------------------	---

ILS or LOC RWY 20L

NASHVILLE INTL (BNA)

DME required. RADAR required for procedure entry. ▼ Simultaneous approach authorized. ▲ * RVR 1800 authorized with use of FD or AP or HUD to DA.	MALSR AS	MISSED APPROACH: Climb to 1300, then climbing left turn to 4000 on heading 040° and on BNA VORTAC R-072 to LENON/BNA 25.1 DME and hold.
--	-------------	---

D-ATIS 135.1	NASHVILLE APP CON 118.4 360.7 (030°-196°) 119.35 372.0 (197°-029°)	NASHVILLE TOWER 118.6 257.8	GND CON 121.9 348.6
------------------------	--	---------------------------------------	-------------------------------



CATEGORY	A	B	C	D
S-ILS 20L*	751/24 200 (200-½)			
S-LOC 20L	980/24	429 (400-½)	980/40	429 (400-¾)
CIRCLING	1100-1 501 (600-1)	1120-1 521 (600-1)	1200-1¾ 601 (700-1¾)	1380-2½ 781 (800-2½)

NASHVILLE, TENNESSEE
Amdt 7 02OCT25

36°07'N-86°41'W

NASHVILLE INTL (BNA) ILS or LOC RWY 20L

SE-1, 27 NOV 2025 to 25 DEC 2025

SE-1, 27 NOV 2025 to 25 DEC 2025